



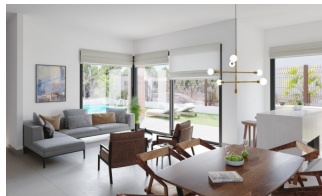
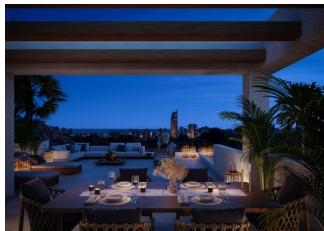
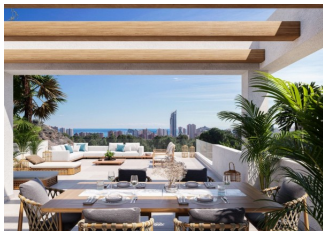
REF: # 11234

FINESTRAT



#### INFO

PRICE:	520.000 €
PROPERTY TYPE:	Villa
CITY:	Finestrat
BEDROOMS:	3
Bathrooms:	2
Build ( m2 ):	136
Plot ( m2 ):	420
Terrace ( m2 ):	-
Year:	-
Floor:	-
Old price	-



#### DESCRIPTION

**NEW BUILD VILLAS IN FINESTRAT** New Build residential of 12 villas in Finestrat, in Sierra Cortina – one of the best urbanizations on Costa Blanca. Villas build over 2 floors, has 3 bedrooms, 2 bathrooms, open plan kitchen with lounge, build-in wardrobes, terrace and solarium, private garden with the pool and 2 parking spaces.. Residential located in the Sierra Cortina resort complex, next to two golf courses, theme parks, a large shopping centre and a few minutes from the beaches of Benidorm. Finestrat located in the Marina Baixa region of the Costa Blanca, close to neighbouring Benidorm and about 40 kilometres from the city of Alicante and the international airport. The village is situated on the mountainside of Puig Campana and offers beautiful views of the mountains, the coast and the Mediterranean Sea.

#### ENERGETIC CERTIFIED



**VIEWS**

- Panoramic views

**GARDEN AND  
TERRACES**

- Private garden







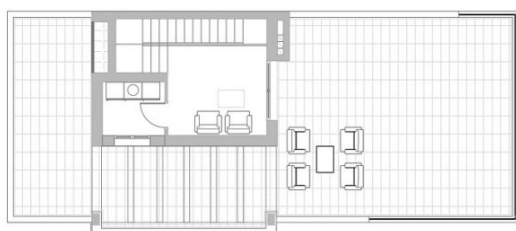












PLANTA PRIMERA.



PLANTA BAJA.



#### Superficies Planta Primera

Superficie Acceso	10,10 m <sup>2</sup>
Superficie Galería	4,05 m <sup>2</sup>
Superficie Instalaciones	0,90 m <sup>2</sup>
Superficie Solarium	90,40 m <sup>2</sup>
Superficie Total Planta Primera	105,45 m <sup>2</sup>

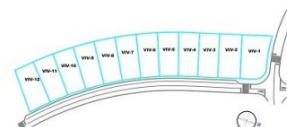
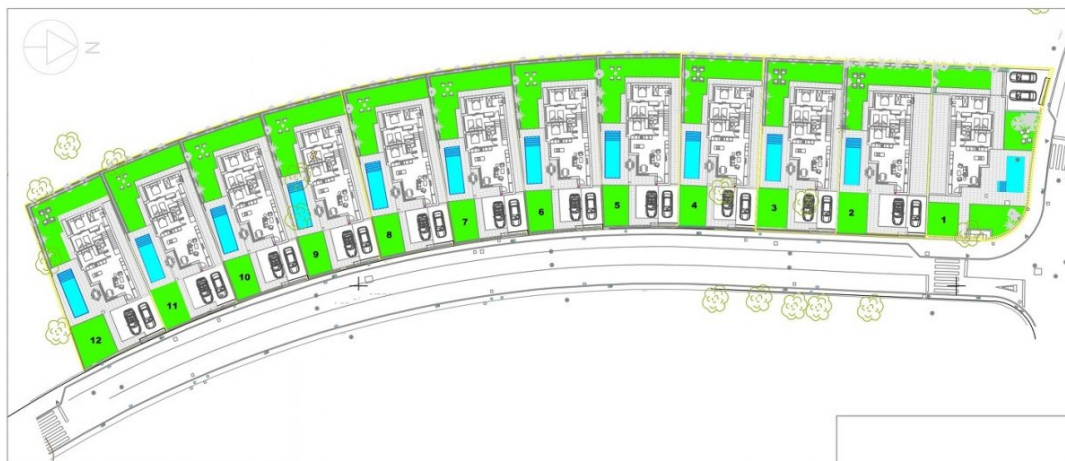
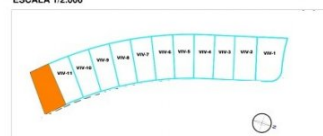
#### Superficies Planta Baja

Superficie Salón Comedor Cocina	35,80 m <sup>2</sup>
Superficie Recibidor	3,30 m <sup>2</sup>
Superficie Pasillo	7,00 m <sup>2</sup>
Superficie Dormitorio 1	9,60 m <sup>2</sup>
Superficie Vestidor	3,65 m <sup>2</sup>
Superficie Baño-1	5,05 m <sup>2</sup>
Superficie Dormitorio 2	10,50 m <sup>2</sup>
Superficie Baño 2	2,70 m <sup>2</sup>
Superficie Dormitorio 3	10,50 m <sup>2</sup>

Superficie Total Planta Baja 88,10 m<sup>2</sup>

Superficie Util Total Viv	103,15 m <sup>2</sup>
Superficie Util Total Viv y Solarium	193,55 m <sup>2</sup>
Superficie Vivienda	147,65 m <sup>2</sup>
Superficie Parcela	420,93 m <sup>2</sup>

#### ESQUEMA ESCALA 1:2.000









***"OUR EXPERIENCE IS YOUR GUARANTEE"***