



REF: # 11176

BENITACHELL



#### INFO

PRICE: 2.065.000 €

PROPERTY TYPE: Villa

CITY: Benitachell

BEDROOMS: 3

Bathrooms: 5

Build ( m2 ): 188

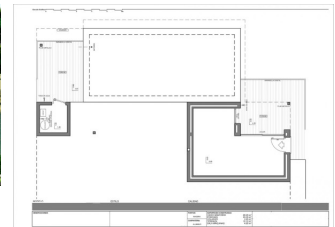
Plot ( m2 ): 847

Terrace ( m2 ): -

Year: -

Floor: -

Old price -



#### DESCRIPTION

NEW BUILD LUXURY VILLA IN CUMBRE DEL SOL To relax and get away from it all, surrounded by incredible sea views; it is possible in this exclusive villa located in the Residential Resort Cumbre del Sol. New Build Luxury villa is distributed over several floors, in open and comfortable spaces, where the interior/exterior limits are crossed and blurred. A project with light colors, wood and lots of natural light from outside. Access to the house is via the upper floor, with a large hall that houses the stairwell and delimits the two modules of the villa. The 3 bedrooms of this villa are located on this floor. In one wing is the master bedroom, spacious and bright, with a private terrace and a spectacular en-suite bathroom. The other wing houses the other two bedrooms, both with en-suite bathrooms and a large terrace. On the ground floor is the day time area, a large open kitchen with an impressive island, with a breakfast bench, open view to the porch, a spectacular summer dining area facing the sea, with barbecue and outdoor bathroom. The living-dining room also has an exquisite porch, which further enhances the idea of "living outside" with several seating areas next to the infinity pool and jacuzzi, to enjoy the wonderful sunny days that the Costa Blanca offers

without losing sight of the Mediterranean Sea. The property continues to surprise us, as there is still a basement of almost 30m<sup>2</sup>, with porch and private terrace, to create a unique space, from an extra bedroom, a work area or whatever it is the new owner desires. Residential Area is situated within the Cumbre del Sol urbanization and, therefore, all the properties within the area also enjoy all the services available within this established urbanization, which has a shopping area with supermarket, hairdresser, chemist, bars and restaurants, the international school Lady Elizabeth School and a extensive range of outdoor sports options with tennis and paddle courts, hiking trails, horse-riding school, not forgetting the Moraig beach with its beach bars and the Cala Llebeig and Cala Los Tiestos coves, of great beauty and charm. Plus all the eateries and leisure options available in the neighbouring towns of Benitachell, Javea (only 7 km away) and Teulada-Moraira (only 4km away), which are all internationally renowned prestigious tourist destinations, and situated half-way between both Alicante and Valencia cities. Alicante airport located 1 hour drive away.



**VIEWS**

- Panoramic views

**GARDEN AND  
TERRACES**

- Private garden

**EXTRA**

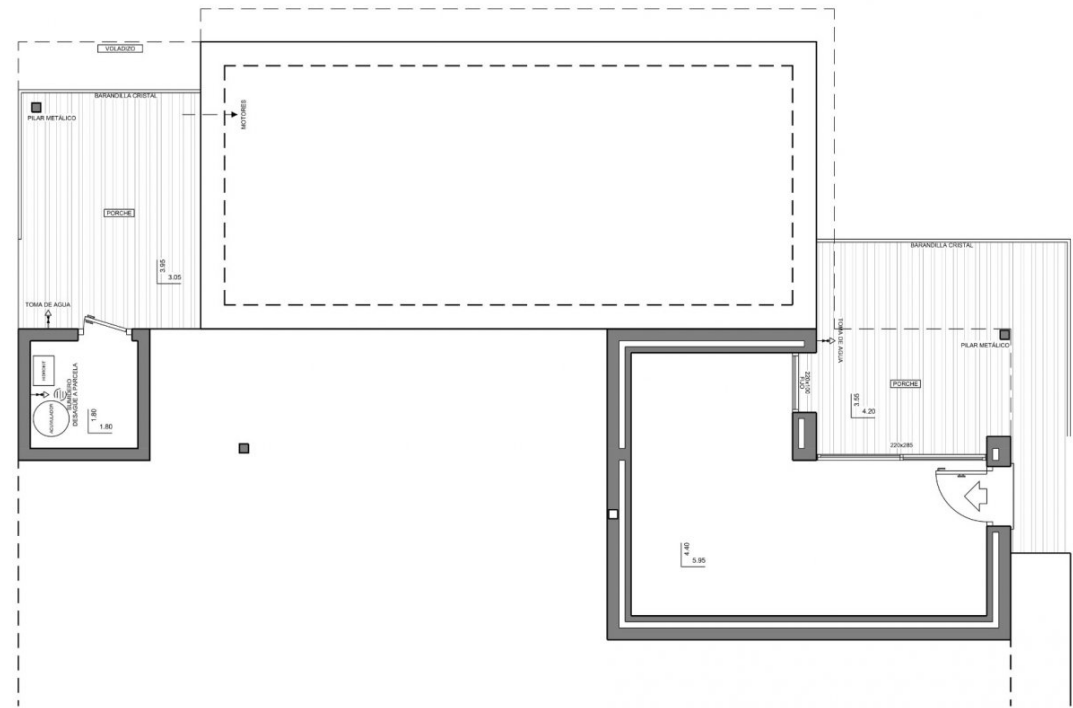
- Outdoor jacuzzi







Escala Gráfica 0 1 2 3 4 5 6 8m



MODELO		ESTILO		CALIDAD	
OBSERVACIONES			PORTON	SUPERFICIES CONSTRUIDAS	
			MADERA	VACIO SANITARIO	29.25 m²
			CARPINTERIA	PORCHES	20.05 m²
				VOLADIZO	2.85 m²
				TERRAZA	10.10 m²
ALUMINIO	SALA MAQUINAS	4.85 m²			

Escala Gráfica 0 1 2 3 4 5 6 8m



MODELO		ESTILO		CALIDAD		
OBSERVACIONES	SUELO INDEMNATE POR AGUA EN TODA LA VIVIENDA.			PORTON	SUPERFICIES CONSTRUIDAS	
				MADERA	VIVIENDA	
				CARPINTERIA	PORCHES	
				ALUMINIO	VOLADIZOS	
				180.00 m <sup>2</sup>		
				40.00 m <sup>2</sup>		
				12.00 m <sup>2</sup>		
				33.00 m <sup>2</sup>		

