



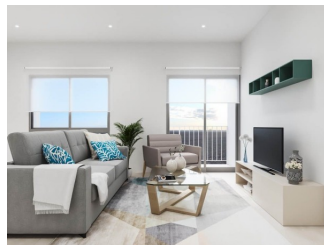
REF: # 11055

COSTA MURCIA (CENTRO)



#### INFO

PRICE:	179.000 €
PROPERTY TYPE:	Apartment
CITY:	Costa Murcia (Centro)
BEDROOMS:	3
Bathrooms:	2
Build ( m2 ):	106
Plot ( m2 ):	-
Terrace ( m2 ):	-
Year:	-
Floor:	-
Old price	-



#### DESCRIPTION

FANTASTIC NEW BUILD APARTMENT IN TORRE-PACHECO, MURCIA - with communal pool. This 106m2 ground floor apartment consists of 3 bedrooms, 2 bathrooms, open kitchen / dining area, private solarium, storage room and underground parking. The complex is built over 3 floors and has a lovely communal pool, located only minutes away are supermarkets, pharmacies, banks, schools, bars, restaurants and the beach. Torre Pacheco is a large town set just off the AP7 heading south and is an inland setting. It is only 5 minutes from San Javier Airport (Murcia) and about 70 minutes from Alicante Airport. The train station connects the town to Cartagena and Murcia where you can spend the day exploring and enjoying the lovely roman architecture and the influence of the Moors who governed these cities many years ago. The trains go to Madrid daily from here. The golf courses of La Serena, Roda, Mar Menor and La Torre are nearby and are in top condition. The street market is held on Saturday mornings and is a large market selling everything from vegetables and fruit, to shoes and clothing to toys and

gizmos and gadgets. The AP-7 highway also gives you easy access to other regions nearby such as Pilar de la Horadada, San Pedro del Pinatar, Orihuela Costa, Torrevieja, Alicante, etc.



<b>STYLE</b> <ul style="list-style-type: none"><li>• Modern</li></ul>	<b>VIEWS</b> <ul style="list-style-type: none"><li>• Panoramic views</li></ul>	<b>AIRCONDITIONING</b> <ul style="list-style-type: none"><li>• Central airconditioning</li></ul>	<b>DISTANCE TO :</b> <div>Beach : 9 Km</div> <div>Airport: 20 Km</div>
<b>FURNITURE</b> <ul style="list-style-type: none"><li>• Not furnished</li></ul>	<b>PARKING</b> <div>Garage no Cars : 1</div>	<b>FLOORING</b> <ul style="list-style-type: none"><li>• Tile floors</li><li>• Stone floors</li></ul>	<b>KITCHEN</b> <ul style="list-style-type: none"><li>• Open kitchen</li></ul>
<b>GARDEN AND TERRACES</b> <ul style="list-style-type: none"><li>• Open terrace</li></ul>	<b>EXTRA</b> <ul style="list-style-type: none"><li>• Built in wardrobes</li><li>• Reinforced door</li><li>• Double glazed windows</li><li>• Storage room</li></ul>		



## PROPERTY GALLERY



















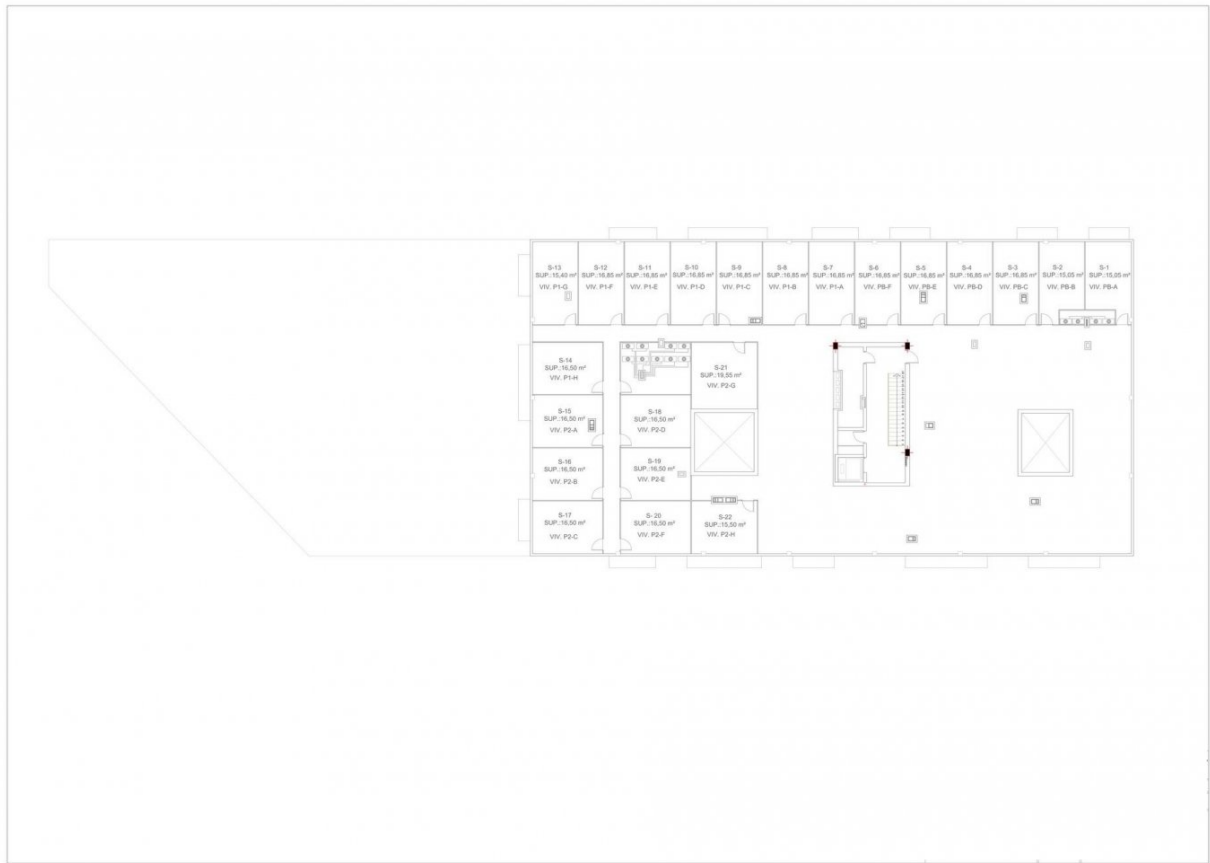
#### SUPERFICIES ÚTILES

SALÓN-COMEDOR	24,50 m <sup>2</sup>
COCINA	8,60 m <sup>2</sup>
LAVADERO	2,70 m <sup>2</sup>
HABITACIÓN 1	13,40 m <sup>2</sup>
HABITACIÓN 2	10,00 m <sup>2</sup>
HABITACIÓN 3	10,00 m <sup>2</sup>
BAÑO 1	5,13 m <sup>2</sup>
BAÑO 2	4,60 m <sup>2</sup>
PASILLO	9,95 m <sup>2</sup>

Superficie construida: 101,30 m<sup>2</sup>

VIVIENDA PLANTA BAJA. MODELO 03











**"OUR EXPERIENCE IS YOUR GUARANTEE"**