



REF: # 11046

QUESADA-ROJALES (LA FINCA GOLF)



#### INFO

**PRICE:** 729.000 €

**PROPERTY TYPE:** Villa

**CITY:** Quesada-Rojales (La Finca Golf)

**BEDROOMS:** 4

**Bathrooms:** 3

**Build ( m2 ):** 237

**Plot ( m2 ):** 334

**Terrace ( m2 ):** -

**Year:** -

**Floor:** -

**Old price** -



#### DESCRIPTION

**MODERN DESIGN VILLA WITH GOLF VIEWS** Designer villa in one of the most exclusive locations on the Costa Blanca. With spectacular views over the Finca Golf Resort, this modern house with Mediterranean touches of 4 bedrooms and 3 bathrooms, takes you to a privileged corner where you can enjoy the good climate in its more than 150 square metres and its basement of more than 80m2. It stands out for the use of the best qualities as well as a large garden that allows us to enjoy absolute privacy and a dreamlike private swimming pool that will make every moment an unforgettable memory. Located on the La Finca golf course in Algorfa, 20 minutes from the wonderful beaches of Guardamar.

#### ENERGETIC CERTIFIED



**VIEWS**

- Panoramic views

**GARDEN AND  
TERRACES**

- Open terrace































NÚMERO/NUMBER: 2117 a 2126

**PLANTA PRIMERA/FIRST FLOOR**  
SUP. ÚTILES / USEFUL SURFACE

DORMITORIO 2/BEDROOM 2	19.00 M2
BÑO 2/BATH 2	4.30 M2
DORMITORIO 3/BEDROOM 3	9.50 M2
DORMITORIO 4/BEDROOM 4	13.20 M2
BÑO 3/BATH 3	4.20 M2
PASILLO/CORRIDOR	7.20 M2
ESCALERA/STAIRS	6.40 M2
TERRAZA/TERRACE	19.80 M2

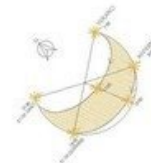
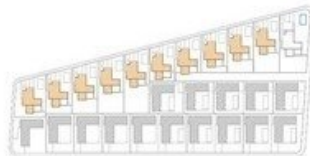
BUILT AREA: 155.70 M2  
BASEMENT AREA: 82.90 M2

TERRACE AREA: 59.00 M2  
POOL AREA: 32.00 M2

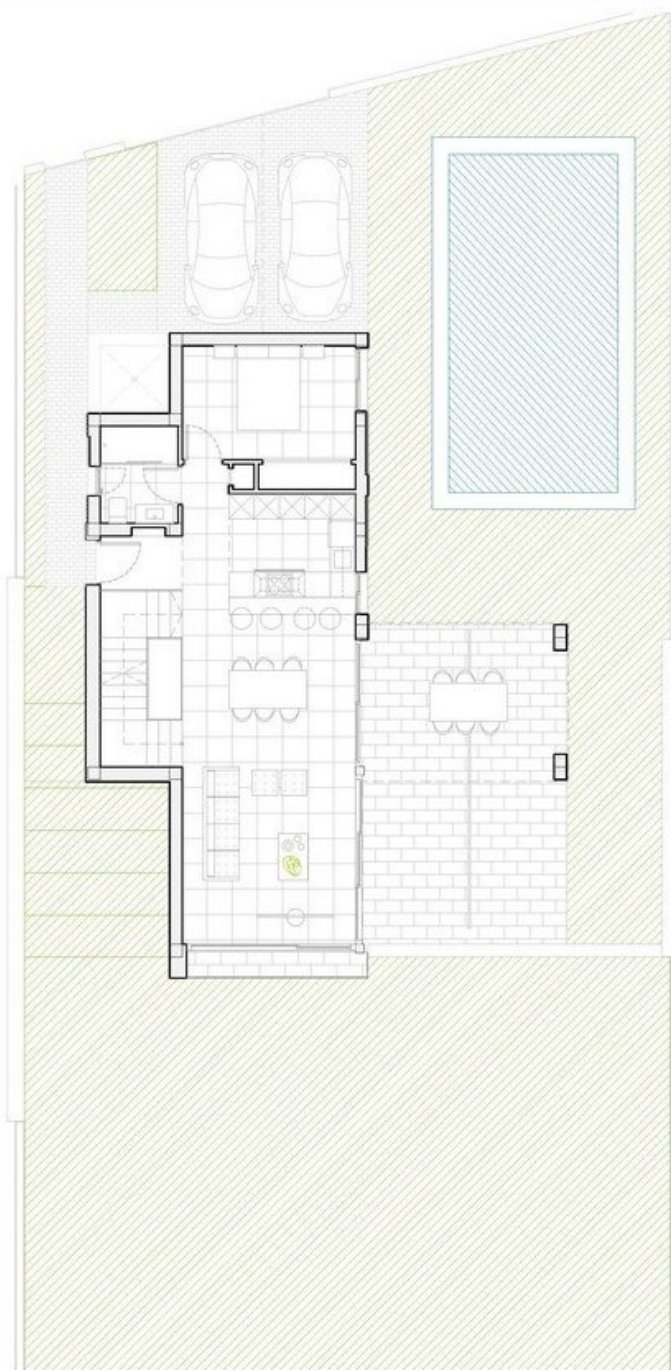
ENTRANCE: 10.00 M2  
PARKING: 28.00 M2

BEDROOMS: 4  
BATHROOMS: 3

SOLEAMIENTO/SUNCALC



ESCALA / SCALE 1:100 (A3)



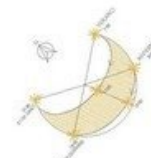
NÚMERO/NUMBER: 2117 a 2126

**PLANTA BAJA/GROUND FLOOR**  
SUP. ÚTILES / USEFUL SURFACE

S/C/D/R/K	43,70 M2
DORMITORIO 1/BEDROOM 1	12,60 M2
BAÑO 1/BATH 1	4,20 M2
PASILLO/CORRIDOR	0,80 M2
ACCESO/HALL	2,50 M2
ESCALERA/STAIRS	6,40 M2
TERRAZA/TERRACE	39,20M2

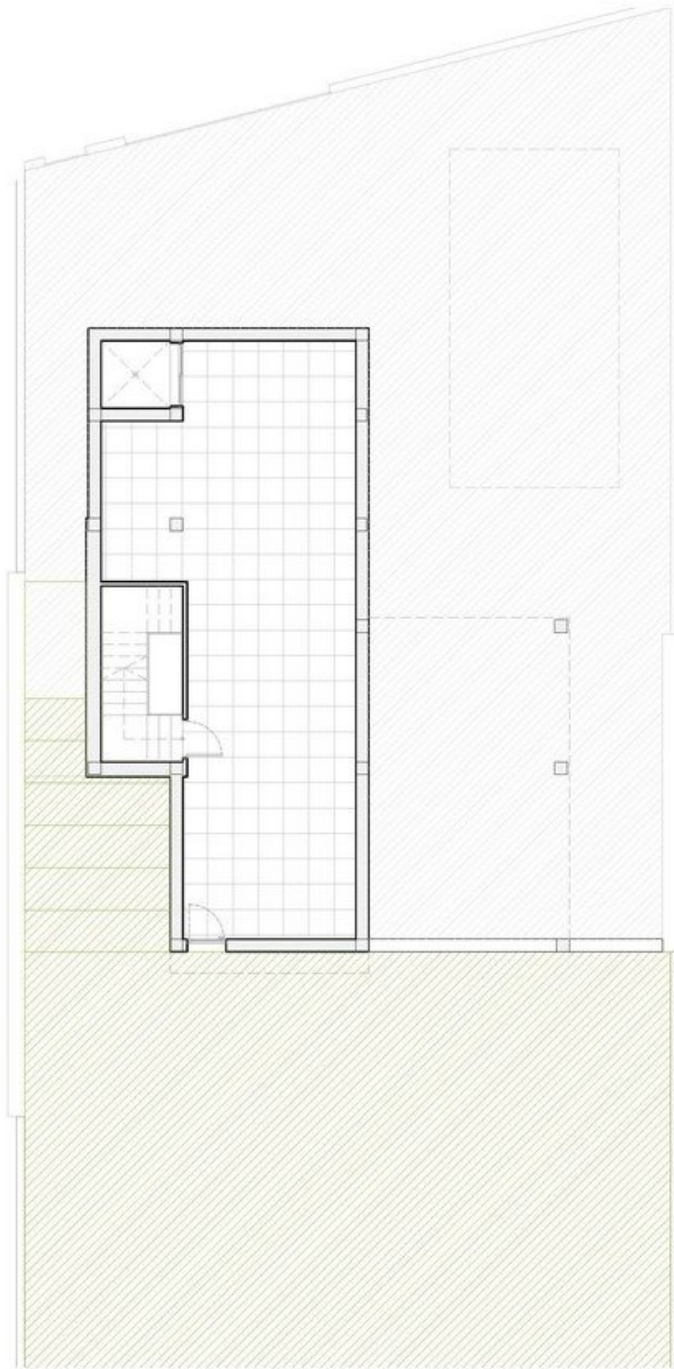
BUILT AREA: 155,70 M2 TERRACE AREA: 59,00 M2 ENTRANCE: 10,00 M2 BEDROOMS: 4  
BASEMENT AREA: 82,90 M2 POOL AREA: 32,00 M2 PARKING: 28,00 M2 BATHROOMS: 3

SOLEAMIENTO/SUNCALC



ESCALA / SCALE 1:100 (A3)

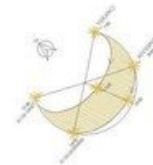




NÚMERO/NUMBER: 2117 a 2126

PLANTA SÓTANO/BASEMENT FLOOR  
SUP. ÚTILES / USEFUL SURFACE

BUILT AREA: 155,70 M2 TERRACE AREA: 59,00 M2 ENTRANCE: 10,00 M2 BEDROOMS: 4  
BASEMENT AREA: 82,90 M2 POOL AREA: 32,00 M2 PARKING: 28,00 M2 BATHROOMS: 3 SOLEAMIENTO / SUNCALC



ESCALA / SCALE 1:100 (A3)

**"OUR EXPERIENCE IS YOUR GUARANTEE"**