



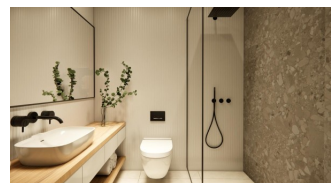
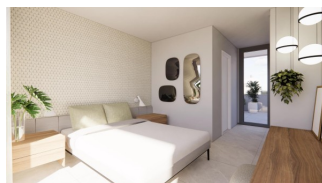
REF: # 10986

TORRE PACHECO (SANTA ROSALIA LAKE AND LIFE RESORT)



#### INFO

PRICE:	629.900 €
PROPERTY TYPE:	Villa
CITY:	Torre Pacheco (Santa Rosalia Lake and Life Resort)
BEDROOMS:	3
Bathrooms:	3
Build ( m2 ):	218
Plot ( m2 ):	208
Terrace ( m2 ):	84
Year:	-
Floor:	-
Old price	-



#### DESCRIPTION

NEW BUILD VILLAS IN PRIVATE GATED RESORT IN PROVINCE OF MURCIA New Build villas in private gated resort in the Murcia region, surrounded by excellent golf courses and just 10 minutes from the sandy beaches of the Mar Menor Sea. Villas build over of 2 floors and has 3 bedrooms, 3 bathrooms, open plan kitchen and living-dining room, fitted wardrobes, private garden with the pool, parking and include an open-plan finished basement. Located in a private gated resort, with a main access entrance and 24 hours security. The resort is designed around an impressive 126.000 m2 green area. It comprises walking and cycling paths, sport facilities, paddle and tennis courts, a mini-golf course, gardens, dog parks, leisure areas, clubhouse.... Also in the central area is the jewel of the resort, a crystal-clear artificial lake of almost 17.000m2 of water surface, surrounded by white sandy beaches and palm trees, bringing a piece of the Caribbean to the Murcia Region. There are 2 islands in the lake, one of them has its own bar, there are also "beach

Chiringuitos” spread around the lake.



**VIEWS**

- Panoramic views

**GARDEN AND  
TERRACES**

- Open terrace
- Private garden

**EXTRA**

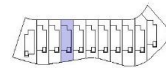
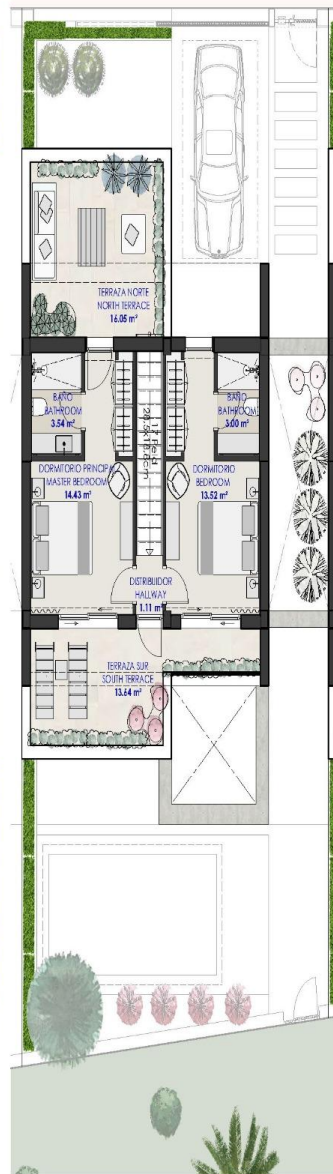
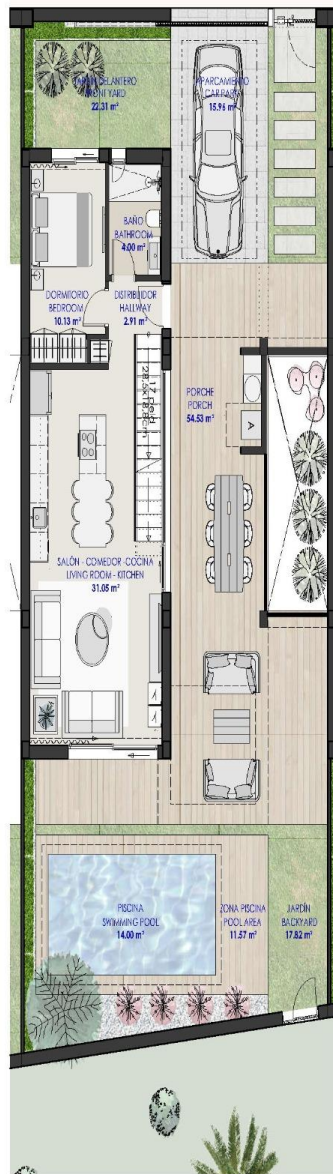
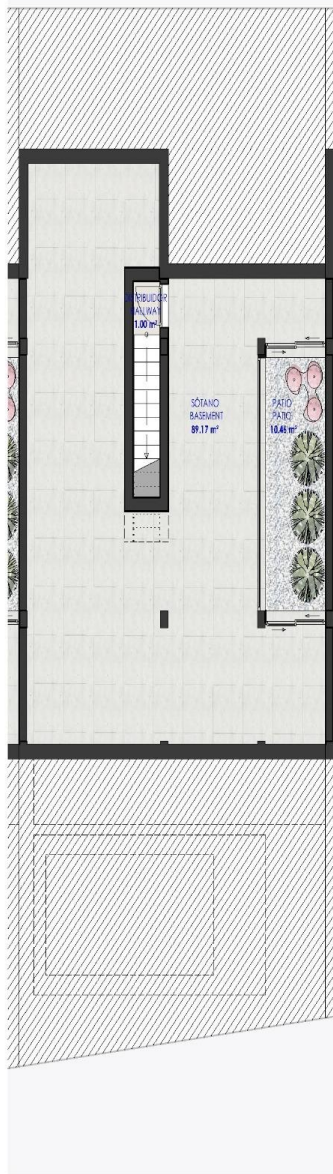
- Reinforced door
- Storage room







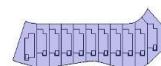




#### P-53.2.4. 4

SUP. PARCELA	218,75 m <sup>2</sup>
PLOT AREA	
SUP. CONSTRUIDA	119,32 m <sup>2</sup>
BUILT AREA	
SUP. CONSTR. SÓTANO	116,69 m <sup>2</sup>
BASEMENT BUILT AREA	
SUPERFICIE ÚTIL INTERIOR	84,79 m <sup>2</sup>
INDOOR USEFUL AREA	
SUPERFICIE ÚTIL EXTERIOR	265,51 m <sup>2</sup>
OUTDOOR USEFUL AREA	





PARCELA	SUPERFICIE
P-53.2.4. <b>1</b>	329,76 m <sup>2</sup>
P-53.2.4. <b>2</b>	235,23 m <sup>2</sup>
P-53.2.4. <b>3</b>	229,07 m <sup>2</sup>
P-53.2.4. <b>4</b>	218,75 m <sup>2</sup>
P-53.2.4. <b>5</b>	208,43 m <sup>2</sup>
P-53.2.4. <b>6</b>	201,56 m <sup>2</sup>
P-53.2.4. <b>7</b>	212,14 m <sup>2</sup>
P-53.2.4. <b>8</b>	230,52 m <sup>2</sup>
P-53.2.4. <b>9</b>	244,85 m <sup>2</sup>
P-53.2.4. <b>10</b>	249,86 m <sup>2</sup>
P-53.2.4. <b>11</b>	337,55 m <sup>2</sup>











***"OUR EXPERIENCE IS YOUR GUARANTEE"***