



REF: # 10983

TORREVIEJA (PUNTA PRIMA)



INFO	
PRICE:	364.000 €
PROPERTY TYPE:	Apartment
CITY:	Torrevieja (Punta Prima)
BEDROOMS:	2
Bathrooms:	2
Build (m2):	64
Plot (m2):	-
Terrace (m2):	17
Year:	
Floor:	1
Old price	-



DESCRIPTION

NEW BUILD RESIDENTIAL COMPLEX IN PUNTA PRIMA New Build residential complex of 220 apartments in Punta Prima, Torrevieja. Apartments with 2 and 3 bedrooms and 2 bathrooms, open plan kitchen with living room, fitted wardrobes, all of them with large terraces. Ground floor apartments with garden and penthouses with solarium. All homes are delivered with an underground parking space. The residential has garden areas with swimming pools and paddle tennis court. Children can enjoy their own children's pool, as well as a children's play area. Punta Prima, located just 5 km from Torrevieja, is characterized by good communication and health infrastructures, the proximity to Alicante airport, and the number of services open throughout the year. Just 10 km away we can find the golf courses of Villamartín, Campoamor, Las Ramblas, Las Colinas and Lo Romero, as well as the commercial centres of La Zenia and Habaneras.

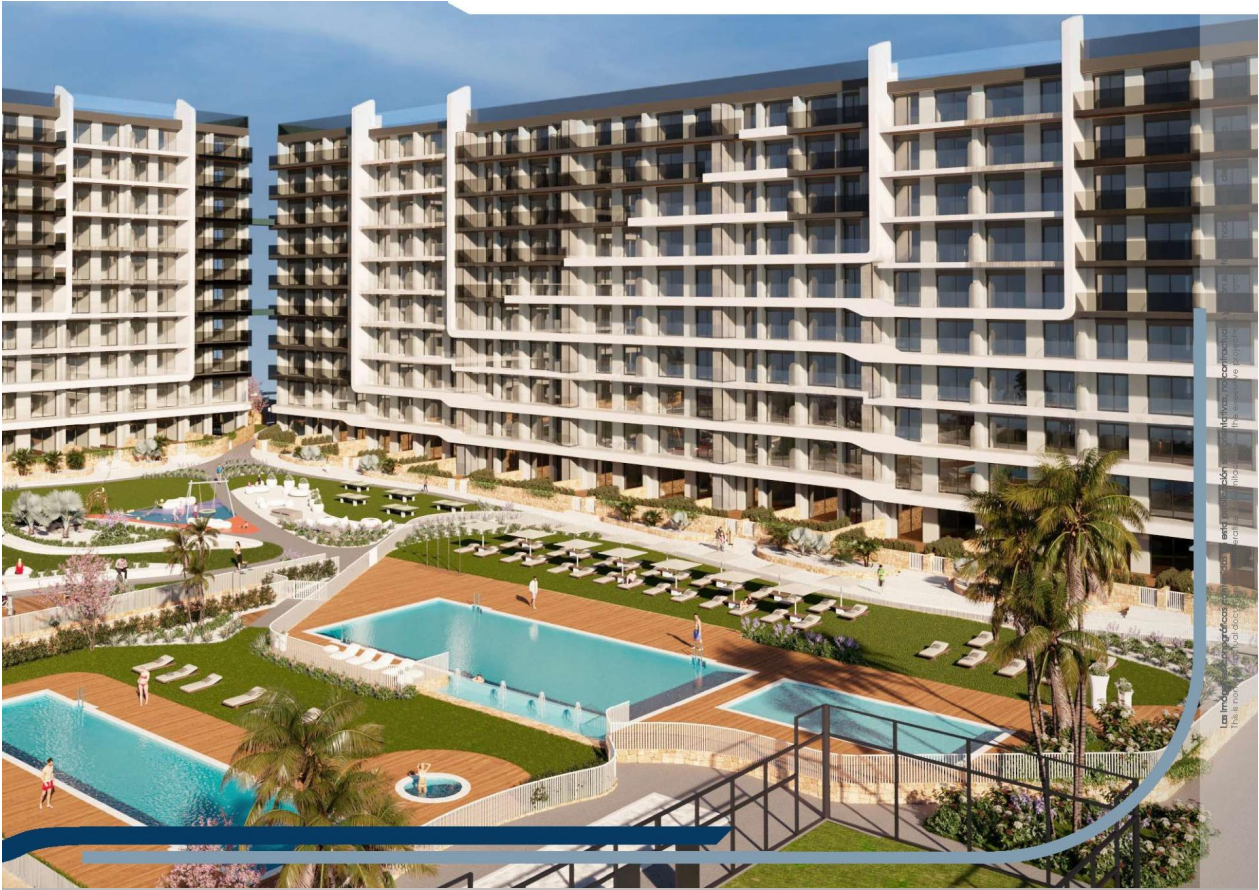
ENERGETIC CERTIFIED



STYLE	VIEWS	AIRCONDITIONING	DISTANCE TO :
<ul style="list-style-type: none"> • Modern 	<ul style="list-style-type: none"> • Panoramic views 	<ul style="list-style-type: none"> • Central airconditioning 	Beach : 50 m <hr/> Airport: 60 Km <hr/> Town center : 6 Km
FURNITURE	PARKING	MAIN LIVING AREA	FLOORING
<ul style="list-style-type: none"> • Not furnished 	Parking no Cars: 1 <hr/>	<ul style="list-style-type: none"> • Gym 	<ul style="list-style-type: none"> • Tile floors • Stone floors
KITCHEN	GARDEN AND TERRACES	EXTRA	
<ul style="list-style-type: none"> • Open kitchen 	<ul style="list-style-type: none"> • Open terrace • Fenced • Communal Garden 	<ul style="list-style-type: none"> • Reinforced door • Double glazed windows • Lift 	

PROPERTY GALLERY





Las Vegas, Nevada, USA
This is now a real estate project.



 In Sun Properties Spain





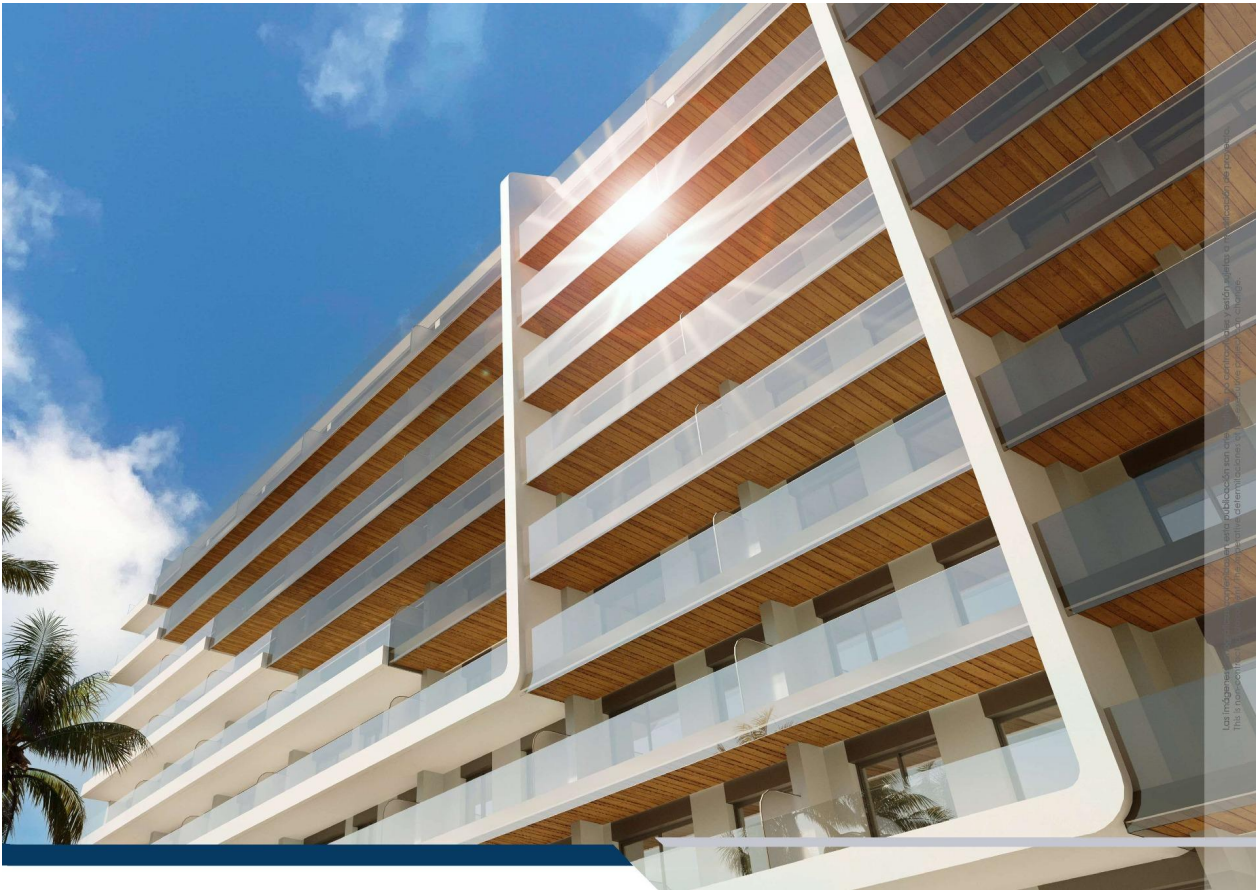


Los planes presentados en este folleto son meramente orientativos y no constituyen oferta alguna. No se garantiza el cumplimiento de los plazos de ejecución del proyecto.









Los indicadores de superficie y volumen publicados en este documento son de carácter informativo y no constituyen un compromiso por parte del promotor. Este es un documento de carácter preliminar y las especificaciones técnicas y constructivas pueden sufrir modificaciones sin previo aviso.

VIVIENDA TIPO 2

ESCALERA 3-5 / STAIRCASE 3-5
PLANTAS 1-8 / FLOORS 1-8

SUPERFICIES ÚTILES / USEFUL AREA

SUPERFICIES ÚTILES INTERIORES / USEFUL INTERIOR AREA		
1	ACCESO / ACCESS	3.61 m ²
2	PASO / HALLWAY	2.23 m ²
3	ESTAR-COM.-COCINA / KITCHEN-LIVING	29.44 m ²
4	TENDEDERO (100%) / UTILITY ROOM	2.16 m ²
5	DORMITORIO 01 / BEDROOM 01	11.67 m ²
6	DORMITORIO 02 / BEDROOM 02	6.72 m ²
7	BAÑO 01 / BATHROOM 01	3.52 m ²
8	BAÑO 02 / BATHROOM 02	3.68 m ²
		63.03 m²

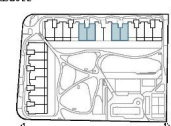
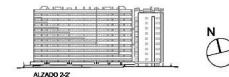
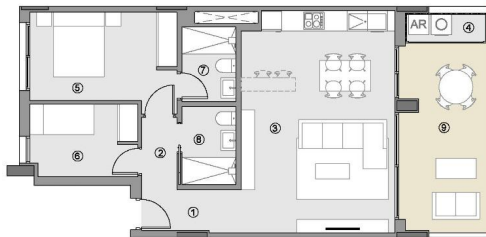
SUPERF. ÚTILES EXTERIORES / USEFUL EXTERIOR AREA

9	TERRAZA 01 (100%) / TERRACE 01	14.72 m ²
		14.72 m²

SUP. ÚTIL TOTAL/TOTAL USEFUL AREA 77.75 m²

SUPERFIC. CONSTRUIDAS / BUILT AREA

SUP. CONST. INTERIOR / INTERIOR BUILT AREA		70.11 m ²
SUP. CONST. EXT. (50%) / EXT. BUILT AREA		8.41 m ²
SUP. CONST. Z/C / BUILT AREA OF SHARED AREAS		10.31 m ²
SUP. CONST. TOTAL/TOT. BUILT AREA		88.83 m²



0 1 2 3 4 5 m E:1/125

PLANO PROVISIONAL





"OUR EXPERIENCE IS YOUR GUARANTEE"