



REF: # 10940

ALICANTE (SAN JUAN)



#### INFO

**PRICE:** 1.000.000 €

**PROPERTY TYPE:** Apartment

**CITY:** Alicante (San Juan)

**BEDROOMS:** 3

**Bathrooms:** 2

**Build ( m2 ):** 138

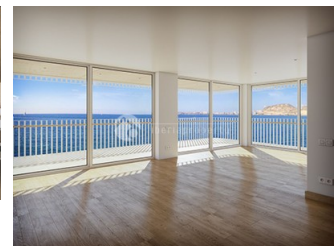
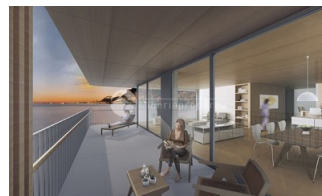
**Plot ( m2 ):** -

**Terrace ( m2 ):** 37

**Year:**

**Floor:** -

**Old price** -



#### DESCRIPTION

The iconic building Playa de la Almadraba is a unique treasure that we put at your disposal exclusively. With easy access to Playa de San Juan and the center of Alicante, this is one of the most desirable areas between Playa de la Albufereta and Cabo de las Huertas in Alicante. We want you to enjoy a unique and exceptional place. Alicante architect Javier García-Solera has designed an iconic building. A guarantee of functionality and uniqueness. The project offers a residential complex with 7 apartments (one per floor) with 3 bedrooms, 2 parking spaces per apartment, storage room, swimming pool, gym and garden areas. According to your choice, we have designed 2 different distributions to choose from according to your preferences. These are homes of 146m2 usable and 179m2 built, with option B proposing a living room, dining room, kitchen and terrace of 82m2 facing the sea.

#### ENERGETIC CERTIFIED



<b>STYLE</b>	<b>AIRCONDITIONING</b>	<b>DISTANCE TO :</b>	<b>ORIENTATION</b>
<ul style="list-style-type: none"><li>• Modern</li></ul>	<ul style="list-style-type: none"><li>• Central airconditioning</li></ul>	Beach : 50 m Airport: 20 Km Town center : 100 m	South
<b>FURNITURE</b>	<b>PARKING</b>	<b>MAIN LIVING AREA</b>	<b>FLOORING</b>
<ul style="list-style-type: none"><li>• Not furnished</li></ul>	Garage no Cars : 1 Parking no Cars: 2	<ul style="list-style-type: none"><li>• Storage</li><li>• Bathroom en-suite</li></ul>	<ul style="list-style-type: none"><li>• Tile floors</li></ul>
<b>GARDEN AND TERRACES</b>	<b>HEATING</b>	<b>EXTRA</b>	
<ul style="list-style-type: none"><li>• Covered terrace</li><li>• Open terrace</li><li>• Exterior lights</li><li>• Automatic watering system</li><li>• Palm trees</li><li>• Play Ground</li><li>• Landscaped</li><li>• Stone walls</li><li>• Electric gate</li><li>• Communal Garden</li></ul>	<ul style="list-style-type: none"><li>• Floor heating bathrooms</li></ul>	<ul style="list-style-type: none"><li>• Built in wardrobes</li><li>• Alarm</li><li>• Reinforced door</li><li>• Double glazed windows</li><li>• Satellite TV</li><li>• Storage room</li><li>• Laundry room</li><li>• Lift</li><li>• Internet</li></ul>	



















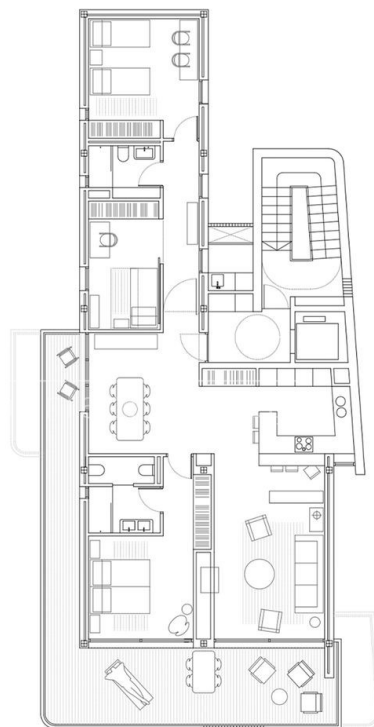
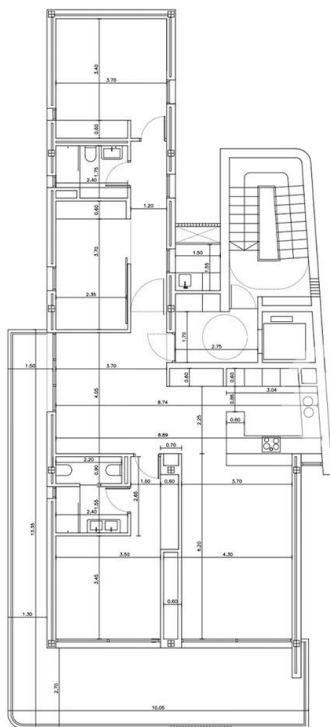


#### A (PLANTAS 4-6)

SALA ESTAR	24,68
COMEDOR+VEST.	21,54
COCINA	8,46
DORMITORIO 1	16,23
DORMITORIO 2	14,74
DORMITORIO 3	9,87
PASOS	6,78
BAÑO 1	5,77
BAÑO 2	4,20
LAVADERO	2,33
TOTAL ÚTIL	114,60
TOTAL CONSTRUIDA	138,50
TERRAZA	36,50

VESTIBULO	5,67
REP. ESCALERA	13,85
REP. PLANTA BAJA	20,85
REP. GARAJE	73,40
REP. ZONAS COMUNES	113,97

\* Este documento tiene carácter orientativo y puede experimentar variaciones durante el desarrollo del proyecto



#### A (PLANTAS 4-6)

SALA ESTAR	24,68
COMEDOR	21,54
COCINA	8,46
DORMITORIO 1	16,23
DORMITORIO 2	14,74
DORMITORIO 3	9,87
PASOS	6,78
BAÑO 1	5,77
BAÑO 2	4,20
LAVADERO	2,33
TOTAL ÚTIL	114,60
TOTAL CONSTRUIDA	138,50
TERRAZA	36,50

VESTIBULO	5,67
REP. ESCALERA	13,85
REP. PLANTA BAJA	20,85
REP. GARAJE	73,40
REP. ZONAS COMUNES	113,97

\* Este documento tiene carácter orientativo y puede experimentar variaciones durante el desarrollo del proyecto

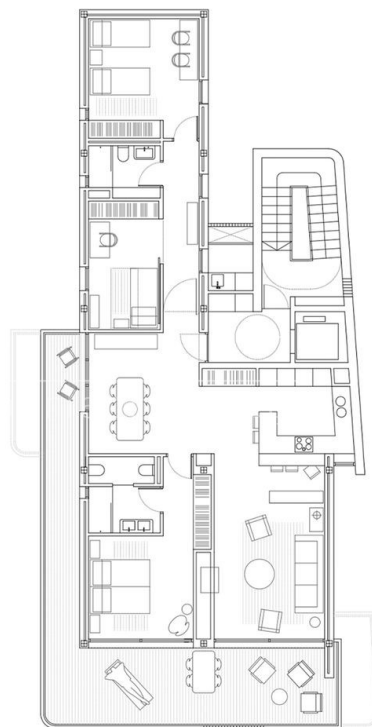
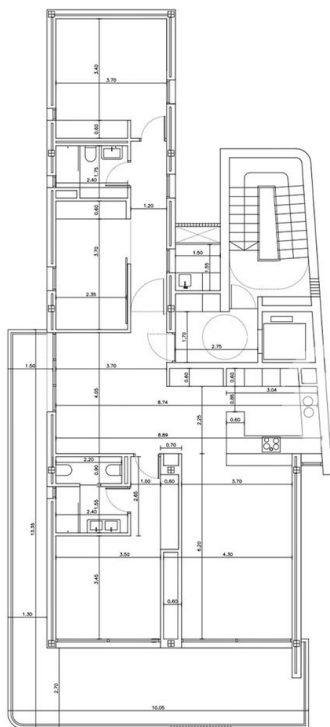


#### A (PLANTAS 4-6)

SALA ESTAR	24,68
COMEDOR+VEST.	21,54
COCINA	8,46
DORMITORIO 1	16,23
DORMITORIO 2	14,74
DORMITORIO 3	9,87
PASOS	6,78
BAÑO 1	5,77
BAÑO 2	4,20
LAVADERO	2,33
TOTAL ÚTIL	114,60
TOTAL CONSTRUIDA	138,50
TERRAZA	36,50

VESTIBULO	5,67
REP. ESCALERA	13,85
REP. PLANTA BAJA	20,85
REP. GARAJE	73,40
REP. ZONAS COMUNES	113,97

\* Este documento tiene carácter orientativo y puede experimentar variaciones durante el desarrollo del proyecto



#### A (PLANTAS 4-6)

SALA ESTAR	24,68
COMEDOR	21,54
COCINA	8,46
DORMITORIO 1	16,23
DORMITORIO 2	14,74
DORMITORIO 3	9,87
PASOS	6,78
BAÑO 1	5,77
BAÑO 2	4,20
LAVADERO	2,33
TOTAL ÚTIL	114,60
TOTAL CONSTRUIDA	138,50
TERRAZA	36,50

VESTIBULO	5,67
REP. ESCALERA	13,85
REP. PLANTA BAJA	20,85
REP. GARAJE	73,40
REP. ZONAS COMUNES	113,97

\* Este documento tiene carácter orientativo y puede experimentar variaciones durante el desarrollo del proyecto





**"OUR EXPERIENCE IS YOUR GUARANTEE"**