



REF: # 10938

TORRE PACHECO



#### INFO

PRICE: 945.000 €

PROPERTY TYPE: Villa

CITY: Torre Pacheco

BEDROOMS: 3

Bathrooms: 4

Build ( m2 ): 329

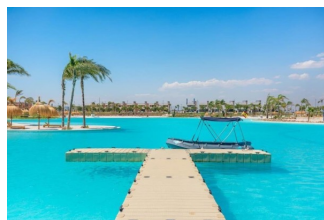
Plot ( m2 ): 385

Terrace ( m2 ): -

Year: -

Floor: -

Old price -



#### DESCRIPTION

NEW BUILD VILLAS IN PRIVATE GATED RESORT IN PROVINCE OF MURCIA New Build villas in private gated resort in the Murcia region, surrounded by excellent golf courses and just 10 minutes from the sandy beaches of the Mar Menor Sea. Villas build over of 2 floors and has 3 bedrooms, 4 bathrooms, open plan kitchen and living-dining room, fitted wardrobes, private garden with the pool, private solarium, parking and include an "open-plan" finished basement with an additional bathroom. Located in a private gated resort, with a main access entrance and 24 hours security. The resort is designed around an impressive 126.000 m2 green area. It comprises walking and cycling paths, sport facilities, paddle and tennis courts, a mini-golf course, gardens, dog parks, leisure areas, clubhouse.... Also in the central area is the jewel of the resort, a crystal-clear artificial lake of almost 17.000m2 of water surface, surrounded by white sandy beaches and palm trees, bringing a piece of the Caribbean to the Murcia Region. There are 2 islands in the lake, one of them has its own bar, there are also "beach Chiringuitos" spread around the lake. The resort is strategically located less than 4 km from

the beach and the town of Los Alcázares, where you can practice various water sports, surrounded by several golf courses and the city of Cartagena less than 15 minutes by car and 22 km from Murcia airport, therefore having a wide cultural, gastronomic and sports offer within reach.



**VIEWS**

- Panoramic views

**GARDEN AND  
TERRACES**

- Open terrace
- Private garden

**EXTRA**

- Reinforced door
- Storage room





















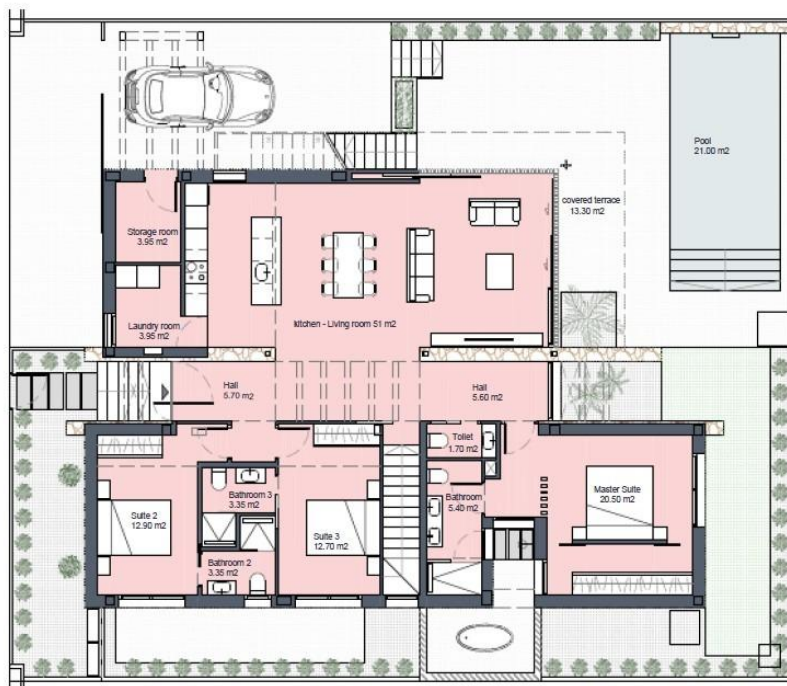






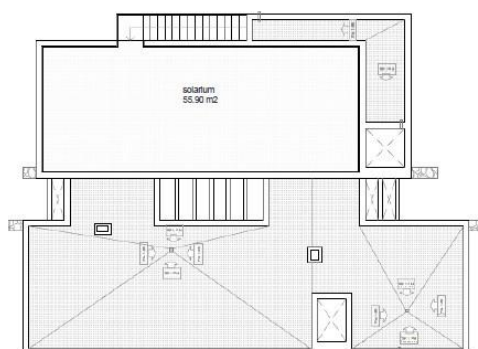






## SURFACES

Villa Signature 9	385 m²
Superficie construida	
Ground floor	166.00 m²
Basement	102.70 m²
<b>INTERIOR VIVIENDA</b>	<b>328.70 m²</b>
Covered terrace	13.30
Uncovered spaces (Ground floor)	205.70 m²
Solarium	55.90 m²
<b>TOTAL OUTDOOR SPACES</b>	<b>274.90 m²</b>

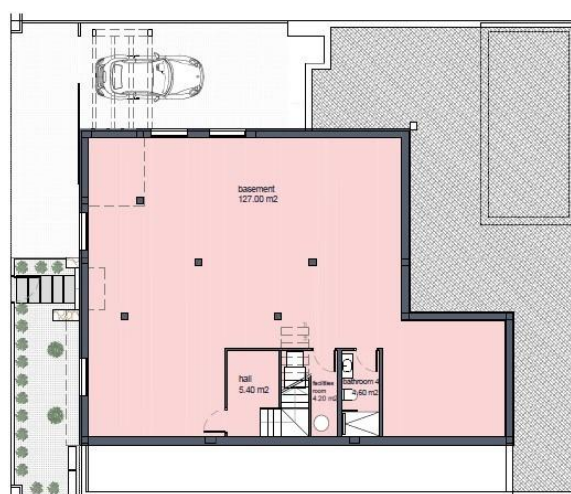


## SURFACES

Villa Signature 9	385 m²
Superficie construida	
Ground floor	166.00 m²
Basement	102.70 m²
<b>INTERIOR VIVIENDA</b>	<b>328.70 m²</b>
Covered terrace	13.30
Uncovered spaces (Ground floor)	205.70 m²
Solarium	55.90 m²
<b>TOTAL OUTDOOR SPACES</b>	<b>274.90 m²</b>

SOLARIUM

BASEMENT









***"OUR EXPERIENCE IS YOUR GUARANTEE"***