



REF: # 10934

TORRE PACHECO (SANTA ROSALIA LAKE AND LIFE RESORT)



#### INFO

PRICE: 790.000 €

PROPERTY TYPE: Villa

CITY: Torre Pacheco (Santa Rosalia Lake and Life Resort)

BEDROOMS: 3

Bathrooms: 2

Build ( m2 ): 266

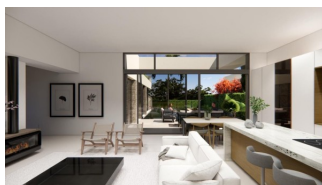
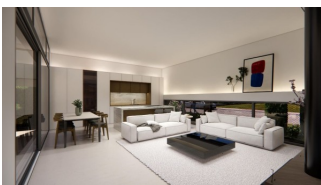
Plot ( m2 ): 338

Terrace ( m2 ): 90

Year: -

Floor: -

Old price -



#### DESCRIPTION

NEW BUILD VILLAS IN PRIVATE GATED RESORT IN PROVINCE OF MURCIA New Build villas in private gated resort in the Murcia region, surrounded by excellent golf courses and just 10 minutes from the sandy beaches of the Mar Menor Sea. Villas build over of 2 floors and has 3 bedrooms, 2 bathrooms and a guest toilet and are designed with a contemporary style and open concept, consisting of a fully equipped kitchen and living-dining room, fitted wardrobes, private garden with the pool and off road parking space, private solarium. Large villa of 146m<sup>2</sup> plus a very useful 120m<sup>2</sup> basement finished with smooth walls, water and electrical points. This offers the perfect opportunity to use as additional accommodation, office, gym, cinema room, children's playroom.... Located in a private gated resort, with a main access entrance and 24 hours security. The resort is designed around an impressive 126.000 m<sup>2</sup> green area. It comprises walking and cycling paths, sport facilities, paddle and tennis courts, a mini-golf course, gardens, dog parks, leisure

areas, clubhouse.... Also in the central area is the jewel of the resort, a crystal-clear artificial lake of almost 17.000m2 of water surface, surrounded by white sandy beaches and palm trees, bringing a piece of the Caribbean to the Murcia Region. There are 2 islands in the lake, one of them has its own bar, there are also “beach Chiringuitos” spread around the lake. The resort is strategically located less than 4 km from the beach and the town of Los Alcázares, where you can practice various water sports, surrounded by several golf courses and the city of Cartagena less than 15 minutes by car and 22 km from Murcia airport, therefore having a wide cultural, gastronomic and sports offer within reach.



**VIEWS**

- Panoramic views

**AIRCONDITIONING**

- Central airconditioning

**PARKING**

Parking no Cars: 1

**GARDEN AND  
TERRACES**

- Open terrace
- Fenced
- Private garden

**EXTRA**

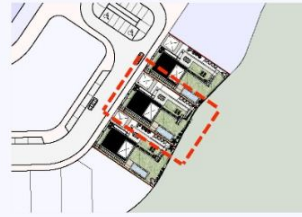
- Reinforced door

## PROPERTY GALLERY



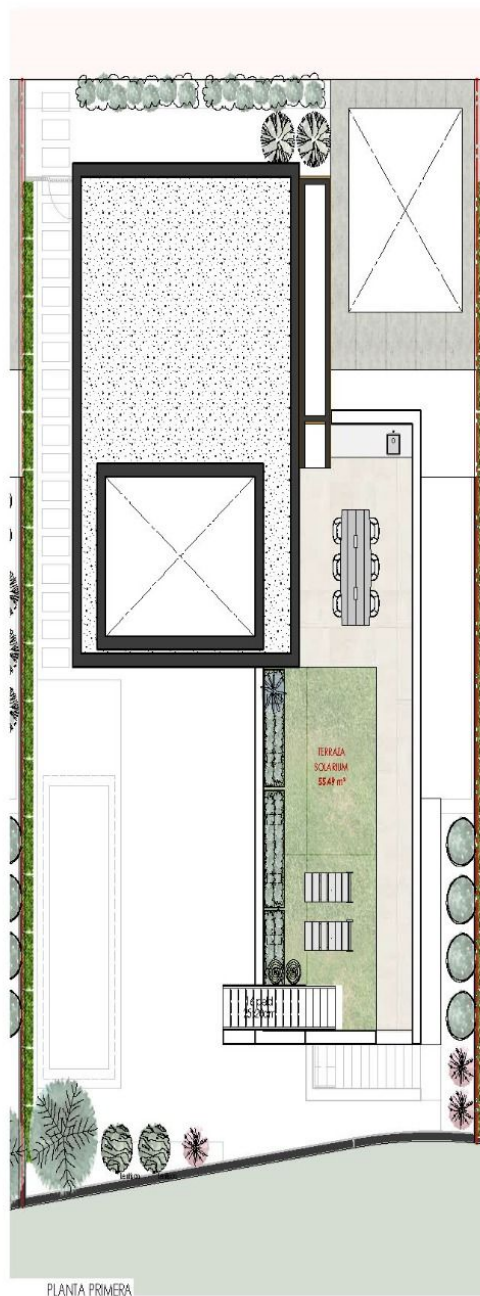
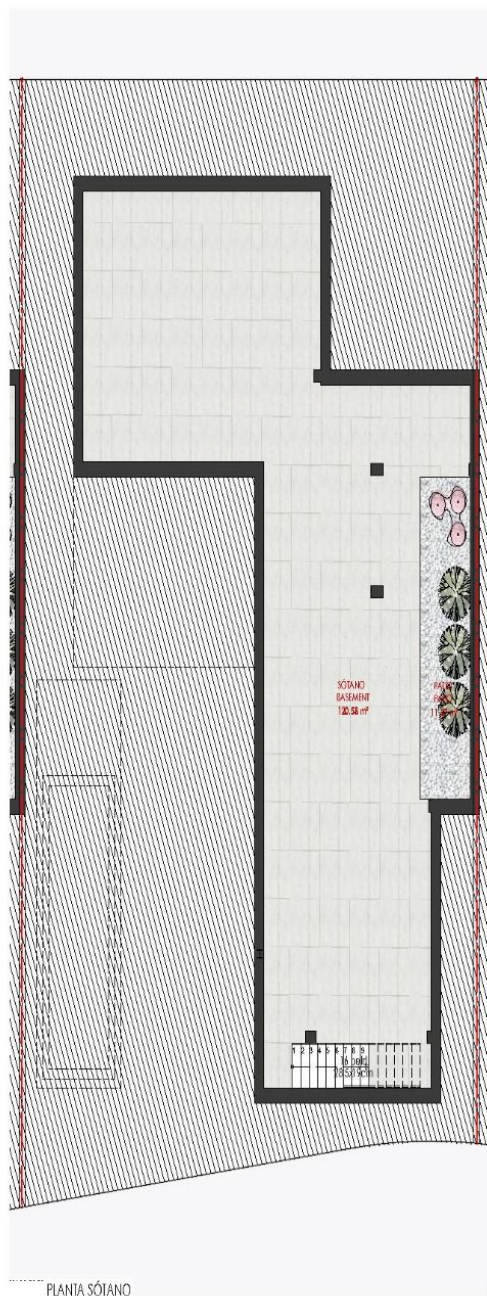






SUPERFICIE DE PARCELA		338.81 m²
EDIFICABILIDAD MÁXIMA		164.86 m²
EDIFICABILIDAD CONSUMIDA		142.47 m²
PISCINA		11.76 m²
ESPACIO LIBRE DE PARCELA S/R		121.18 m²
ESPACIO LIBRE DE PARCELA B/R		11.27 m²
SUPERFICIES CONSTRUIDAS TOTALES		
VIVIENDA		130.11m²
PORCHES Y PÉRGOLAS	(24.71 m²)	12.36 m²
PLANTA SÓTANO		143.36 m²

















***"OUR EXPERIENCE IS YOUR GUARANTEE"***