



REF: # 10933

TORRE PACHECO (SANTA ROSALIA LAKE AND LIFE RESORT)



#### INFO

|                 |  |
|-----------------|--|
| PRICE:          | 1.214.000 €  |
| PROPERTY TYPE:  | Villa  |
| CITY:           | Torre Pacheco (Santa Rosalia Lake and Life Resort) |
| BEDROOMS:       | 4  |
| Bathrooms:      | 4  |
| Build ( m2 ):   | 249  |
| Plot ( m2 ):    | 392  |
| Terrace ( m2 ): | -  |
| Year:           | -  |
| Floor:          | -  |
| Old price       | -  |



#### DESCRIPTION

NEW BUILD VILLAS IN PRIVATE GATED RESORT IN PROVINCE OF MURCIA 14 exclusive New Build villas on a prime plot overlooking the lake on this beautiful new lake and life resort. There are plots available ranging in size from 392 m2 up to 745 m2. The villas will be over two levels plus a basement of 150 m2 with an atrium. The interior is fully customisable to suit your desires. Villas has 4 bedrooms, 4 bathrooms, open plan kitchen with the lounge area, fitted wardrobes, private garden with the pool and off road parking space. Located in a private gated resort, with a main access entrance and 24 hours security. The resort is designed around an impressive 126.000 m2 green area. It comprises walking and cycling paths, sport facilities, paddle and tennis courts, a mini-golf course, gardens, dog parks, leisure areas, clubhouse.... Also in the central area is the jewel of the resort, a crystal-clear artificial lake of almost 17.000m2 of water surface, surrounded by white sandy beaches

and palm trees, bringing a piece of the Caribbean to the Murcia Region. There are 2 islands in the lake, one of them has its own bar, there are also “beach Chiringuitos” spread around the lake. The resort is strategically located less than 4 km from the beach and the town of Los Alcázares, where you can practice various water sports, surrounded by several golf courses and the city of Cartagena less than 15 minutes by car and 22 km from Murcia airport, therefore having a wide cultural, gastronomic and sports offer within reach.



**VIEWS**

- Panoramic views

**GARDEN AND  
TERRACES**

- Open terrace
- Private garden

**EXTRA**

- Reinforced door























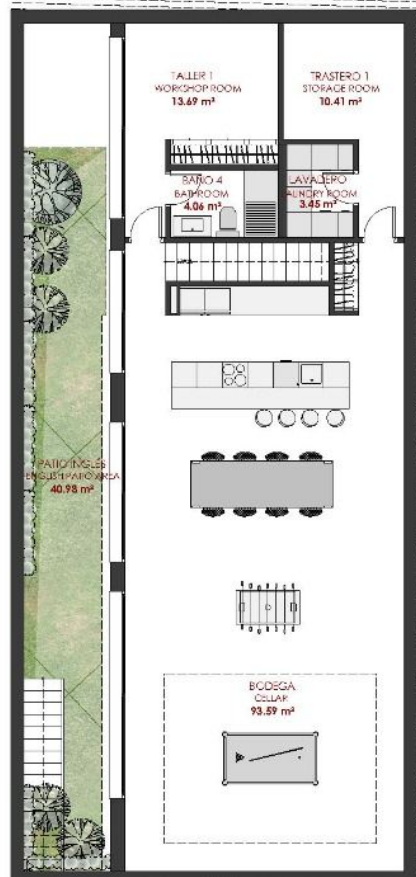












| SUPERFICIES CONSTRUIDAS              |                       |          |                      |
|--------------------------------------|-----------------------|----------|----------------------|
| PLANTA BAJA                          |                       |          |                      |
|                                      | SUPERFICIE PROYECTADA | COMPLETO | SUPERFICIE COMPUTADA |
| VIVIENDA CERRADA PB                  | 113,50 m²             | 100%     | 113,50 m²            |
| PORCHES PB                           | 17,39 m²              | 50%      | 8,70 m²              |
|                                      |                       | SCT PB   | 122,20 m²            |
| PLANTA PRIMERA                       |                       |          |                      |
|                                      | SUPERFICIE PROYECTADA | COMPLETO | SUPERFICIE COMPUTADA |
| VIVIENDA CERRADA P1                  | 73,59 m²              | 100%     | 73,59 m²             |
| PÉRCOLAS                             | 6,97 m²               | 50%      | 3,49 m²              |
|                                      |                       | SCT P1   | 77,08 m²             |
| SUPERFICIE CONSTRUIDA COMPUTABLE S/R |                       |          | 199,27 m²            |
| SUPERFICIE SÓTANO B/R                |                       |          | 150,07 m²            |

VIVIENDA TIPO PLANTA SÓTANO

"OUR EXPERIENCE IS YOUR GUARANTEE"