



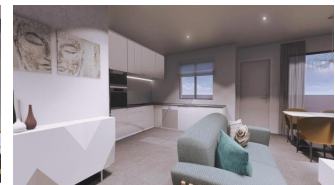
REF: # 10822

SAN PEDRO DEL PINATAR



INFO

PRICE:	205.000 €
PROPERTY TYPE:	Apartment
CITY:	San Pedro Del Pinatar
BEDROOMS:	2
Bathrooms:	2
Build (m2):	68
Plot (m2):	-
Terrace (m2):	-
Year:	-
Floor:	-
Old price	-



DESCRIPTION

NEW BUILD BUNGALOW APARTMENTS IN SAN PEDRO DEL PINATAR New Build residential complex of beautiful modern 2 bedrooms bungalow apartments in San Pedro Del Pinatar . This top floor bungalow has a large solarium. All bungalows has a parking space. It has common garden area with swimming pool. San Pedro del Pinatar's privileged location on the Mar Menor and Mediterranean coastline it attracts those with an interest in sailing and watersports, providing marina mooring and sailing clubs, while the beaches and natural mud baths attract those seeking safe sun, sea and sand. San Pedro del Pinatar has an established community and offers an excellent range of activities, including covered swimming pool and sports facilities, as well as a year round programme of social activities by the pleasant winter weather. The benefits of the mud baths, typical of the region, or the calm waters of the Mar Menor, have favoured the growth of Lo Pagán, which currently has all kind of amenities. In addition, it has an excellent location, just 5 minutes from the Commercial Centre Dos Mares. Murcia/Corvera airport is 30 minutes away and Alicante airport is an hour drive away.

ENERGETIC CERTIFIED



VIEWS

- Panoramic views

**GARDEN AND
TERRACES**

- Open terrace

EXTRA

- Reinforced door



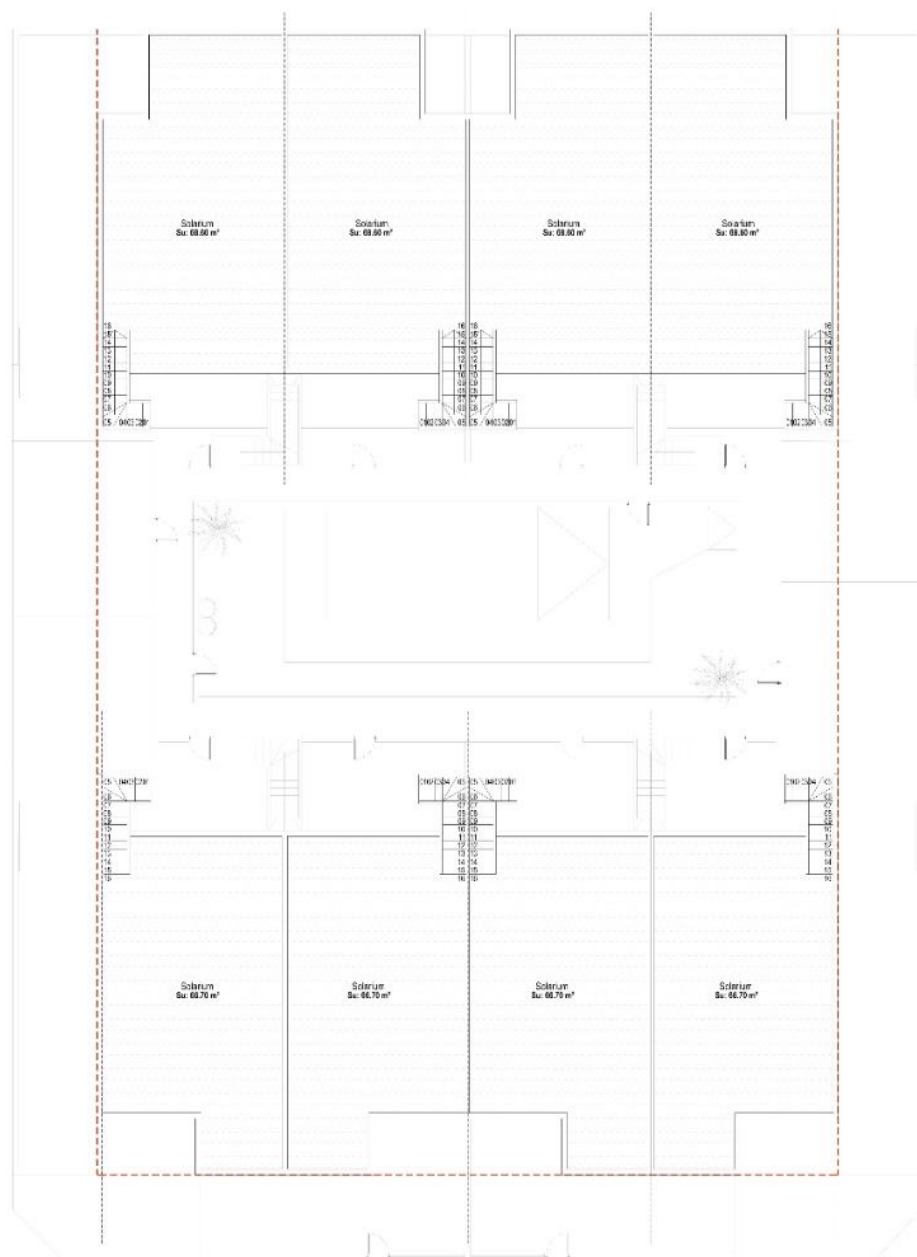








SOLARIUM GENERAL

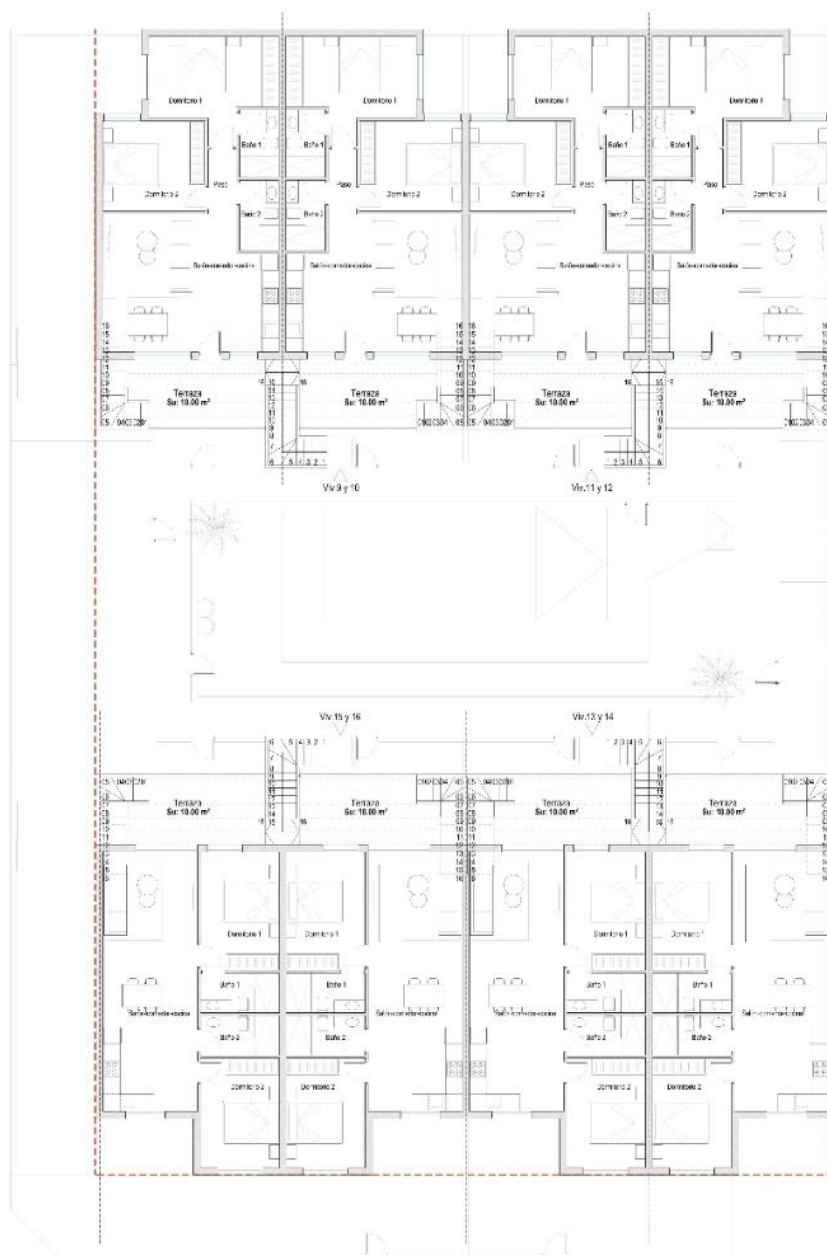


CUADRO DE SUPERFICIES

Vivienda	Planta	Uso	S. ÚT.	S. Com.		
1 y 4	Bajo	Vivienda	11.10 m²	10.00 m²		
		Pasillo	0.20 m²	2.70 m²		
		TOTAL	70.24 m²	96.37 m²		
TOTAL X 2 viviendas					135.85 m²	172.24 m²
2 y 3	Bajo	Vivienda	12.10 m²	7.10 m²		
		Pasillo	0.20 m²	2.70 m²		
		TOTAL	103.25 m²	109.50 m²		
TOTAL X 2 viviendas					152.25 m²	169.50 m²
5 y 8	Bajo	Vivienda	11.10 m²	11.10 m²		
		Pasillo	0.20 m²	2.70 m²		
		TOTAL	75.15 m²	94.20 m²		
TOTAL X 2 viviendas					150.30 m²	169.50 m²
6 y 7	Bajo	Vivienda	11.10 m²	11.10 m²		
		Pasillo	0.20 m²	2.70 m²		
		TOTAL	74.60 m²	92.77 m²		
TOTAL X 2 viviendas					149.75 m²	169.50 m²

Vivienda	Planta	Uso	S. ÚT.	S. Com.	
9 y 12	Bajo	Vivienda	11.10 m ²	11.10 m ²	
		Pasillo	0.20 m ²	2.70 m ²	
		TOTAL	63.15 m ²	72.56 m ²	
		TOTAL X 2 Viviendas		126.30 m ²	145.10 m ²
10 y 11	Bajo	Vivienda	11.10 m ²	11.10 m ²	
		Pasillo	0.20 m ²	2.70 m ²	
		TOTAL	63.15 m ²	72.56 m ²	
		TOTAL X 2 Viviendas		126.30 m ²	145.10 m ²
13 y 16	Bajo	Vivienda	11.10 m ²	11.10 m ²	
		Pasillo	0.20 m ²	2.70 m ²	
		TOTAL	61.40 m ²	70.56 m ²	
		TOTAL X 2 Viviendas		122.80 m ²	141.90 m ²
14 y 15	Bajo	Vivienda	11.10 m ²	11.10 m ²	
		Pasillo	0.20 m ²	2.70 m ²	
		TOTAL	61.40 m ²	69.26 m ²	
		TOTAL X 2 Viviendas		122.80 m ²	138.56 m ²
		TOTAL		3.26 m ²	8.00 m ²
		TOTAL		1.305.40 m ²	1.241.52 m ²

PLANTA PRIMERA GENERAL

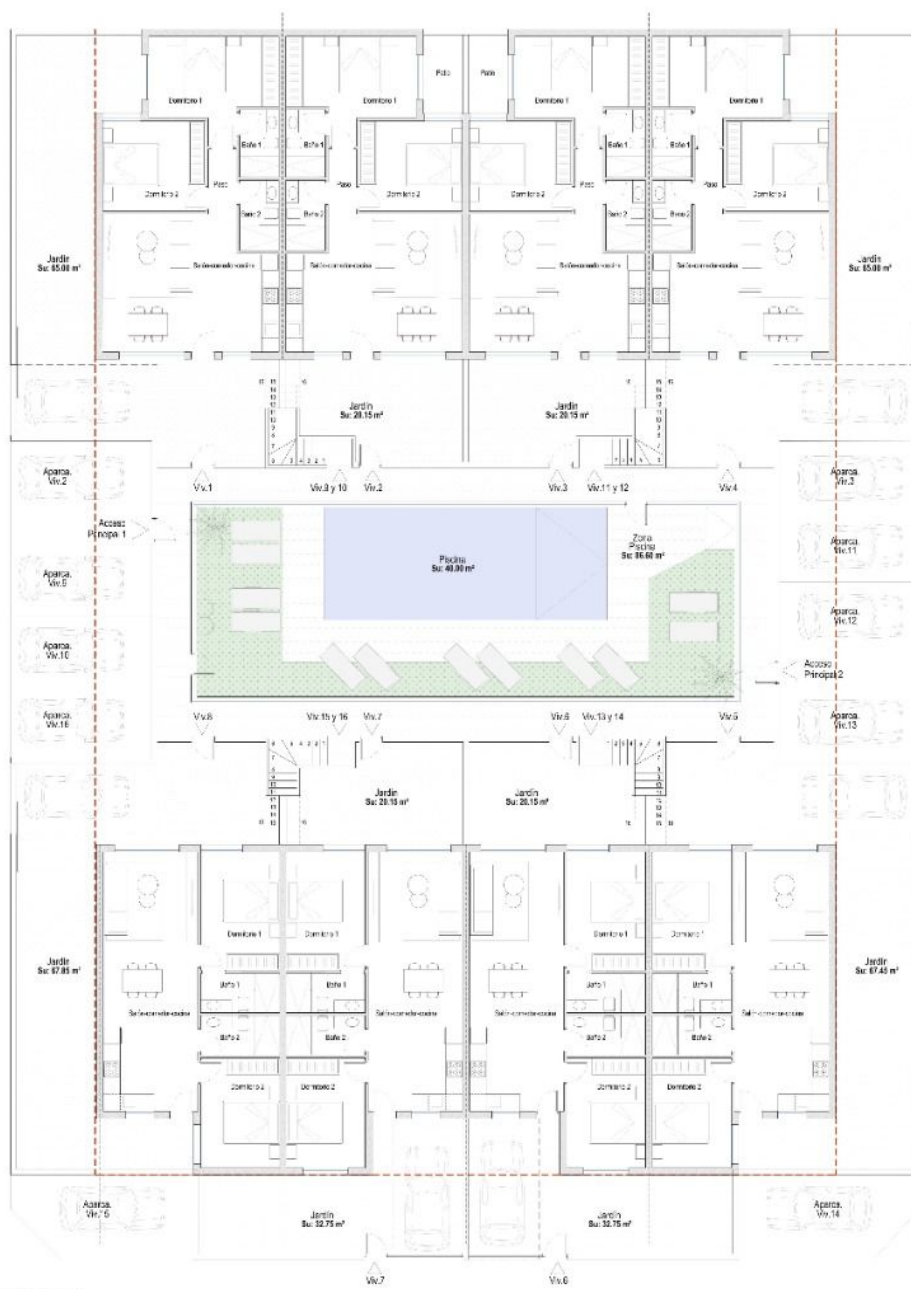


CUADRO DE SUPERFICIES

Vivienda	Partes	Uso	S. Útil	S. Const.
1 y 4	Bajo	Vivienda	11.00 m²	10.00 m²
		Paseo	10.00 m²	10.00 m²
		TOTAL	21.00 m²	20.00 m²
2 y 3	Bajo	Vivienda	11.00 m²	10.00 m²
		Paseo	10.00 m²	10.00 m²
		TOTAL	21.00 m²	20.00 m²
5 y 8	Bajo	Vivienda	11.00 m²	10.00 m²
		Paseo	10.00 m²	10.00 m²
		TOTAL	21.00 m²	20.00 m²
6 y 7	Bajo	Vivienda	11.00 m²	10.00 m²
		Paseo	10.00 m²	10.00 m²
		TOTAL	21.00 m²	20.00 m²

Vivienda	Partes	Uso	S. Útil	S. Const.
9 y 12	Bajo	Vivienda	11.00 m²	10.00 m²
		Paseo	10.00 m²	10.00 m²
		TOTAL	21.00 m²	20.00 m²
10 y 11	Bajo	Vivienda	11.00 m²	10.00 m²
		Paseo	10.00 m²	10.00 m²
		TOTAL	21.00 m²	20.00 m²
13 y 16	Bajo	Vivienda	11.00 m²	10.00 m²
		Paseo	10.00 m²	10.00 m²
		TOTAL	21.00 m²	20.00 m²
14 y 15	Bajo	Vivienda	11.00 m²	10.00 m²
		Paseo	10.00 m²	10.00 m²
		TOTAL	21.00 m²	20.00 m²

PLANTA BAJA GENERAL



QUADRO DE SUPERFÍCIES

Vista	Plan	Obj.	S. 191	S. 200
1 y 4		10.000 10.000	10.000	10.000
	TOTAL		70,24 m2	56,37 m2
	ICTAL X 2 VENTANAS		153,85 m2	122,24 m2
2 y 3	Baja	10.000 10.000	10.000	10.000
	TOTAL		70,24 m2	56,37 m2
	ICTAL X 2 VENTANAS		153,85 m2	122,24 m2
5 y 8	Baja	10.000 10.000	10.000	10.000
	TOTAL		70,24 m2	56,37 m2
	ICTAL X 2 VENTANAS		153,85 m2	122,24 m2
6 y 7	Baja	10.000 10.000	10.000	10.000
	TOTAL		70,24 m2	56,37 m2
	ICTAL X 2 VENTANAS		153,85 m2	122,24 m2

Grupos	País	Sexo	S. 18	S. Cont.
9 y 12	Alemania	Vivencia	60,93 nG	72,95 nG
		TOTAL	61,30 nG	72,95 nG
	TOTAL, 8 2 Vivencias		60,93 nG	72,95 nG
				72,95 nG
10 y 11	Alemania	Vivencia	60,93 nG	72,95 nG
		TOTAL	61,30 nG	72,95 nG
	TOTAL, 8 2 Vivencias		60,93 nG	72,95 nG
				72,95 nG
13 y 16	Alemania	Vivencia	61,46 nG	70,92 nG
		TOTAL	61,46 nG	70,92 nG
	TOTAL, 8 2 Vivencias		61,46 nG	70,92 nG
				70,92 nG
14 y 15	Alemania	Vivencia	61,46 nG	70,92 nG
		TOTAL	61,46 nG	70,92 nG
	TOTAL, 8 2 Vivencias		61,46 nG	70,92 nG
				70,92 nG
TOTAL			1.163,46 nG	1.294,02 nG









"OUR EXPERIENCE IS YOUR GUARANTEE"