



REF: # 10752

LA MANGA DEL MAR MENOR



INFO

PRICE:	106.000 €
PROPERTY TYPE:	Apartment
CITY:	La Manga Del Mar Menor
BEDROOMS:	1
Bathrooms:	1
Build (m2):	51
Plot (m2):	-
Terrace (m2):	-
Year:	-
Floor:	-
Old price	-



DESCRIPTION

BEAUTIFUL SEA VIEW APARTMENTS IN LA MANGA This urbanization is located in the area with the greatest projection of La Manga, next to Los Miradores del Puerto and the extension of the Tomás Maestre marina. In addition, the same area has all the necessary services, such as cafes, supermarkets, restaurants, a beach bar, pharmacies, etc. Blocks of apartment offering 1 or 2 bedrooms apartments with lounge, kitchen and terrace with sea views. High quality high and low unit kitchens, national granite countertop, single stainless steel sink and drainer, ceramic hob, electric oven, extractor hood and electric heater. Armored entrance door in white, high-quality stained pine interior doors and closed built-in wardrobes with doors matching the interior doors, with three-drawer drawers and a separate mezzanine shelf with a bar. Pre-installation of air conditioning. Underfloor heating with temperature thermostat in each room of the house. Entrance portals specially decorated. Elevators with special keys for the blind and the disabled. Excellent swimming pool with solarium. Common areas paved,

landscaped and with benches. Fully enclosed pool with balustrade. Sport's zone. La Manga del Mar Menor is a natural strip of land surrounded by two seas, the Mar Menor and the Mediterranean Sea. To this rarity you can add the multiple leisure and free time options, restaurants, supermarkets, medical centers, pharmacies, nautical sports centers, golf courses. La Manga is located on the north coast of the Costa Calida and is a popular holiday destination for tourists. The narrow land strip separating the warm lagoon and the colder sea has a unique microclimate. It's one of the most exotic areas in Spain. Corvera airport is about 1 hour drive away and Alicante airport about 2 hours away.



VIEWS

- Panoramic views

**GARDEN AND
TERRACES**

- Open terrace

EXTRA

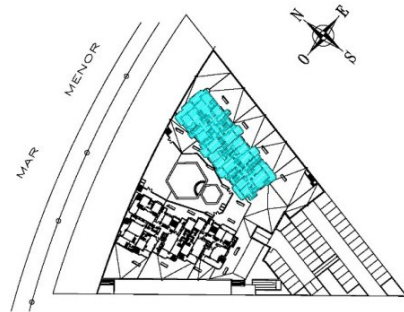
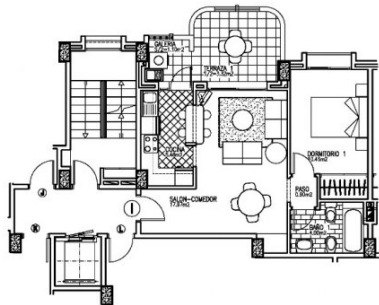
- Reinforced door











PLANTAS 1ª a 7ª

VIVIENDA TIPO		SUPERFICIE UTIL	SUP.CONSTRUIDA P.P.E.C.
VIVIENDA TIPO I		43,23m2	51,84m2

ESCALA: 1/100

"OUR EXPERIENCE IS YOUR GUARANTEE"