



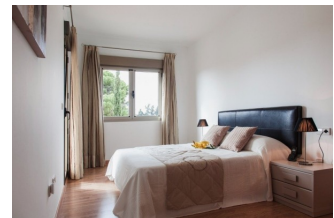
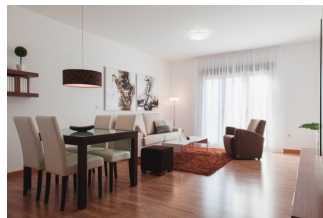
REF: # 10743

SAN PEDRO DEL PINATAR



INFO

PRICE:	99.000 €
PROPERTY TYPE:	Apartment
CITY:	San Pedro Del Pinatar
BEDROOMS:	2
Bathrooms:	2
Build (m2):	97
Plot (m2):	-
Terrace (m2):	-
Year:	-
Floor:	-
Old price	-



DESCRIPTION

FANTASTIC APARTMENT IN THE CENTRE OF SAN PEDRO DEL PINATAR - less than 1km from the beach! This 97m2 apartment in an exclusive residential complex, which is superbly located just 10 minutes from the beach, the Town Hall and on the road that leads to the famous Lo Pagan curve. The property consists of 2 bedrooms, 2 bathrooms and an open plan kitchen / dining area. San Pedro del Pinatar is a municipality on the coast of Murcia which is situated on the Mar Menor and is connected to the whole country via the AP-7 motorway and to the main European capitals via Alicante airport, 45 minutes away. San Pedro del Pinatar has everything to live at ease: the calm of the port and the sea, the healthy embrace of La Laguna, the proximity to all services and the joy of the curve of Lo Pagán. Only a 30 minute drive from Murcia (Covera) Airport.

ENERGETIC CERTIFIED



STYLE

- Modern

VIEWS

- Panoramic views

AIRCONDITIONING

- Central airconditioning

DISTANCE TO :

Beach : 1 Km

Airport: 40 Km

FURNITURE

- Not furnished

FLOORING

- Tile floors

KITCHEN

- Open kitchen

GARDEN AND TERRACES

- Open terrace

HEATING

- Central gas heating

EXTRA

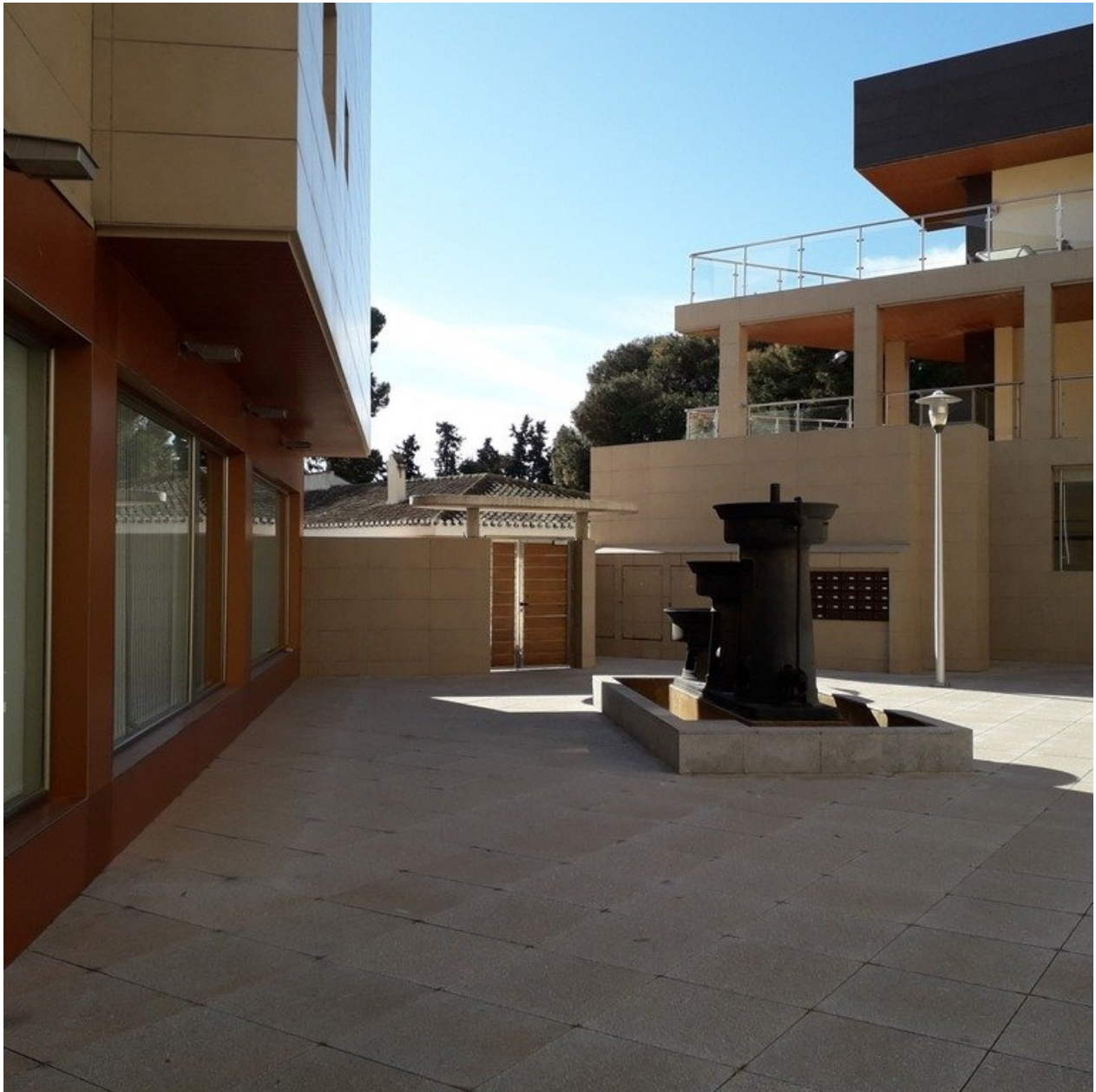
- Reinforced door
- Double glazed windows





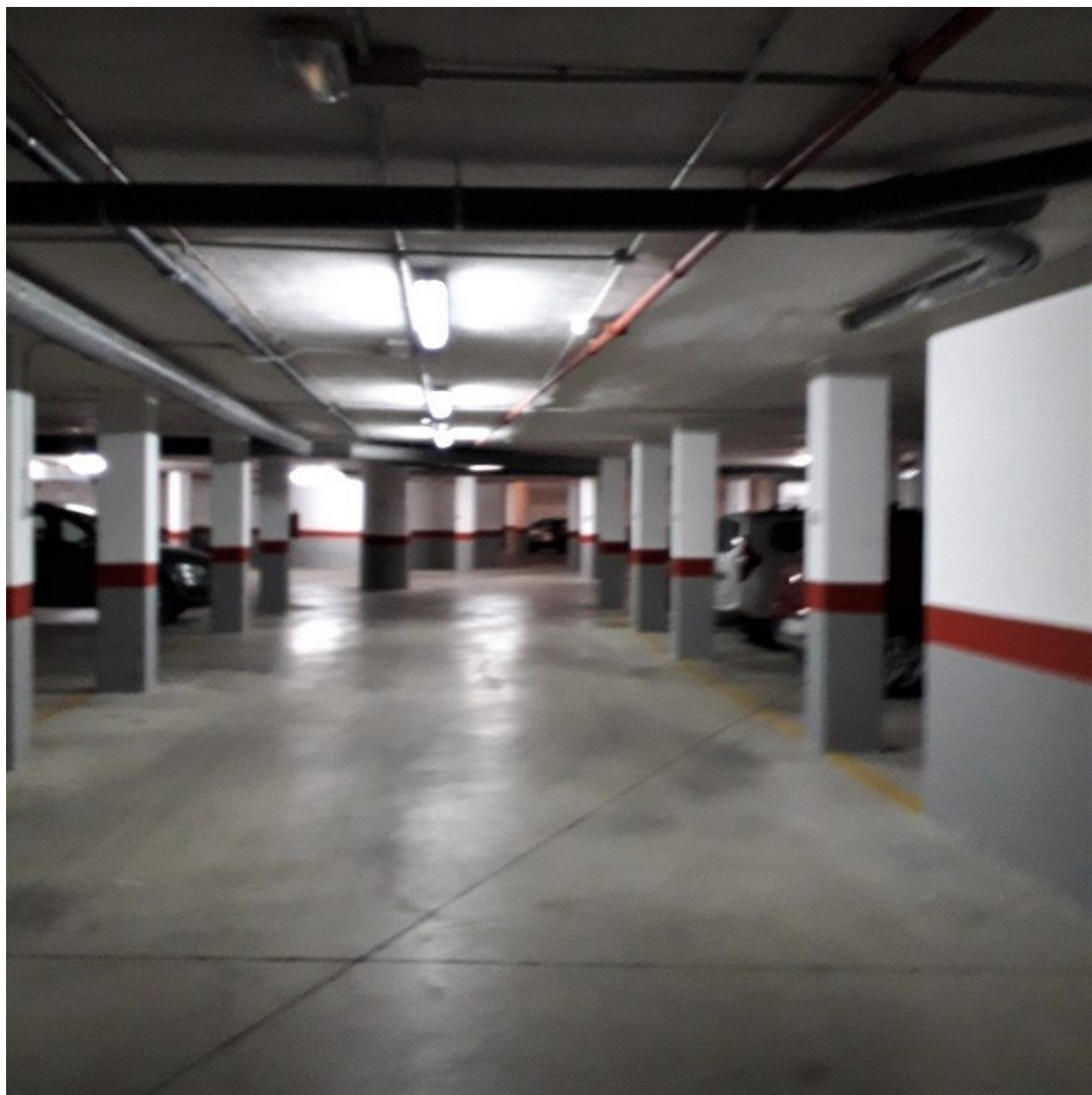


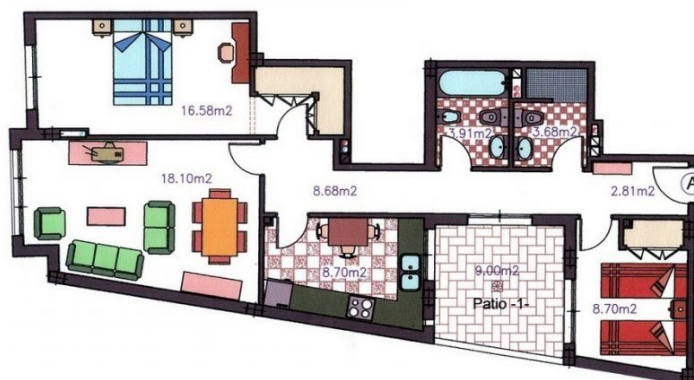












Planta 1ª

Escalera -1-	Vivienda -A-	2 dormitorios
Sup. Construida =	83,35m²	
Sup. P.P.S.C..... =	13,80m²	
Total Construida =	97,15m²	
Sup. Util..... =	71,16m²	

* Los precios pueden cambiar sin previo aviso

Escala — 1:100







"OUR EXPERIENCE IS YOUR GUARANTEE"