



REF: # 10612

BENITACHELL



INFO

PRICE: 1.720.000 €

PROPERTY TYPE: Villa

CITY: Benitachell

BEDROOMS: 3

Bathrooms: 3

Build (m2): 425

Plot (m2): 805

Terrace (m2): -

Year: -

Floor: -

Old price -



DESCRIPTION

NEW BUILD LUXURY VILLA IN CUMBRE DEL SOL New Build villa located on a plot situated in exclusive area of Residential Resort Cumbre del Sol, on an elevated plot that allows the property to enjoy a view of both the sea and the inland Costa Blanca North. The luxury villa with garden and private swimming pool is distributed over three floors, the access located on the top floor, where we have the parking and the lift that connects the entire house. On the middle floor are located the bedrooms, a total of 3 bedrooms all with access to terrace, a luxury to wake up going out to the terrace to breathe fresh air and start the day watching the Mediterranean. The ground floor, a large living area full of light, connected to the kitchen and the exterior, which makes this room the heart of the house. The outdoor spaces of this luxury villa have been taken care of in detail, a garden adapted to the plot, with terraced walls that generate various spaces and levels, and a large terrace with an infinity pool that merges with the sea, are its most characteristic elements. Villa located in one of the most exclusive areas of the Cumbre del Sol Residential Resort, a paradise facing the Mediterranean. With an enviable location, next to spectacular coves and beaches, surrounded by nature, with a unique gastronomy and leisure offer, well connected to two

international airports less than 100 km away, and strategically located between Alicante and Valencia city, a paradise on the Coast White North. Residential is part of the Cumbre del Sol urbanization, so the homes that are located in it enjoy all the services that a consolidated urbanization such as Cumbre del Sol offers, which has a commercial area with a supermarket, hairdresser , pharmacy, bars and restaurants, Lady Elizabeth International School and a diverse sports offer with tennis and paddle courts, hiking trails, equestrian centre, without forgetting Moraig Beach with beach bars and Llebeig and Los Tiestos coves, coves of Great beauty and charm. And all the catering and leisure offer of Benitachell and the municipalities of Xàbia (just 7 km away) and Teulada-Moraira (just 4 km away), all of them tourist municipalities of recognized international prestige, and at an equidistant distance from Alicante and Valencia city.



VIEWS

- Panoramic views

**GARDEN AND
TERRACES**

- Open terrace
- Private garden

EXTRA

- Reinforced door

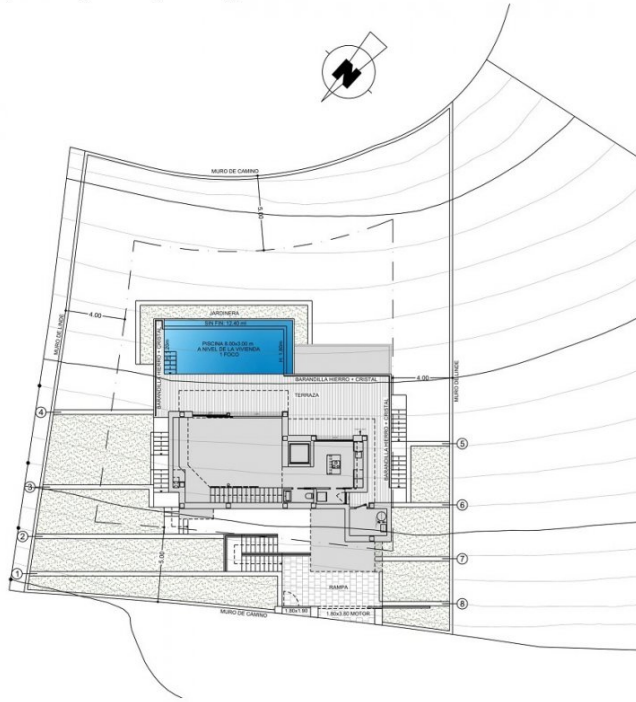




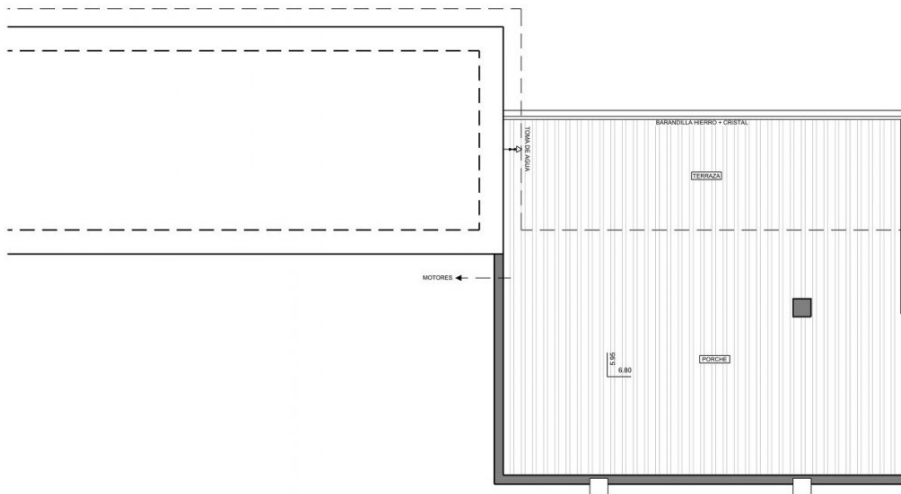


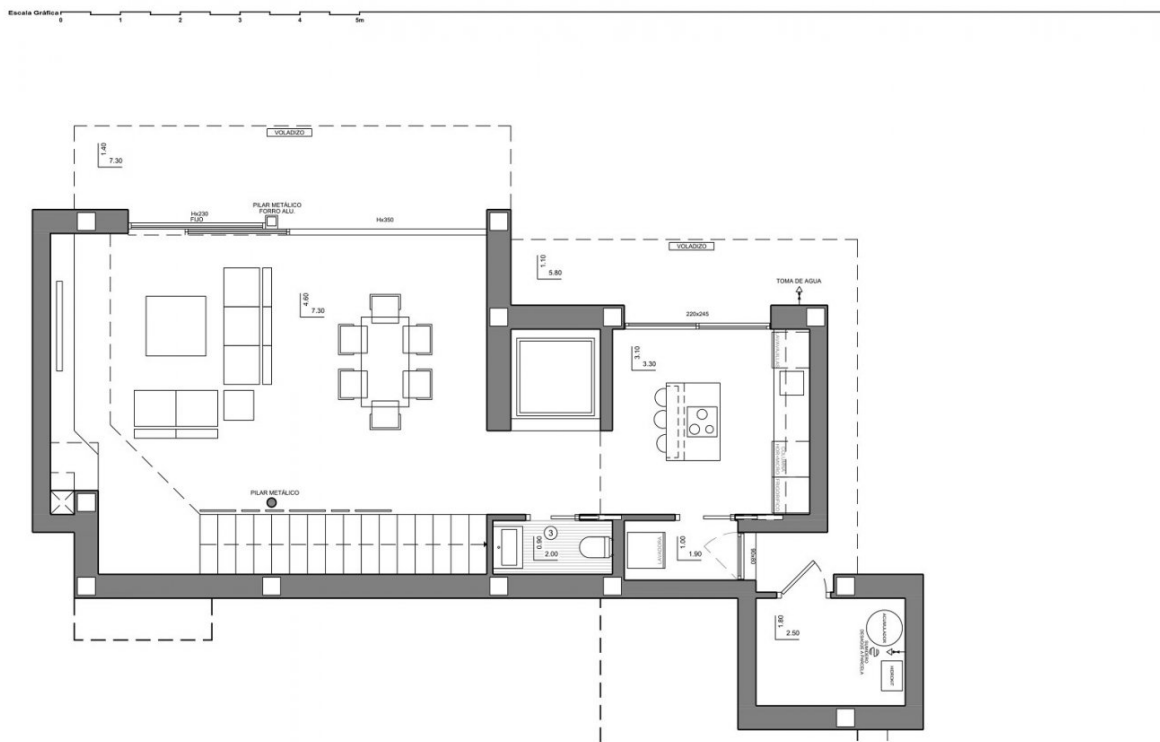
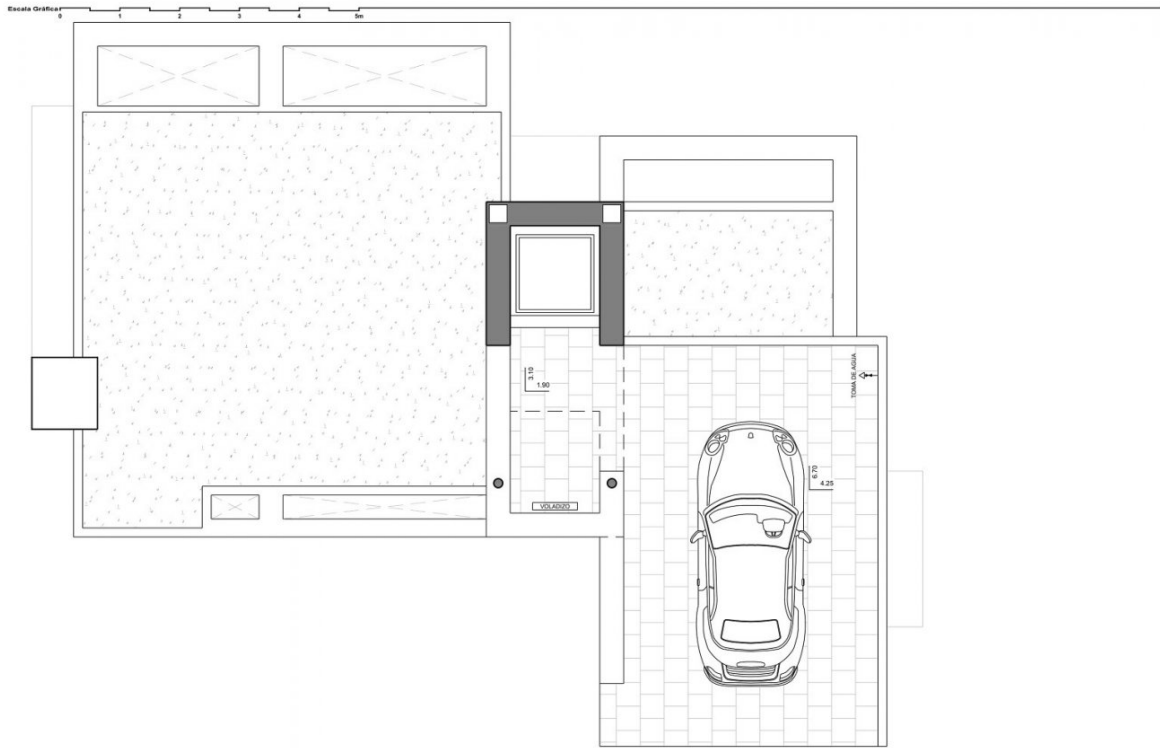


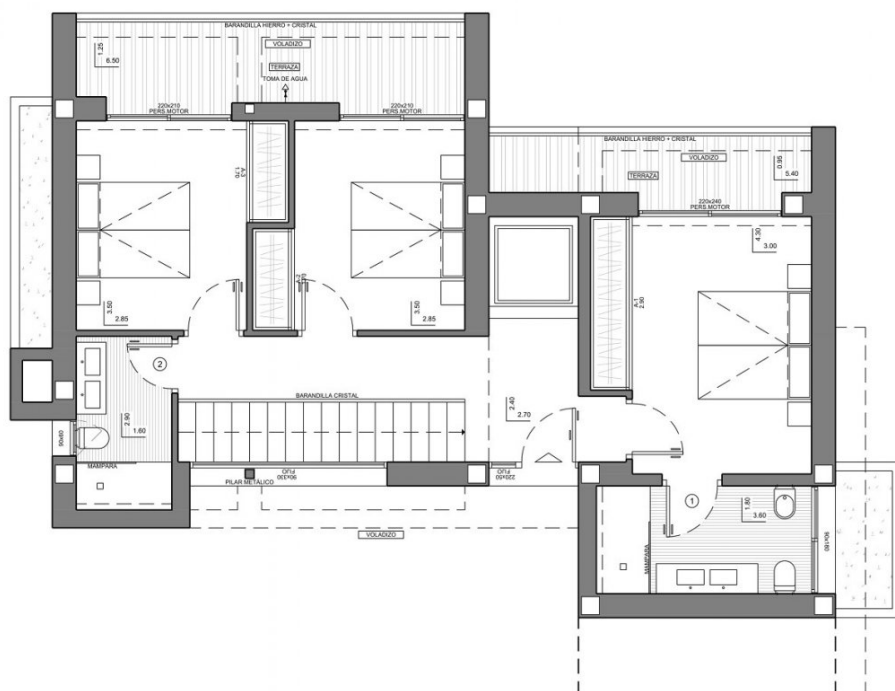
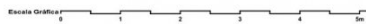
Escala Gráfica 0 5 10 15 20m



Escala Gráfica 0 1 2 3 4 5m







"OUR EXPERIENCE IS YOUR GUARANTEE"