



REF: # 10537

ORIHUELA COSTA (LAS COLINAS GOLF CLUB )



#### INFO

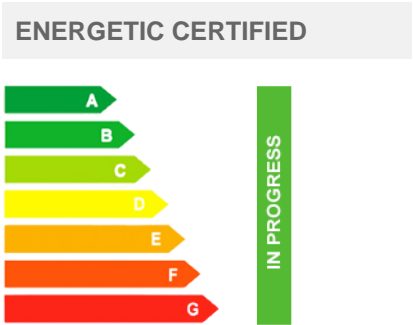
PRICE:	575.000 €
PROPERTY TYPE:	Apartment
CITY:	Orihuela Costa (Las Colinas Golf Club )
BEDROOMS:	2
Bathrooms:	2
Build ( m2 ):	101
Plot ( m2 ):	-
Terrace ( m2 ):	-
Year:	-
Floor:	-
Old price	-



#### DESCRIPTION

**NEW BUILD RESIDENTIAL COMPLEX IN LAS COLINAS GOLF** New Build developments consists of 15 luxury apartments with huge terraces overlooking the surrounding natural green area. We have made a combinations of modern and traditional Mediterranean Architecture. Our idea from the beginning has been to make the apartments, with a material description including amongst others, underfloor heating with water, quooker tap, air renewal system, sound reducing ceilings, laquered kitchens, smart home system and much more. When taking the privileged location and views into consideration we believe that complex offers the ideal conditions to meet the criteria of clients with exquisite taste. The first and second floors consists of 8 apartments: 6 apartments with 3 bedrooms, 3 bathrooms and a guest toilet and 2 apartments with 2 bedrooms and 2 bathrooms. All apartments on the first floor have big terraces with stunning views. On Las Colinas Golf [amp;] Country Club

you will furthermore find a wide variety of amenities for the property owners such as tennis, padel-tennis, fitness, massage, golf, trekking and much more. Inside Las Colinas Golf [amp;] Country Club you will also find a number of restaurants as well as a minimarket with fresh baked bread and much more. You will enjoy 200,000 square meters of beautiful Mediterranean landscapes and you will be able to make scenic walks through the lush indigenous, native flora and the extensive fields of orange and lemon groves. Complex located 40 minutes from Alicante airport and 1 hour Murcia - Corvera airport.



**VIEWS**

- Panoramic views

**GARDEN AND  
TERRACES**

- Open terrace

**EXTRA**

- Reinforced door
- Storage room

## PROPERTY GALLERY











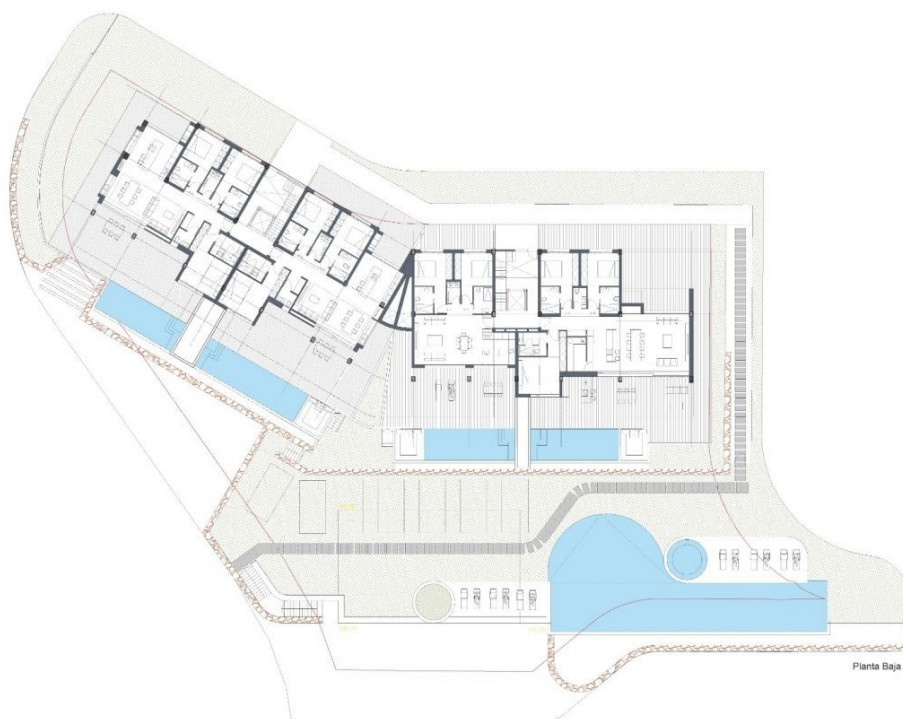
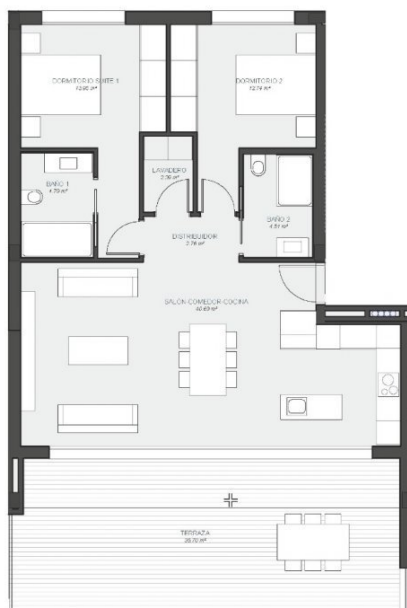


## ESC. B - PLANTA 1ª

	ESC A			ESC B		
P03	13	14	15			
P02	09	10	11	12		
P01	05	06	07	08		
P00	01	02	03	04		
S01	PARKING					

Sup. construida vivienda: 101,50 m<sup>2</sup>  
 Sup. terraza cubierta: 35,00 m<sup>2</sup>  
 Sup. terraza descubierta: 6,00 m<sup>2</sup>  
 SUPERFICIE TOTAL: 142,50 m<sup>2</sup>  
 Piscina: ---

Escala: 1:75







***"OUR EXPERIENCE IS YOUR GUARANTEE"***