



REF: # 10318

COSTA MURCIA



INFO

PRICE: 350.000 €

PROPERTY TYPE: Villa

CITY: Costa Murcia

BEDROOMS: 3

Bathrooms: 2

Build (m2): 146

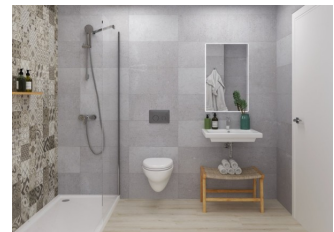
Plot (m2): 365

Terrace (m2): 20

Year:

Floor: -

Old price -



DESCRIPTION

EXCLUSIVE NEW BUILD VILLA, DETACHED, IN FORTUNA, MURCIA, with private garden and pool. This 146m2 detached villa is built over 2 floors on a plot of 365m2, it consists of 3 bedrooms, 2 bathrooms, 2 dressing rooms, open plan kitchen with the lounge area, garage, private garden with swimming pool. The town of Fortuna is less than 3km away for day to day shopping and the city of Murcia is 25km away where there is a wide range of gastronomic and leisure facilities. The climate on the Costa Cálida, often considered the best in Europe, makes possible a very sociable and healthy lifestyle, outdoors, marked by fantastic sports and leisure facilities, with exciting and cosmopolitan tourist cities, which stand out for the provision of top class services, some of them exclusive, considered true luxury. The Costa Cálida of Murcia has more than 300 days of sunshine a year. In addition to the golf courses and marinas that you can enjoy all along the coast, the area also offers the possibility of skiing in the nearby Sierra Nevada, a paradise for winter sports lovers, with beautiful natural landscapes. The possibility to enjoy all kinds of cultural and leisure offerings of nearby capitals such as Murcia and

Cartagena . A paradise with excellent connections to the whole of Europe. Alicante-Elche and Murcias Corvera Airports located an hour away.



STYLE

- Modern

VIEWS

- Panoramic views

DISTANCE TO :

Beach : +10 Km

Airport: 60 Km

PARKING

Parking no Cars: 1

KITCHEN

- Open kitchen

GARDEN AND TERRACES

- Open terrace
- Private garden

EXTRA

- Reinforced door

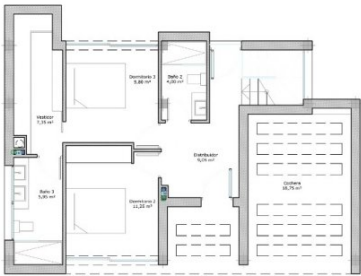




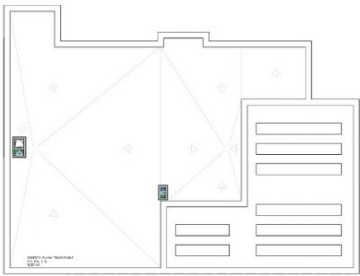








Planta baja



Planta cubierta



Planta semisótano

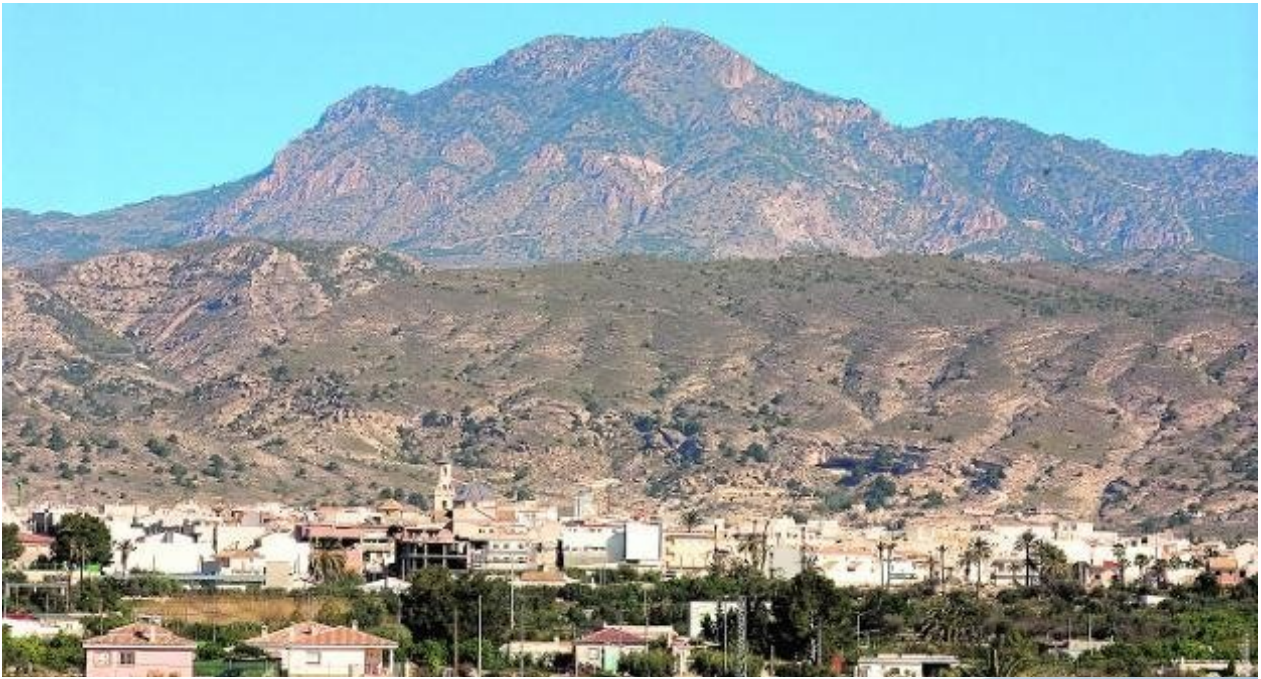
CUADRO DE SUPERFICIES VIVIENDA (planta baja)

| SUPERFICIE ÚTIL | |
|--------------------------|----------|
| Distribuidor | 0,28 m² |
| Baño 2 | 0,20 m² |
| Dormitorio 2 | 11,20 m² |
| Dormitorio 3 | 0,80 m² |
| Habitac. | 1,10 m² |
| Baño 3 | 0,80 m² |
| Superficie útil vivienda | 47,40 m² |
| Superficie construida | 67,30 m² |

CUADRO DE SUPERFICIES VIVIENDA (planta semisótano)

| SUPERFICIE ÚTIL | |
|-----------------------|----------|
| Distribuidor y acceso | 0,28 m² |
| Salón | 18,70 m² |
| Cocina | 10,70 m² |
| Habitac. | 10,70 m² |
| Dormitorio 1 | 11,45 m² |
| Habitac. | 0,80 m² |
| Baño 1 | 0,80 m² |
| Superficie útil | 73,70 m² |
| Superficie construida | 92,55 m² |

| | |
|-----------------------------|-----------|
| TOTAL SUPERFICIE ÚTIL | 120,10 m² |
| TOTAL SUPERFICIE CONSTRUIDA | 159,85 m² |



"OUR EXPERIENCE IS YOUR GUARANTEE"