



VIASS



iberiaproperty

REF: # 10267

CALPE/MORAIRA



INFO

PRICE:	257.000 €
PROPERTY TYPE:	Apartment
CITY:	Calpe/Moraira
BEDROOMS:	2
Bathrooms:	2
Build (m2):	61
Plot (m2):	-
Terrace (m2):	-
Year:	-
Floor:	-
Old price	-



DESCRIPTION

BEAUTIFUL APARTMENTS WITH SEA VIEWS IN CALPE 21 storey building with 1 and 2 bedroom apartments in Calpe. Due to its location, you will enjoy wonderful views of the Levante Beach and the Peñon de Ifach, easy access to the beaches and the promenade which is only a few metres away, as well as access to a variety of services that Calpe offers, such as supermarkets, restaurants, pharmacy and shops among others. Apartments with 1 and 2 bedrooms fully furnished, an equipped bathrooms, an open and equipped kitchen and living-dining room and terraces which offers magnificent sea views. You can also contemplate beautiful views of Las Salinas. Parking spaces available at an extra cost. In its common areas it has a swimming pool for adults and children and jacuzzi. An incredible opportunity for lovers of the sea. Calpe, one of the towns of La Marina Alta, lies on the northern coast of the province of Alicante, surrounded by the towns of Altea, Benidorm, Teulada-Moraira, Benissa. Calpe has a wonderful mixture of old Valencian culture and modern tourist facilities. It is a great base from which to explore the local area or enjoy the many local beaches. Calpe alone has three of the most

beautiful sandy beaches on the coast. Calpe also has two Sailing Clubs: Real Club Náutico de Calpe and Club Náutico de Puerto Blanco. Fishing village of Calpe now transformed into a tourist magnet, the town sits in an ideal location, easily accessed by the A7 motorway and the N332 that runs from Valencia to Alicante; its approximately 1 hour drive from the airport at Alicante and 1,5 hours to Valencias airport.



VIEWS

- Panoramic views

FURNITURE

- Furnished

**GARDEN AND
TERRACES**

- Open terrace

HEATING

- Central gas heating

EXTRA

- Reinforced door



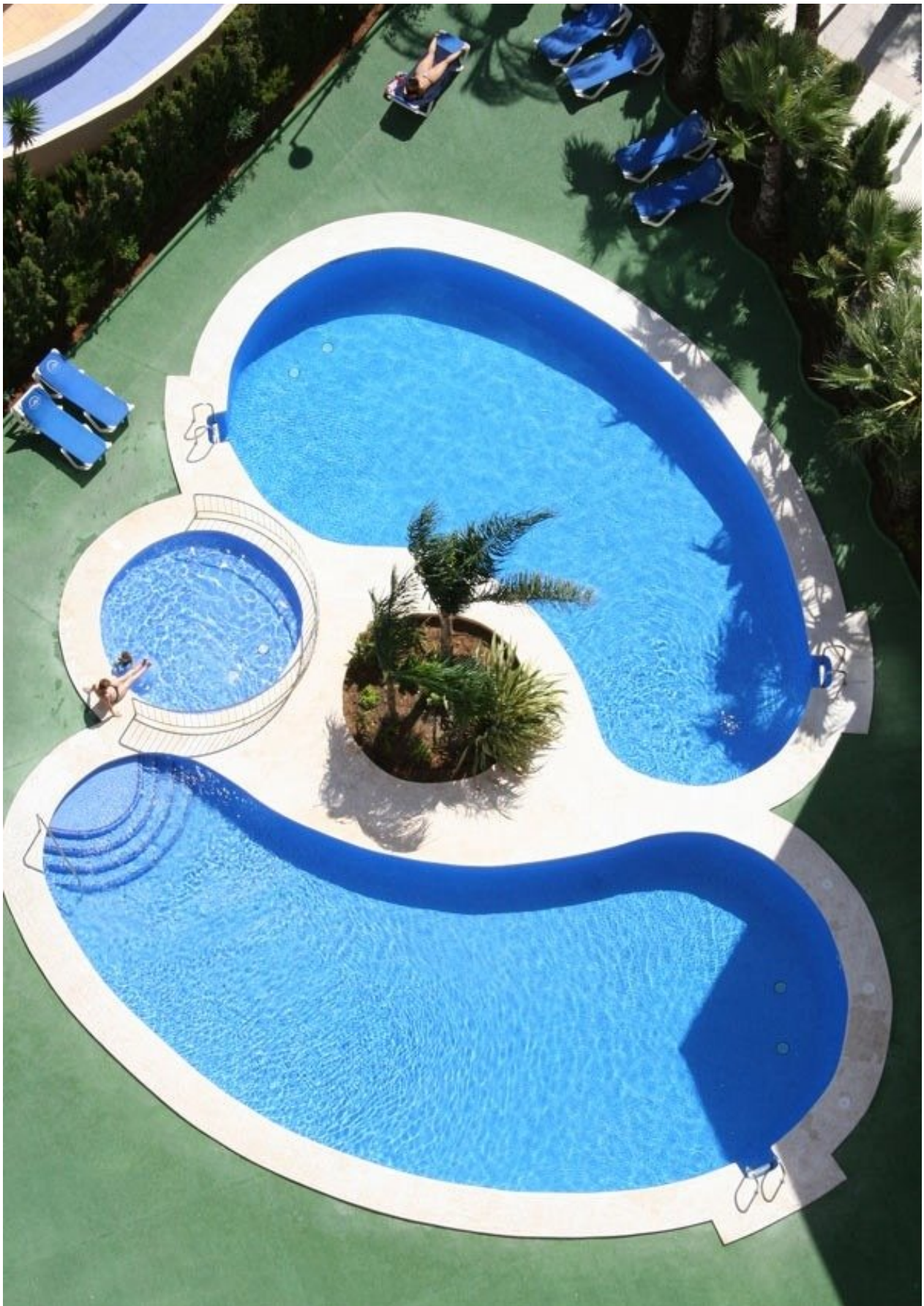












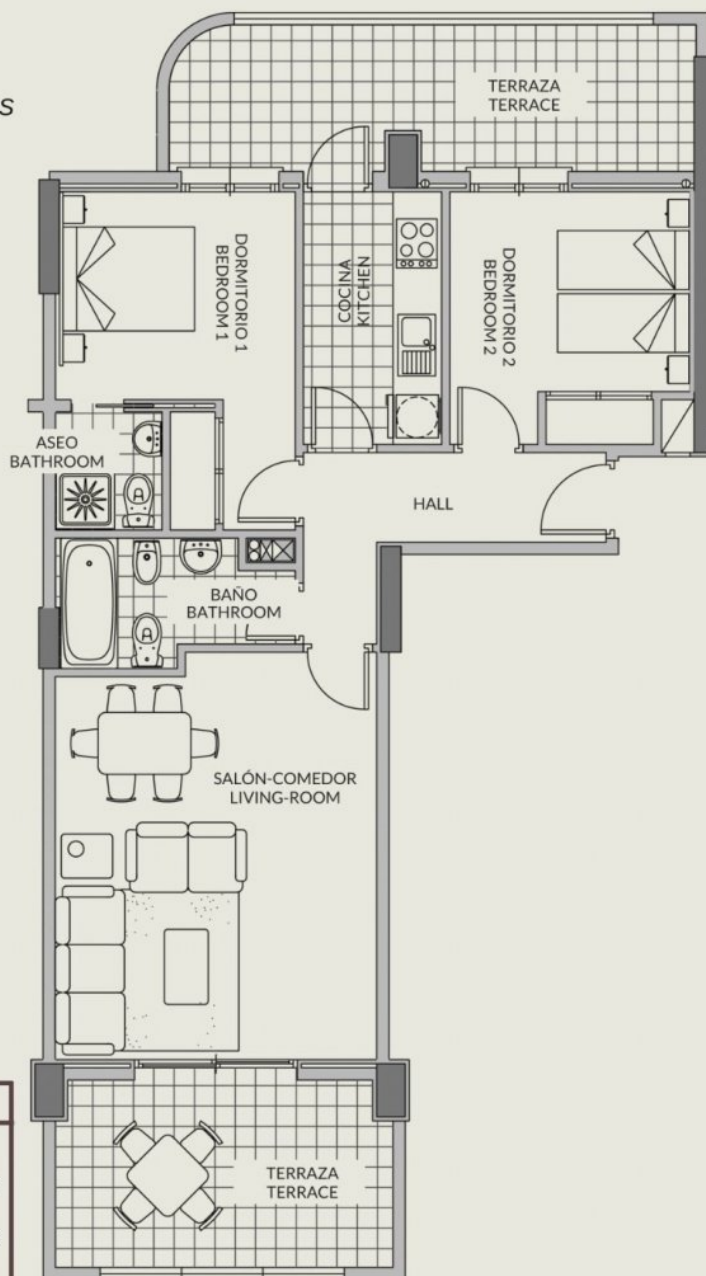






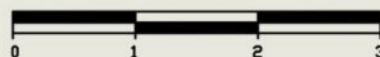
A

APARTAMENTO / APARTMENT
2 DORMITORIOS / 2 BEDROOMS
PLANTAS 1ª - 19ª / 1st - 19th FLOORS
ESCALERA 2 / STAIR 2



SUPERFICIES / SURFACES

Superficie construida	
<i>Builded surface</i>	61m ²
Terraza cubierta	
<i>Covered terrace</i>	24,15m ²
Elementos comunes	
<i>Communal areas</i>	12,48m ²
SUPERFICIE TOTAL	
TOTAL AREA	97,63m²



"OUR EXPERIENCE IS YOUR GUARANTEE"