



REF: # 10243

CALPE/MORAIRA



#### INFO

PRICE: 1.695.000 €

PROPERTY TYPE: Villa

CITY: Calpe/Moraira

BEDROOMS: 4

Bathrooms: 4

Build ( m2 ): 346

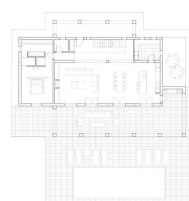
Plot ( m2 ): 13.000

Terrace ( m2 ): -

Year: -

Floor: -

Old price -



ARCHITECT: J. GARCIA

#### DESCRIPTION

**NEW BUILD VILLA IN MORAIRA WITH THE SEA VIEWS** New Build villa in Moraira with private pool and sea views. On the ground floor we find a large living-dining area and open plan kitchen, master bedroom with walking wardrobe and bathroom, front terrace with access to the pool. On the first floor is 3 bedrooms with fitted wardrobes, 3 bathrooms en suite. As well here you have basement of 81m2 with wine cellar. Villa will be build using high quality materials. The kitchen will be chosen by the client, kitchen cabinets, worktop and appliances. Air conditioning with climate control system (condense) in the living rooms and bedrooms. Mitsubishi brand. The swimming pool will be built with an outdoor shower (hot/cold water connection). Automatic entrance gate for the cars with remote control and automatic pedestrian door. Garden to be chosen by the client. Moraira is a small town with with good restaurants, bars and plenty of supermarkets around. There is a very pleasant beach right next to town that is great for families. The seafront offers tremendous views of Penon Ifach across the bay in Calpe. The coast road getting there is well worth doing with some spectacular views. Moraira situated about 1 hour

15 minutes North up the A7 from Alicante airport its fairly easy to get to.  
It's about the same distance or a little less South from Valencia airport.



**VIEWS**

- Panoramic views

**GARDEN AND  
TERRACES**

- Open terrace
- Private garden

**EXTRA**

- Reinforced door

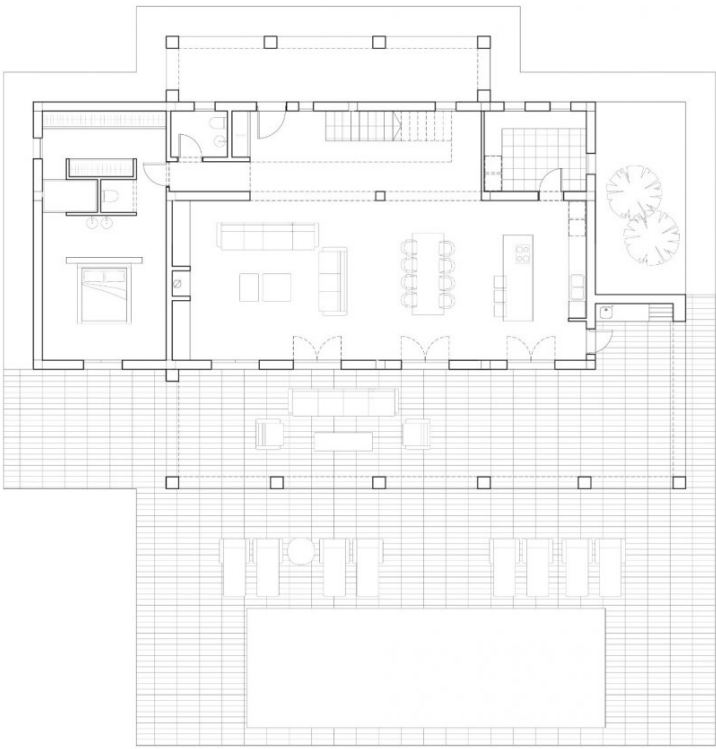








Superficies	Construidas
Planta Baja	
Vivienda	168.35 m2
Porche 1	23.84 m2
Porche 2	77.07 m2
Terraza	147.05 m2
Piscina	48.00 m2
Acera	43.63 m2
Planta Alta	
Vivienda	97.00 m2
Planta Sótano	
Vivienda	81.54 m2
Bodega	12.60 m2

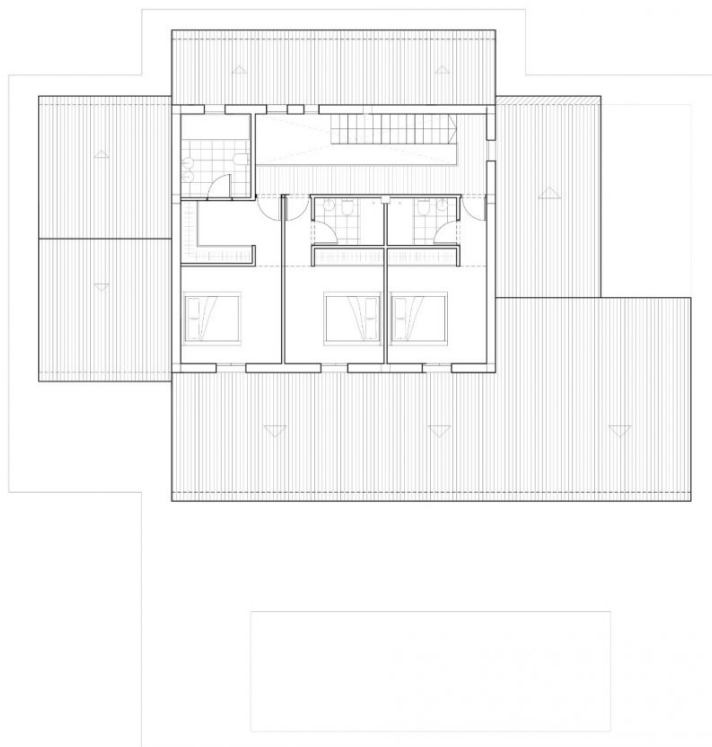


PLANTA BAJA



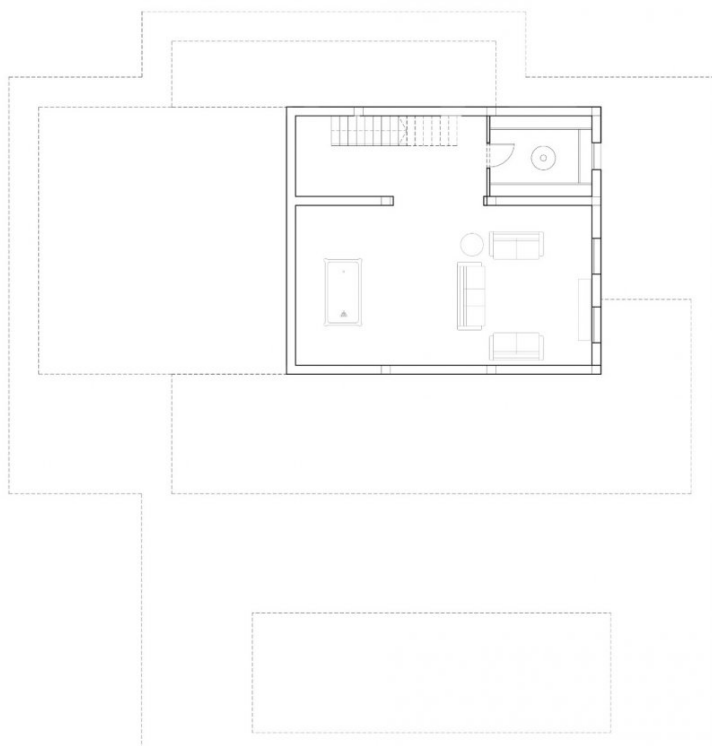
0 1 2 3 4 5 6 7 8 9 10 m E: 1/100

Superficies	Construidas
Planta Baja	
Vivienda	168.35 m <sup>2</sup>
Porche 1	23.84 m <sup>2</sup>
Porche 2	77.07 m <sup>2</sup>
Terraza	147.05 m <sup>2</sup>
Piscina	48.00 m <sup>2</sup>
Acera	43.63 m <sup>2</sup>
Planta Alta	
Vivienda	97.00 m <sup>2</sup>
Planta Sótano	
Vivienda	81.54 m <sup>2</sup>
Bodega	12.60 m <sup>2</sup>

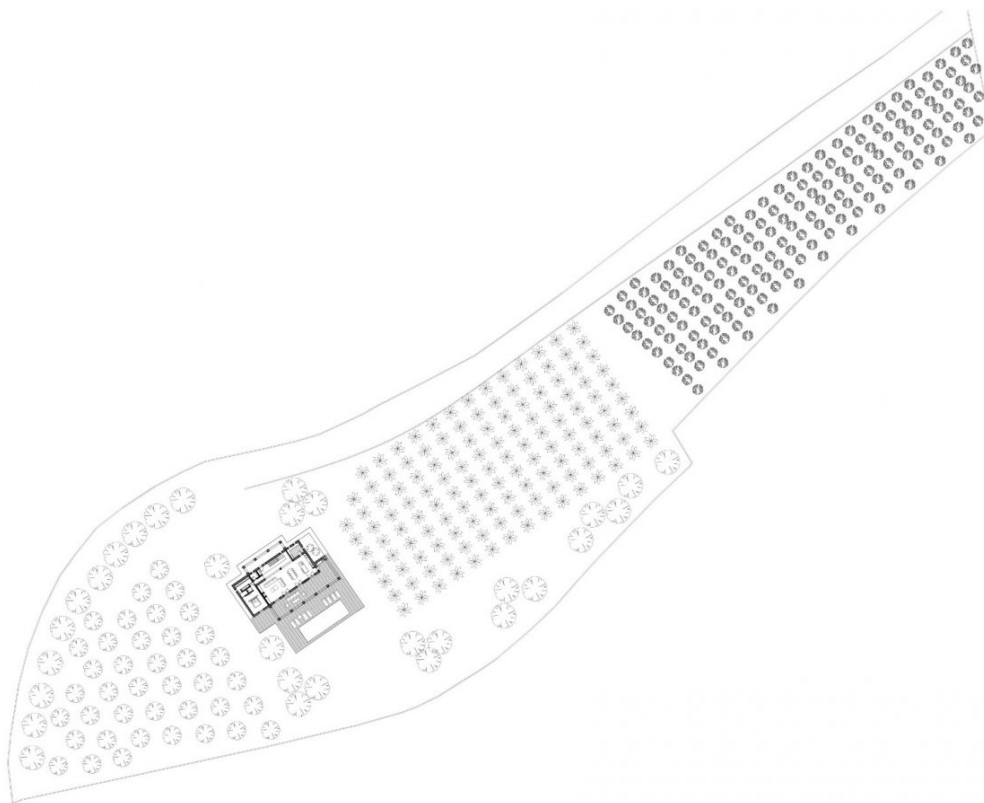


PLANTA ALTA

Superficies	Construidas
Planta Baja	
Vivienda	168.35 m <sup>2</sup>
Porche 1	23.84 m <sup>2</sup>
Porche 2	77.07 m <sup>2</sup>
Terraza	147.05 m <sup>2</sup>
Piscina	48.00 m <sup>2</sup>
Acera	43.63 m <sup>2</sup>
Planta Alta	
Vivienda	97.00 m <sup>2</sup>
Planta Sótano	
Vivienda	81.54 m <sup>2</sup>
Bodega	12.60 m <sup>2</sup>



PLANTA SOTANO



EMPLAZAMIENTO  
E: 1/700

**"OUR EXPERIENCE IS YOUR GUARANTEE"**