



REF: # 10155

BENIDORM



INFO

PRICE: 1.650.000 €

PROPERTY TYPE: Penthouse

CITY: Benidorm

BEDROOMS: 3

Bathrooms: 2

Build (m2): 297

Plot (m2): -

Terrace (m2): -

Year: -

Floor: -

Old price -



DESCRIPTION

FIRST LINE OF BEACH IN BENIDORM AND WITH PRIVATE POOL !!!
Located on the 1st line of Playa Poniente in Benidorm. With stunning views of the entire bay. Penthouse, equipped with 3 bedrooms, 2 bathrooms, living room, kitchen, large terrace and private pool. Equipped with air conditioning, underfloor heating, elevator, garage, storage room, electrical appliances. It has all the services around: supermarkets, restaurants, pharmacies, banks. Distance to the airport 40 km and to the Golf 10 km. The city of Alicante is 30km away.

ENERGETIC CERTIFIED



VIEWS

- Panoramic views
- Sea views

PARKING

Garage no Cars : 1

GARDEN AND TERRACES

- Open terrace
- BBQ/grill
- Private garden

HEATING

- Central gas heating
- Radiators

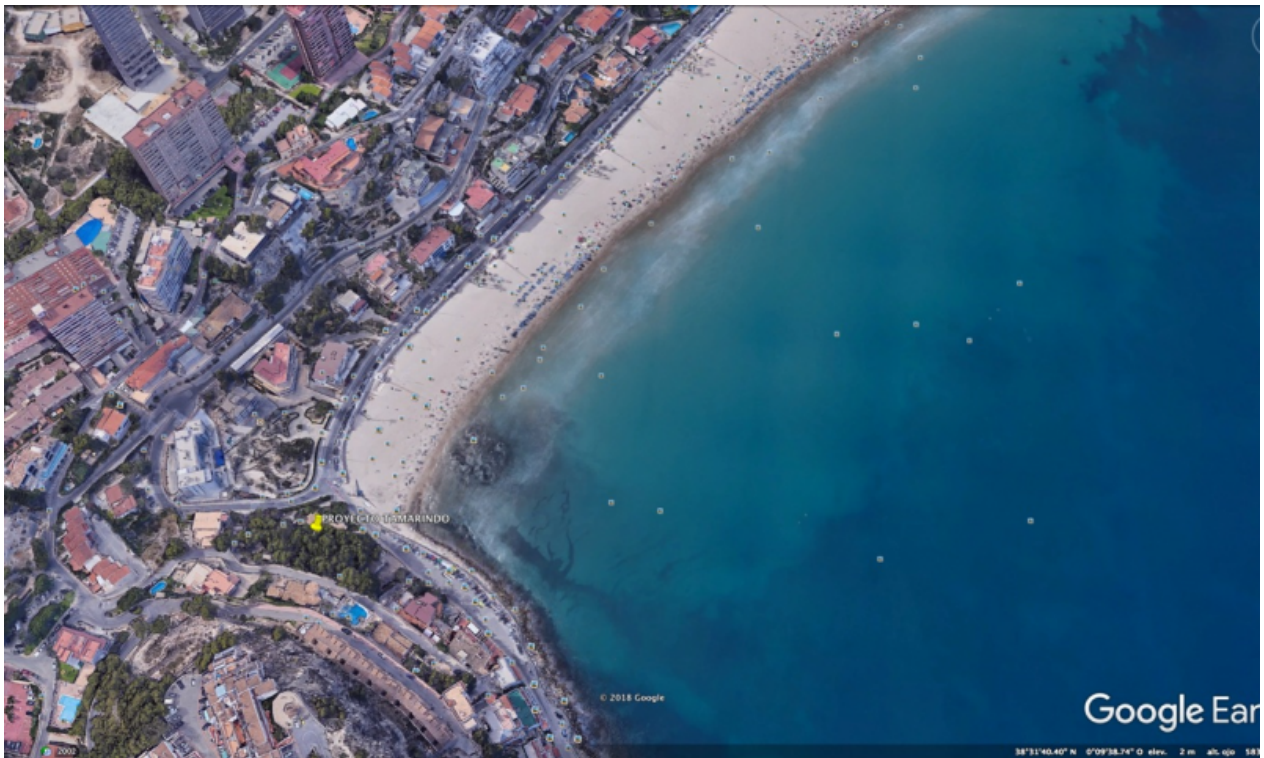
EXTRA

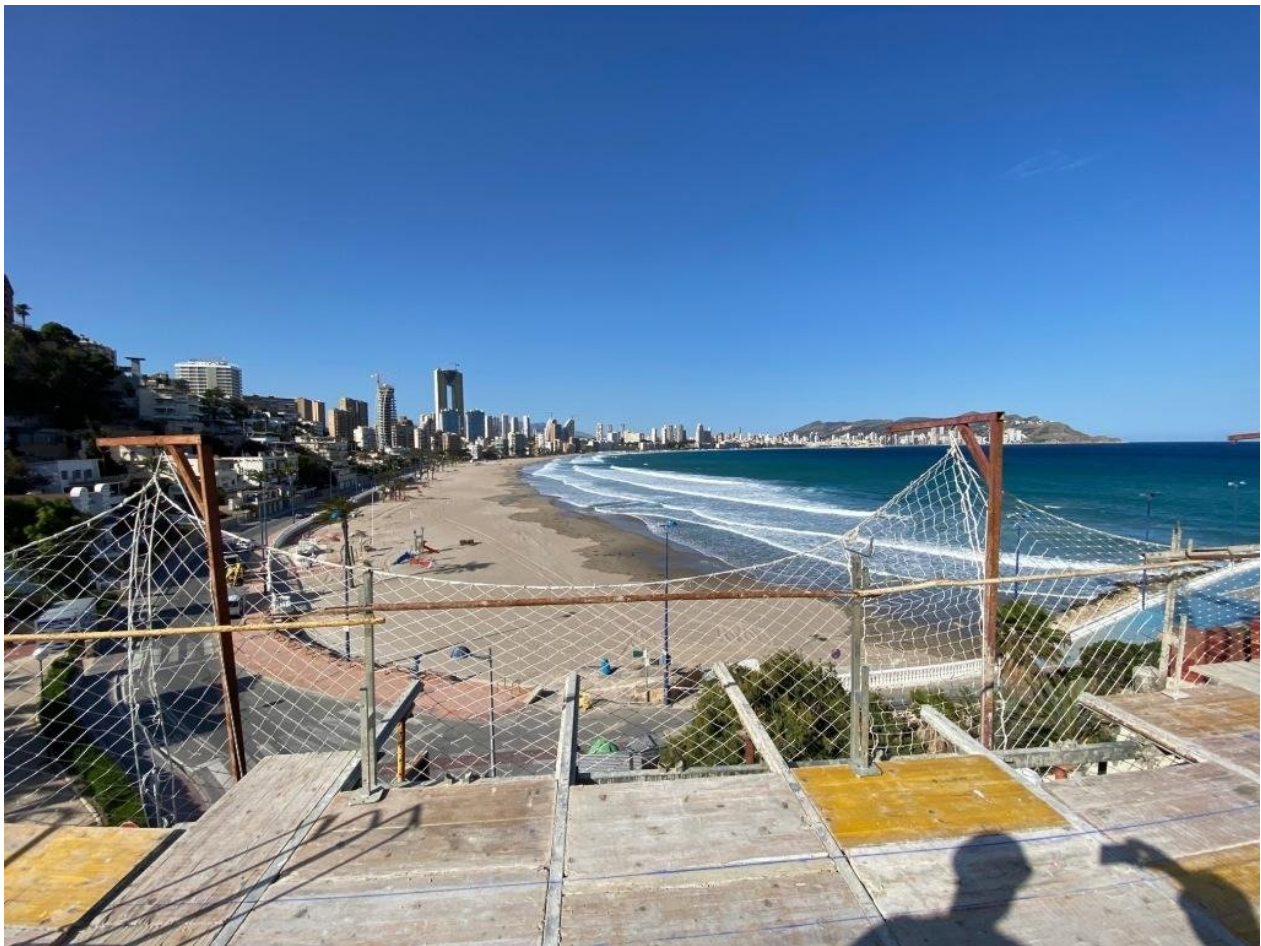
- Reinforced door
- Storage room





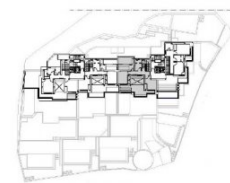
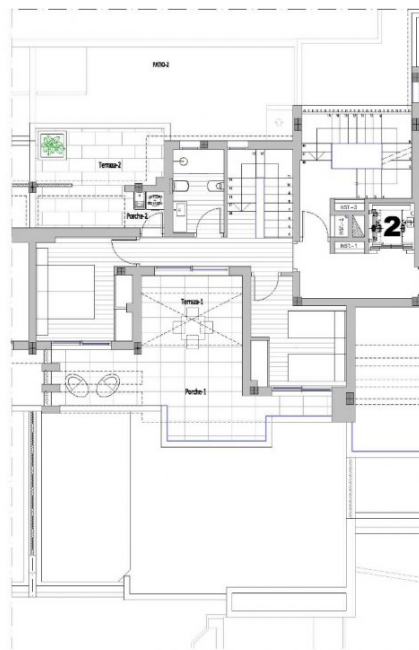
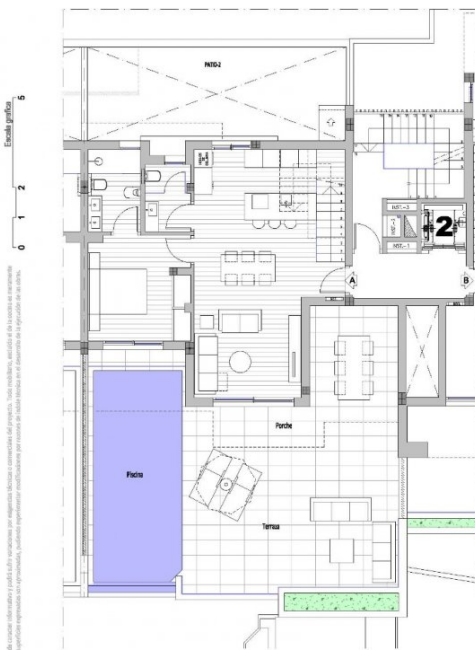




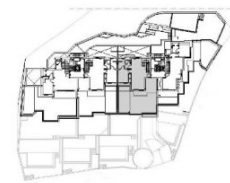


Portal 2
Plantas 1ª y 2ª (Dúplex)
Tipo A

PORTAL-2: DUPLEX-A (Plantas 1ª y 2ª)	
PLANTA PRIMERA	59,22 m²
PLANTA SEGUNDA	44,59 m²
SUPERFICIE VIVIENDA CUBIERTA	103,81 m²
Porchos cubiertos en Pl. Primera	16,17 m²
Porchos cubiertos en Pl. Segunda	10,61 m²
TOTAL SUPERFICIE CUBIERTA	130,48 m²
Terraza Planta Primera	42,90 m²
Límite de agua piscina	20,91 m²
Terrazas Planta Segunda	27,11 m²
TOTAL SUPERFICIE DESCUBIERTA	90,92 m²



Seguiente: Planta de estudio
Vivienda Duplex, planta ALTA



Seguiente: Planta de estudio
Vivienda Duplex, planta BAJA

8 VIVIENDAS Y GARAJES

"OUR EXPERIENCE IS YOUR GUARANTEE"