



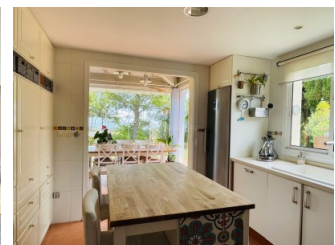
REF: # 9429

LA NUCIA/POLOP



INFO

PRICE:	279.000 €
PROPERTY TYPE:	Townhouse
CITY:	La Nucia/Polop
BEDROOMS:	3
Bathrooms:	3
Build (m2):	173
Plot (m2):	277
Terrace (m2):	-
Year:	-
Floor:	3
Old price	-



DESCRIPTION

The townhouse consists of 3 floors and contains on the ground floor a living room with access to a large terrace. Kitchen with access to a covered and glazed terrace that is used as a winter garden. 1 bedroom with fitted wardrobes. There is also a bathroom on this floor. On the second floor there are 2 bedrooms both with fitted wardrobes. There are also 2 bathrooms on the second floor. One bedroom has direct access to the bathroom. There is also direct access to a beautiful private terrace. In the basement there is a large basement living room and an office that can also be used for bedrooms / guest rooms. This property has 2 private parking spaces. Inside the area there is a very large and beautiful communal area with a nicely landscaped garden and swimming pool. All the homes in this urbanization are located inside a closed area with electric entrance gate.

ENERGETIC CERTIFIED



<div>STYLE</div> <div><ul style="list-style-type: none">Mediterranean</div>	<div>VIEWS</div> <div><ul style="list-style-type: none">Sea viewsMountain views</div>	<div>AIRCONDITIONING</div> <div><ul style="list-style-type: none">Central airconditioning</div>	<div>DISTANCE TO :</div> <div><div>Beach : +10 Km</div><div>Airport: 50 Km</div><div>Town center : 2 Km</div></div>
<div>ORIENTATION</div> <div><div>South east</div></div>	<div>PARKING</div> <div><div>Garage no Cars : 1</div><div>Parking no Cars: 2</div></div>	<div>MAIN LIVING AREA</div> <div><ul style="list-style-type: none">OfficeBathroom en-suite</div>	<div>FLOORING</div> <div><ul style="list-style-type: none">Tile floors</div>
<div>KITCHEN</div> <div><ul style="list-style-type: none">Closed kitchenEquipped kitchen</div>	<div>GARDEN AND TERRACES</div> <div><ul style="list-style-type: none">Covered terraceOpen terraceExterior lightsPlay GroundLandscapedFencedStone wallsElectric gatePrivate gardenCommunal Garden</div>	<div>HEATING</div> <div><ul style="list-style-type: none">Central electric heatingFireplace wood</div>	<div>ENERGETIC CERTIFIED</div> <div><div><div>A</div><div>B</div><div>C</div><div>D</div><div>E</div><div>F</div><div>G</div></div><div><div>Double glazed windows</div><div>Double glazed doors</div><div>Reinforced door</div><div>Wardrobes</div></div><div>IN PROGRESS</div></div>

"OUR EXPERIENCE IS YOUR GUARANTEE"