



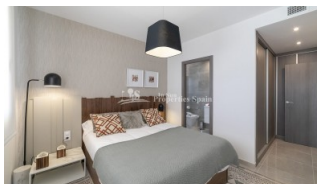
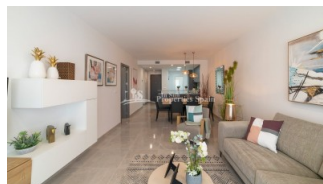
REF: # 8917

ORIHUELA COSTA (VILLAMARTIN LOS DOLSES )



#### INFO

PRICE:	194.000 €
PROPERTY TYPE:	Apartment
CITY:	Orihuela Costa (Villamartin Los Dolles )
BEDROOMS:	2
Bathrooms:	1
Build ( m2 ):	76
Plot ( m2 ):	-
Terrace ( m2 ):	17
Year:	
Floor:	-
Old price	-




#### DESCRIPTION

KEY READY apartments available at this exclusive development in LOS DOLSES - VILLAMARTIN area. Modern 2 and 3 bedroom apartments with 1 or 2 bathrooms boast cubic-shaped terraces to give you extra privacy from your neighbours. Ground floor homes feature a sheltered patio terrace and an open-air garden to sunbath. Those on the first, second and third floors enjoy views with a wider projection towards the coast. Top floor residents not only have a spacious terrace, but also a rooftop terrace for an outdoor lounge, scanning Orihuela Costa's skyline. Prices start from 172.000 € for a 2 bedroom 1 bathroom apartment or 176.000€ for 2 bedroom 2 bathroom. 3 bedroom apartments are also available. Each apartment comes with air conditioning pre-installed as well as underfloor heating in the bathroom. You'll also have an exterior storage room to store your bulky belongings for a tidier home. With your own bike station and car park you come and go with ease and security. Large cubic terraces dominate this complex, with easy access to the nearby beach. Its modern apartments encircle a large swimming pool for

adults, adjoining the kids pool. You can also take a refreshing dip in one of the two whirlpools, each with capacity for 4-6 people. Surrounding the decked perimeter of the pools are green lawns and gardens for sunbathing. Don't miss our special promotion. Buy now your new Spanish property fully equipped! Also a great facility available to buyers if you are looking to rent out a property is that the developer has an exclusive rentals department to assist in finding rentals for your property but also looks after the tourist licence application, cleaning and laundry.



STYLE	VIEWS	AIRCONDITIONING	DISTANCE TO :
<ul style="list-style-type: none"> <li>Modern</li> <li>Contemporary</li> </ul>	<ul style="list-style-type: none"> <li>Panoramic views</li> </ul>	<ul style="list-style-type: none"> <li>Central airconditioning</li> </ul>	Beach : 2 Km Airport: 40 Km Town center : 1 Km
ORIENTATION	FURNITURE	PARKING	TAX
South East West	<ul style="list-style-type: none"> <li>Not furnished</li> </ul>	Parking no Cars: 1	Community : 1.200 € I.B.I : 300 €
KITCHEN	GARDEN AND TERRACES	HEATING	ENERGETIC CERTIFIED
<ul style="list-style-type: none"> <li>Open kitchen</li> </ul>	<ul style="list-style-type: none"> <li>Open terrace</li> <li>Palm trees</li> <li>Play Ground</li> <li>Communal Garden</li> </ul>	<ul style="list-style-type: none"> <li>Floor heating bathrooms</li> </ul>	 <p>             A for jacuzzi              B wardrobes              C              D              E              F              G           </p>

**"OUR EXPERIENCE IS YOUR GUARANTEE"**