



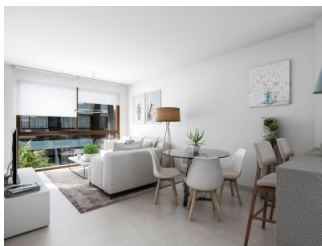
REF: # 7002

COSTA MURCIA (SAN PEDRO DEL PINATAR)



INFO

| | |
|-----------------|--------------------------------------|
| PRICE: | 135.000 € |
| PROPERTY TYPE: | Apartment |
| CITY: | Costa Murcia (San Pedro del Pinatar) |
| BEDROOMS: | 2 |
| Bathrooms: | 2 |
| Build (m2): | 66 |
| Plot (m2): | - |
| Terrace (m2): | 33 |
| Year: | 2020 |
| Floor: | - |
| Old price | - |



DESCRIPTION

New Build Bungalows located just 500m from the centre of LO PAGAN, overlooking the Salinas de San Pedro and only 3km FROM THE BEACH OF EL MOJON. These 66m2 homes are built on the ground floor with private 33m2 terrace/garden area (from €135,000) or the top floor with 52m2 solarium (from €155,000). They are set around a community swimming pool with communal gardens. They boast an open plan living concept incorporating the with living andd dining area. There are two bedrooms and two bathrooms. 80l aerothermic water heater and pre-installation of AC. Lo Pagan, famous for its mudbaths is situated on the north shore of the Mar Menor and has merged with San Pedro del Pinatar to become one big town. It has a beautiful beach, promenade and small marina. The location of these Villas offers something for everyone; For shopping you are just over 5 minutes from Dos Mares commercial centre and for Golf enthusiasts you are just 15 minutes from

Lo Romero Golf. Just 30 minutes from Corvera Airport.



| STYLE | VIEWS | AIRCONDITIONING | DISTANCE TO : |
|---|--|--|--|
| <ul style="list-style-type: none"> Modern Contemporary | <ul style="list-style-type: none"> Panoramic views | <ul style="list-style-type: none"> Central airconditioning | Beach : 3 Km Airport: 40 Km Town center : 500 m |
| ORIENTATION | FURNITURE | PARKING | MAIN LIVING AREA |
| South East West | <ul style="list-style-type: none"> Not furnished | Parking no Cars: 1 | <ul style="list-style-type: none"> Bathroom en-suite |
| FLOORING | KITCHEN | GARDEN AND TERRACES | ENERGETIC CERTIFIED |
| <ul style="list-style-type: none"> Tile floors Stone floors | <ul style="list-style-type: none"> Open kitchen Equipped kitchen | <ul style="list-style-type: none"> Open terrace Fenced Stone walls Private garden Communal Garden | <div> <div> <div>A</div> <div>B</div> <div>C</div> <div>D</div> <div>E</div> <div>F</div> <div>G</div> </div> <div> <div> <ul style="list-style-type: none"> In wardrobes Reinforced door Double glazed windows </div> <div>IN PROGRESS</div> </div> </div> |

"OUR EXPERIENCE IS YOUR GUARANTEE"