



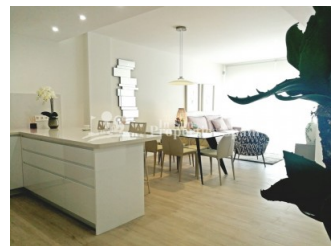
REF: # 6938

ORIHUELA COSTA (VILLAMARTIN LOS DOLSES)



INFO

PRICE:	250.000 €
PROPERTY TYPE:	Townhouse
CITY:	Orihuela Costa (Villamartin Los Dolses)
BEDROOMS:	3
Bathrooms:	2
Build (m2):	130
Plot (m2):	-
Terrace (m2):	70
Year:	2019
Floor:	-
Old price	-




DESCRIPTION

3 bedroom, 2 bathroom Triplex in LOS DOLSES, VILLAMARTIN within this popular south/west facing project. This is a beautiful KEY READY modern 130m2 property constructed with top quality materials. To the ground floor you have an open plan concept with lounge, dining area and modern fitted kitchen plus a double bedroom and guest toilet. There is also access to the 37'25m2 basement, which could be utilised as a games room or further living accommodation. To the first floor there are two further bedrooms and 2 bathrooms with access to the sunny 40m2 roof solarium. In addition to the 30m2 private terrace the community has a swimming pool and is gated. Walking distance to restaurants, bars and supermarkets and 3km to the sandy beaches of Orihuela Costa . Within a short drive you have access to a number of championship golf courses including Villamartin, Campoamor, Las Ramblas and Las Colinas, With the new pedestrian alway you can now also access Zenia Boulevard

easily on foot. Just 50 mins from Alicante and Corvera Airport.



STYLE	VIEWS	DISTANCE TO :	ORIENTATION
<ul style="list-style-type: none"> Modern Contemporary 	<ul style="list-style-type: none"> Panoramic views 	Beach : 2 Km Airport: 50 Km Town center : 1 Km	South East West
FURNITURE	PARKING	FLOORING	KITCHEN
<ul style="list-style-type: none"> Not furnished 	Parking no Cars: 1	<ul style="list-style-type: none"> Tile floors Stone floors 	<ul style="list-style-type: none"> Open kitchen Equipped kitchen Granite countertop
GARDEN AND TERRACES	EXTRA	ENERGETIC CERTIFIED	
<ul style="list-style-type: none"> Covered terrace Open terrace Landscaped Stone walls Private garden Communal Garden 	<ul style="list-style-type: none"> Built in wardrobes Reinforced door Double glazed windows 	 <p>The image shows a vertical energy efficiency scale with seven levels, A through G, represented by horizontal bars of increasing length and changing colors from green at the top to red at the bottom. Level A is dark green, B is medium green, C is light green, D is yellow, E is orange-yellow, F is orange, and G is red. To the right of this scale is a vertical green bar with the text 'IN PROGRESS' written vertically inside it, positioned between levels D and E.</p>	

"OUR EXPERIENCE IS YOUR GUARANTEE"