



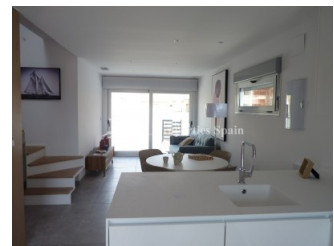
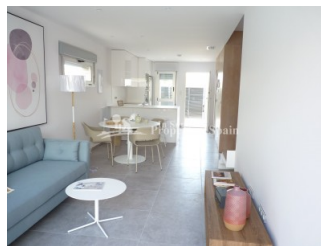
REF: # 6870

COSTA MURCIA (SANTIAGO DE LA RIBERA )



#### INFO

PRICE:	188.000 €
PROPERTY TYPE:	Townhouse
CITY:	Costa Murcia (Santiago de la Ribera )
BEDROOMS:	3
Bathrooms:	2
Build ( m2 ):	97
Plot ( m2 ):	-
Terrace ( m2 ):	39
Year:	-
Floor:	-
Old price	182.000 €

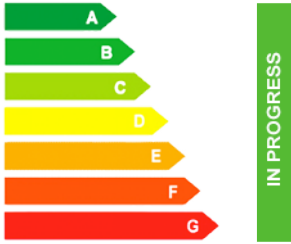


#### DESCRIPTION

Located a little over a 5 minute walk from the beaches of the Mar Menor and close to Dos Mares Commercial centre is this new development in SANTIAGO DE LA RIBERA. The development offers 3 bed 2 bath Townhouses of approx 97m2 (central or corner) in a lovely residential development with community swimming pool. The plots feature off street parking and ample outside space to entertain family and friends. Set over two floors the accommodation distributes as; Ground floor with open plan living/dining area, modern fitted kitchen, one bedroom with terrace and a bathroom. The first floor has two further bedrooms, one with balcony, a family bathroom and access to the 39'39m2 roof solarium. The community has nice gardens and a communal pool. The development is in a central location just 10 minutes from the centres of Lo Pagan and La Ribera, less than 10 minutes to the Marina of La Ribera, 10 minutes from Sporting facilities, 15 minutes from a number of prestigious Golf

Courses, 5 minutes from the famous Mud Baths, 15 minutes from the Train station at Balsicas with connections through to Madrid and 30 minutes from the Historic Cities of Murcia and Cartagena. Delivery December 2019.



STYLE	VIEWS	DISTANCE TO :	ORIENTATION
<ul style="list-style-type: none"> <li>Modern</li> <li>Contemporary</li> </ul>	<ul style="list-style-type: none"> <li>Panoramic views</li> </ul>	Beach : 500 m <hr/> Airport: 40 Km <hr/> Town center : 1 Km	South East West <hr/>
FURNITURE	PARKING	FLOORING	KITCHEN
<ul style="list-style-type: none"> <li>Not furnished</li> </ul>	Parking no Cars: 1 <hr/>	<ul style="list-style-type: none"> <li>Tile floors</li> </ul>	<ul style="list-style-type: none"> <li>Open kitchen</li> <li>Equipped kitchen</li> </ul>
GARDEN AND TERRACES	EXTRA	ENERGETIC CERTIFIED	
<ul style="list-style-type: none"> <li>Open terrace</li> <li>Stone walls</li> <li>Private garden</li> <li>Communal Garden</li> </ul>	<ul style="list-style-type: none"> <li>Built in wardrobes</li> <li>Reinforced door</li> <li>Double glazed windows</li> </ul>	 <p>The image shows a vertical energy efficiency scale with seven horizontal bars labeled A through G. The bars are colored in a gradient from green at the top to red at the bottom. A vertical green bar on the right side of the scale is labeled 'IN PROGRESS' vertically.</p>	

**"OUR EXPERIENCE IS YOUR GUARANTEE"**