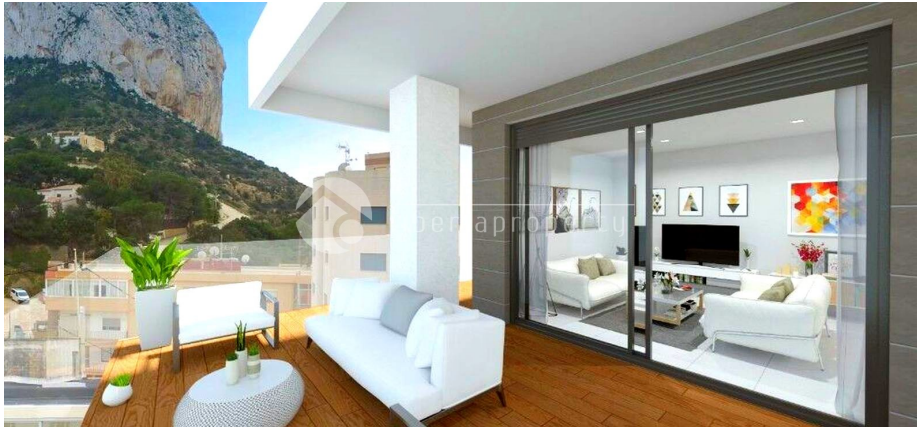




REF: # 6667

CALPE/MORAIRA (CALPE CENTRO)



#### INFO

PRICE:	205.000 €
PROPERTY TYPE:	Apartment
CITY:	Calpe/Moraira (Calpe centro)
BEDROOMS:	2
Bathrooms:	2
Build ( m2 ):	59
Plot ( m2 ):	-
Terrace ( m2 ):	10 + 12 + 9
Year:	2019
Floor:	-
Old price	-



#### DESCRIPTION

Complex of 37 apartments with 1 and 2 bedrooms and large terraces, a few meters from the beach of Levante. The apartments have an average surface of 65 m2 spread over 1 or 2 bedrooms and 1 or 2 complete bathrooms, equipped with a shower with rain effect and shower tray in natural stone. The living room opens directly onto the main terrace. Most models have several terraces, so even the bedrooms are connected to separate terraces equipped with an armored door, complete fitted wardrobes with upholstery and with sliding door, including upper cupboard. In the living room there is an electric blinds, in addition to the pre-installation of the air conditioning and dishwasher. TV connections in living room, bedroom and terrace. On top of the building, a chill-out zone of 150.94sqm is equipped with jacuzzi, to enjoy the exceptional view of the sea, the beach "Playa de la Fossa" and the Rock of Ifach. For all apartments it is possible to buy a parking space and a storage room

separately in the underground floor. The parking spaces will be provided with connection possibilities for charging electric cars. (optional connection at the request of the owner). The complex is just 150 meters from Levante Beach and 300 meters from the impressive Ifach Rock.



STYLE	VIEWS	AIRCONDITIONING	DISTANCE TO :
<ul style="list-style-type: none"> <li>Modern</li> </ul>	<ul style="list-style-type: none"> <li>Panoramic views</li> <li>Sea views</li> <li>Mountain views</li> </ul>	<ul style="list-style-type: none"> <li>Central airconditioning</li> </ul>	Beach : 50 m Airport: 70 Km Town center : 1 Km
ORIENTATION	FURNITURE	MAIN LIVING AREA	FLOORING
South	<ul style="list-style-type: none"> <li>Not furnished</li> </ul>	<ul style="list-style-type: none"> <li>Bathroom en-suite</li> </ul>	<ul style="list-style-type: none"> <li>Tile floors</li> <li>Marble floors</li> </ul>
KITCHEN	GARDEN AND TERRACES	HEATING	ENERGETIC CERTIFIED
<ul style="list-style-type: none"> <li>Open kitchen</li> <li>Equipped kitchen</li> </ul>	<ul style="list-style-type: none"> <li>Covered terrace</li> <li>Open terrace</li> <li>Exterior lights</li> <li>Stone walls</li> <li>Electric gate</li> <li>Communal Garden</li> </ul>	<ul style="list-style-type: none"> <li>Central electric heating</li> </ul>	<div> <div> <div>A</div> <div>B</div> <div>C</div> <div>D</div> <div>E</div> <div>F</div> <div>G</div> </div> <div> <div>           for jacuzzi            Built-in wardrobes            Reinforced door            Double glazed windows            Security            ...         </div> <div>IN PROGRESS</div> </div> </div>

"OUR EXPERIENCE IS YOUR GUARANTEE"