



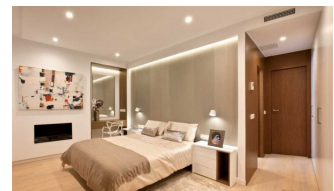
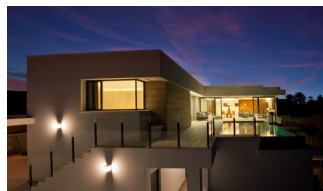
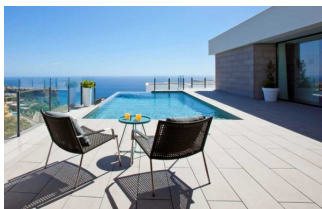
REF: # 6146

BENITACHELL



#### INFO

PRICE:	985.000 €
PROPERTY TYPE:	Villa
CITY:	Benitachell
BEDROOMS:	3
Bathrooms:	3
Build ( m2 ):	351
Plot ( m2 ):	929
Terrace ( m2 ):	-
Year:	-
Floor:	-
Old price	-



#### DESCRIPTION

The house has been conceived as the union of several open modules and joined by the outside area, creating a fusion between the interior and exterior, obtaining an open, bright and functional housing. Homes of more than 351m<sup>2</sup> built on plots of 929m<sup>2</sup> with fantastic sea views and unique sunrises. Distributed in two heights, the upper floor houses a module for the night area, with a large master bedroom with bathroom en suite and two other bedrooms separated by a bathroom that serves both. The day module houses the entrance hall, guest toilet, and the tandem formed by a large living room and kitchen that are integrated or separated, depending on the needs of each moment, through a mobile wall. Both modules converge in the outdoor area with the terrace and infinity pool as protagonists. On the ground floor we find a large space, of more than 68m<sup>2</sup>, destined to a guest apartment, or simply a leisure area, with a private terrace and an independent installation room. With parking space with pergola and storage.

#### ENERGETIC CERTIFIED



VIEWS

- Panoramic views
- Sea views

ENERGETIC CERTIFIED



***"OUR EXPERIENCE IS YOUR GUARANTEE"***