



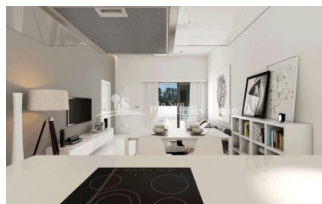
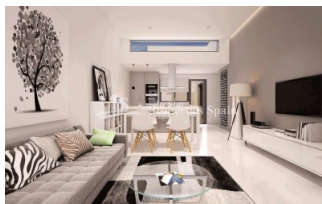
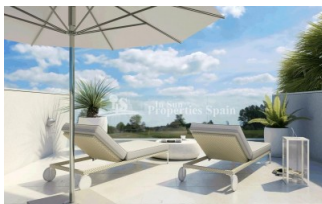
REF: # 5984

ALICANTE



INFO

PRICE:	187.000 €
PROPERTY TYPE:	Villa
CITY:	Alicante
BEDROOMS:	2
Bathrooms:	2
Build (m2):	86
Plot (m2):	153
Terrace (m2):	28
Year:	2018
Floor:	-
Old price	-

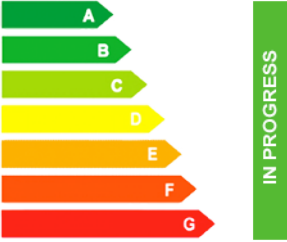


DESCRIPTION

Lovely NEW BUILD 86'50m2 Terraced Villas in DAYA NUEVA on plots from 153m2. Built to a high standard and incorporating a fresh, modern and light approach to the design. These superb bungalows will be distributed over just one floor and include a 28m2 roof solarium. They will boast 2, 3 or 4 bedroom, 2 bathrooms, a light and airy living/dining room with view to the garden and splash pool, open plan modern Kitchen and off-road parking. This is the first phase of the development and the first houses are due for delivery during Autumn 2018. Daya Nueva is a rural village surrounded by orange and lemon groves. There is a municipal swimming pool, open in the summer months, a few bars and restaurants and a number of parks. Daya Nueva is just 4km from the large Spanish town of Almoradi, 15km from the beaches of Guardamar, 30/35 minutes from both Alicante and Murcia, San Javier Airports, 15 minutes from San Isidro Train Station, 9km from La Marquesa Golf Course, 20 minutes from the Hospital and 15 minutes from both international and local schools. * There is the option of 3 or 4 bedrooms, details to be confirmed, with prices from €230,000

ENERGETIC CERTIFIED



STYLE	VIEWS	AIRCONDITIONING	DISTANCE TO :
<ul style="list-style-type: none"> Modern Contemporary 	<ul style="list-style-type: none"> Panoramic views Mountain views 	<ul style="list-style-type: none"> Central airconditioning 	Beach : +10 Km Airport: 40 Km Town center : 1 Km
ORIENTATION	FURNITURE	PARKING	FLOORING
South East West	<ul style="list-style-type: none"> Not furnished 	Parking no Cars: 1	<ul style="list-style-type: none"> Tile floors Stone floors
KITCHEN	GARDEN AND TERRACES	EXTRA	ENERGETIC CERTIFIED
<ul style="list-style-type: none"> Open kitchen Equipped kitchen Granite countertop 	<ul style="list-style-type: none"> Covered terrace Open terrace Landscaped Fenced Stone walls Private garden 	<ul style="list-style-type: none"> Reinforced door Double glazed windows 	 <p>The image shows a vertical energy efficiency scale with seven horizontal bars labeled A through G. Bar A is dark green, B is green, C is light green, D is yellow, E is orange, F is red-orange, and G is red. To the right of these bars is a vertical green bar with the text 'IN PROGRESS' written vertically inside it.</p>

"OUR EXPERIENCE IS YOUR GUARANTEE"