



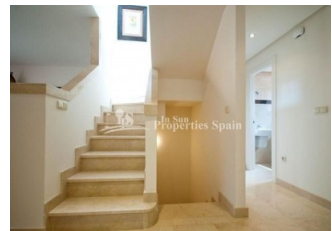
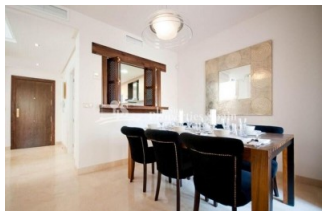
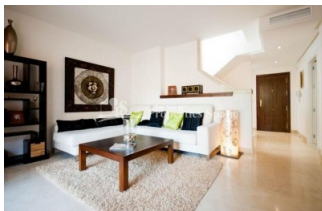
REF: # 5873

SAN MIGUEL (SAN MIGUEL)



#### INFO

|                 |                         |
|-----------------|-------------------------|
| PRICE:          | 180.000 €               |
| PROPERTY TYPE:  | Townhouse               |
| CITY:           | San Miguel (San Miguel) |
| BEDROOMS:       | 2                       |
| Bathrooms:      | 2                       |
| Build ( m2 ):   | 182                     |
| Plot ( m2 ):    | -                       |
| Terrace ( m2 ): | -                       |
| Year:           | 2017                    |
| Floor:          | -                       |
| Old price       | -                       |

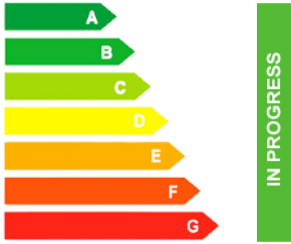


#### DESCRIPTION

The exclusive residential of "Cerro del Sol" SAN MIGUEL DE SALINAS is KEY READY and consists of two or three bedrooms (town house-style) Duplex. The Mediterranean style development is set around beautiful gardens and a large tropical swimming pool. Surrounded by the salt lakes of Torre Vieja and La Mata, and near to the National Park, Sierra Escalona, with 150,000 square meters of Mediterranean Pine Forest. The properties come Fully Furnished and are Key Ready! 2 bed, 2 bath from €180,000 and 3 bed, 3 bath from €239,000. San Miguel de Salinas is a traditional Spanish Village with an array of amenities for permanent residence, everything from cafes, bars, restaurants, supermarkets, medical centre and not to forget bus stop, band stand, a municipal open air swimming pool for use during the summer and a busy street market every Wednesday morning. It is set on a hill above the pink Laguna de Torre Vieja and offers impressive views over the countryside.

#### ENERGETIC CERTIFIED



| STYLE   | VIEWS   | DISTANCE TO :   | ORIENTATION  |
|---|---|---|--|
| <ul style="list-style-type: none"> <li>Mediterranean</li> </ul>   | <ul style="list-style-type: none"> <li>Panoramic views</li> <li>Mountain views</li> </ul> | Beach : 5 Km<br>Airport: 50 Km<br>Town center : 500 m   | South East West  |
| FURNITURE   | PARKING   | FLOORING  | KITCHEN  |
| <ul style="list-style-type: none"> <li>Furnished</li> </ul>   | Parking no Cars: 1  | <ul style="list-style-type: none"> <li>Tile floors</li> <li>Stone floors</li> </ul>   | <ul style="list-style-type: none"> <li>Open kitchen</li> <li>Equipped kitchen</li> </ul> |
| GARDEN AND TERRACES   | EXTRA   | ENERGETIC CERTIFIED   |  |
| <ul style="list-style-type: none"> <li>Covered terrace</li> <li>Open terrace</li> <li>Palm trees</li> <li>Landscaped</li> <li>Stone walls</li> <li>Communal Garden</li> </ul> | <ul style="list-style-type: none"> <li>Built in wardrobes</li> </ul>                      |  <p>The image shows a vertical energy efficiency scale with seven horizontal bars labeled A through G. The bars are colored in a gradient from green at the top to red at the bottom. A vertical green bar on the right side of the scale is labeled 'IN PROGRESS'.</p> |  |

*"OUR EXPERIENCE IS YOUR GUARANTEE"*