



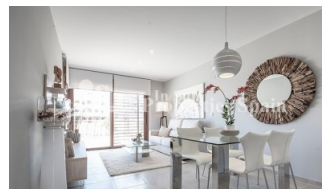
REF: # 5860

ORIHUELA COSTA (VILLAMARTIN LOS DOLSES )



#### INFO

PRICE:	160.000 €
PROPERTY TYPE:	Apartment
CITY:	Orihuela Costa (Villamartin Los Dolces )
BEDROOMS:	2
Bathrooms:	2
Build ( m2 ):	90
Plot ( m2 ):	-
Terrace ( m2 ):	-
Year:	2019
Floor:	-
Old price	-




#### DESCRIPTION

Residencial Gala has been pre-released by a well renowned builder in LOS DOLSES, VILLAMARTIN comprising of 2 & 3 bedroom apartments (90m2-118m2) and there are options of either ground floor with garden, middle floors with terrace or top floor with solarium. Prices start from €160,000 with exterior parking space. Delivery will be in July 2019. The development boasts 4,400m<sup>2</sup> of stunning communal garden areas with 2 swimming pools, 2 Jacuzzis and a children's play area. The rooftop solariums come complete with BBQ, shower, TV aerial and power sockets. The development is within walking distance to Villamartin plaza and the La Zenia Boulevard and close to many bars, shops and restaurants. 5 minutes drive from the sandy beach and just 50 minutes from Alicante International Airport. All apartments are available on PRE-SALE ONLY at this time, allowing interested clients to make a down payment of just €3,000 to reserve the right to choose their preferred property once the development goes on full sale in May 2018.

#### ENERGETIC CERTIFIED



STYLE	VIEWS	DISTANCE TO :	ORIENTATION
<ul style="list-style-type: none"> <li>Modern</li> <li>Contemporary</li> </ul>	<ul style="list-style-type: none"> <li>Panoramic views</li> </ul>	Beach : 3 Km Airport: 50 Km Town center : 1 Km	South East West
FURNITURE	PARKING	FLOORING	KITCHEN
<ul style="list-style-type: none"> <li>Not furnished</li> </ul>	Parking no Cars: 1	<ul style="list-style-type: none"> <li>Tile floors</li> <li>Stone floors</li> </ul>	<ul style="list-style-type: none"> <li>Open kitchen</li> <li>Equipped kitchen</li> <li>Granite countertop</li> </ul>
GARDEN AND TERRACES	EXTRA	ENERGETIC CERTIFIED	
<ul style="list-style-type: none"> <li>Covered terrace</li> <li>Open terrace</li> <li>Play Ground</li> <li>Landscaped</li> <li>BBQ/grill</li> <li>Private garden</li> <li>Communal Garden</li> </ul>	<ul style="list-style-type: none"> <li>Outdoor jacuzzi</li> <li>Built in wardrobes</li> <li>Reinforced door</li> <li>Double glazed windows</li> </ul>	 <p>The image shows a vertical energy efficiency scale with seven levels, A through G, represented by horizontal bars of increasing length and changing colors from green at the top to red at the bottom. Level A is the shortest (green), followed by B (light green), C (yellow-green), D (yellow), E (orange-yellow), F (orange), and G is the longest (red). To the right of this scale is a vertical green bar with the text 'IN PROGRESS' written vertically, indicating the current status of the property's energy certification.</p>	

**"OUR EXPERIENCE IS YOUR GUARANTEE"**