



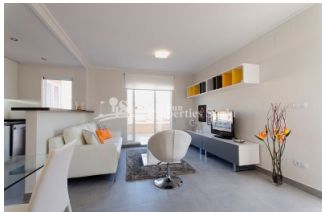
REF: # 5852

ORIHUELA COSTA (PUNTA PRIMA)



INFO

PRICE:	233.910 €
PROPERTY TYPE:	Apartment (Penthouse)
CITY:	Orihuela Costa (Punta Prima)
BEDROOMS:	2
Bathrooms:	2
Build (m2):	68
Plot (m2):	-
Terrace (m2):	61
Year:	2019
Floor:	-
Old price	-

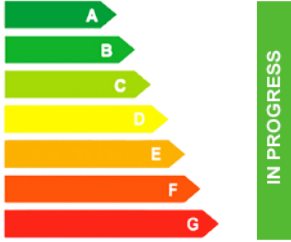


DESCRIPTION

Located in the privileged area of PUNTA PRIMA, 300 meters from the Punta Marina Shopping Center and 5 minutes from PUNTA PRIMA BEACH and Zenia Boulevard Shopping Center. Key ready, these are the last few remaining PENTHOUSE Apartments at this development. This penthouse apartment (in block) boasts 2 bedrooms within the 68m2 built surface area, an open plan living/dining room, fully equipped fitted kitchen, 2 bathrooms, 9m2 terrace and private 52m2 sunny solarium. The development is set within large communal green areas with swimming pool and Jacuzzi, one of them with indoor SPA pool (Jacuzzi, cervical jets, sauna, gym etc.) More than 5,000 m2 of green areas with swimming pools, Spa with Jacuzzi, sauna, Gym and children's areas, all this together makes this an Exclusive Residential not to be missed! The area is home to a number of championship Golf resorts including Campo de Golf Villamartin, Las Ramblas, Las Colinas Golf & Country Club and Campoamor. Nearby Torrevieja is a city full of vibrant nightlife and a lovely port and promenade. Alicante and Murcia (RMU) airports are

around 50 minutes from Punta Prima.



STYLE	VIEWS	DISTANCE TO :	ORIENTATION
<ul style="list-style-type: none"> Modern Mediterranean 	<ul style="list-style-type: none"> Panoramic views Sea views 	Beach : 1 Km Airport: 50 Km Town center : 500 m	South East West
FURNITURE	PARKING	FLOORING	KITCHEN
<ul style="list-style-type: none"> Not furnished 	Garage no Cars : 1 Parking no Cars: 1	<ul style="list-style-type: none"> Tile floors Stone floors 	<ul style="list-style-type: none"> Open kitchen Equipped kitchen
GARDEN AND TERRACES	EXTRA	ENERGETIC CERTIFIED	
<ul style="list-style-type: none"> Covered terrace Open terrace Palm trees Landscaped Communal Garden 	<ul style="list-style-type: none"> Indoor jacuzzi Built in wardrobes Double glazed windows 	 <p>The image shows a vertical energy efficiency scale with seven horizontal bars labeled A through G. The bars are colored in a gradient from green at the top to red at the bottom. A vertical green bar on the right side of the scale is labeled 'IN PROGRESS'.</p>	

"OUR EXPERIENCE IS YOUR GUARANTEE"