



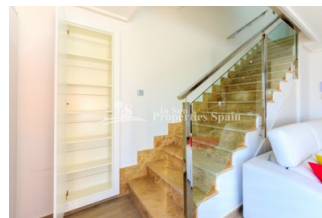
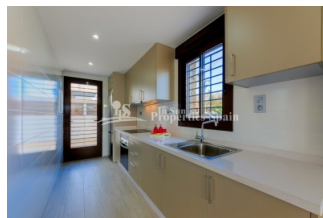
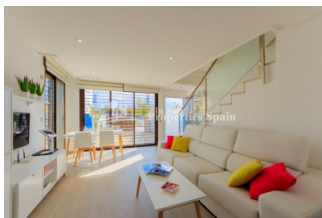
REF: # 5789

ORIHUELA COSTA (TORRE DE LA HORADADA )



#### INFO

PRICE:	214.000 €
PROPERTY TYPE:	Apartment
CITY:	Orihuela Costa (Torre de la Horadada )
BEDROOMS:	3
Bathrooms:	2
Build ( m2 ):	79
Plot ( m2 ):	-
Terrace ( m2 ):	-
Year:	2020
Floor:	-
Old price	208.000 €




#### DESCRIPTION

New stunning project just 400m from the sea at TORRE DE LA HORADADA! from a builder with over 30 years construction experience. 2/3 bedroom, 2 bathroom Bungalows (Apt Ground floor or Top Floor - some with Garage parking and some with roof solarium) that combine mediterranean style with modern and contemporary finish and a beautiful stone facade. All set within lovely communal areas with salt water pool, children's pool and Jacuzzi. 2 bed, 2 bath Ground floor from €224,000 and top floor from €229,000. Also available are 3 bed, 2 bath Townhouses from €280,000. Situated close to both Alicante and Javier Airport, a short walk to the beach, a few minutes from the golf course, leisure areas, supermarkets, hospital and medical centre. Typically Spanish Torre de la Horadada is easily recognisable by its watchtower. It has a large village square, a church, a couple of lovely sandy beaches, a quaint marina and a long promenade which joins the beaches of El Mojón to the south and Mil Palmeras to the north. A perfect place to own

a home in the sun! Delivery from April 2020



STYLE	VIEWS	DISTANCE TO :	ORIENTATION
<ul style="list-style-type: none"> <li>Modern</li> <li>Contemporary</li> </ul>	<ul style="list-style-type: none"> <li>Panoramic views</li> </ul>	Beach : 500 m Airport: 20 Km Town center : 500 m	South East West
FURNITURE	PARKING	FLOORING	KITCHEN
<ul style="list-style-type: none"> <li>Not furnished</li> </ul>	Garage no Cars : 1 Parking no Cars: 1	<ul style="list-style-type: none"> <li>Tile floors</li> <li>Stone floors</li> </ul>	<ul style="list-style-type: none"> <li>Open kitchen</li> <li>Equipped kitchen</li> <li>Granite countertop</li> </ul>
GARDEN AND TERRACES	EXTRA	ENERGETIC CERTIFIED	
<ul style="list-style-type: none"> <li>Covered terrace</li> <li>Open terrace</li> <li>Landscaped</li> <li>Stone walls</li> <li>Private garden</li> <li>Communal Garden</li> </ul>	<ul style="list-style-type: none"> <li>Built in wardrobes</li> <li>Reinforced door</li> <li>Double glazed windows</li> </ul>	 <p>The image shows a vertical energy efficiency scale with seven levels, A through G, represented by horizontal bars of increasing length and changing colors from green at the top to red at the bottom. Level A is dark green, B is medium green, C is light green, D is yellow, E is orange-yellow, F is orange, and G is red. To the right of this scale is a vertical green bar with the text 'IN PROGRESS' written vertically inside it, positioned between levels D and E.</p>	

**"OUR EXPERIENCE IS YOUR GUARANTEE"**