



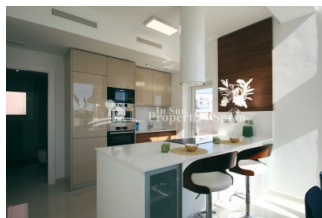
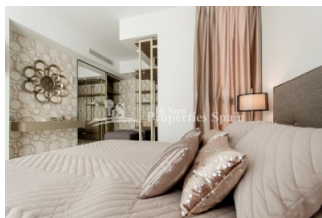
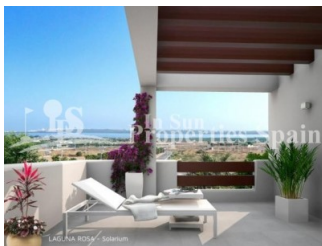
REF: # 5770

QUESADA-ROJALES (DONA PEPA)



INFO

PRICE:	297.000 €
PROPERTY TYPE:	Villa
CITY:	Quesada-Rojales (Dona Pepa)
BEDROOMS:	3
Bathrooms:	3
Build (m2):	101
Plot (m2):	180
Terrace (m2):	-
Year:	
Floor:	-
Old price	-




DESCRIPTION

These modern LUXURY VILLAS are located in one of the most beautiful and quiet areas between CIUDAD QUESADA and Pueblo Bravo, next to the Natural Park of La Lagunas de La Mata and Torrevieja and very close to the BEACHES OF GUARDAMAR. The residential consists of 50 homes of 101m2 occupying plots of 180m2 - 250m2, which can be of two models: Laguna Azul or Laguna Verde. To meet the needs of our customers, you can choose between 2 or 3 bedrooms and 2 or 3 bathrooms, as well as choose the possibility of having a BASEMENT and PRIVATE POOL. All homes have a terrace, private garden and access door for the car. In addition, they are designed with high quality materials using the most careful technology and providing the greatest comfort to our customers. Situated in a modern urbanisation belonging to Ciudad Quesada with all the amenities which include supermarkets, bars, hotel and shops as well as a bank. Ciudad Quesada town centre is a ten

minute walk from Doña Pepa. In Ciudad Quesada itself you will find international supermarkets, restaurants, banks, a medical centre as well as a water park. The property is ideally located if you are a golf enthusiast, with La Marquesqa Golf Club just a five minute drive away. The nearest beaches are at Guardamar/Campomar and La Mata ten minutes drive away. Nearest Airports are San Javier (Murcia) - Approx 30 minute drive and Alicante Airport - Approx 30 minute drive



STYLE <ul style="list-style-type: none"> Modern Contemporary 	VIEWS <ul style="list-style-type: none"> Panoramic views 	DISTANCE TO : <div>Beach : 6 Km</div> <div>Airport: 40 Km</div> <div>Town center : 1 Km</div>	PARKING <div>Parking no Cars: 1</div>
MAIN LIVING AREA <ul style="list-style-type: none"> Storage 	FLOORING <ul style="list-style-type: none"> Tile floors Stone floors 	KITCHEN <ul style="list-style-type: none"> Open kitchen Equipped kitchen Granite countertop 	GARDEN AND TERRACES <ul style="list-style-type: none"> Covered terrace Open terrace Stone walls Private garden
EXTRA <ul style="list-style-type: none"> Built in wardrobes Reinforced door Double glazed windows Storage room 	ENERGETIC CERTIFIED <div>  </div>		

"OUR EXPERIENCE IS YOUR GUARANTEE"