



REF: # 5769

ALICANTE



INFO

PRICE: 234.000 €

PROPERTY TYPE: Apartment

CITY: Alicante

BEDROOMS: 2

Bathrooms: 2

Build (m2): -

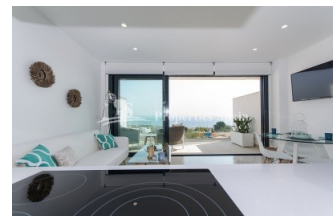
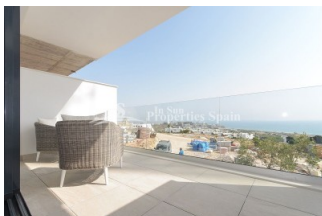
Plot (m2): 156

Terrace (m2): 10

Year: 2019

Floor: -

Old price -




DESCRIPTION

Delivery from Oct 2019. Superb new development of APARTMENTS/DUPLEX in GRAN ALACANT. A privileged location with STUNNING VIEWS of the Mediterranean Sea, in an environment of protected natural areas and with good services and communication. There are two types of Apartments for sale. TYPE A (3 Bedroom) comprises of ground floor parking space, hallway, bedroom, bathroom, open plan lounge, dining area and kitchen plus terrace. To the first floor there are a further 2 bedrooms, 2 bathrooms, laundry room and further terrace. prices from €306,000. TYPE B (2 bedrooms) comprises of ground floor parking space, basement, laundry room and patio. To the first floor 2 bedrooms, 2 bathrooms, open plan kitchen, lounge and dining area plus terrace. Prices from €234,000. All come with underfloor heating in bathrooms, pre-installation of air conditioning ducts and motorised blinds in bedrooms... Access to communal pool and gardens. Excellent connections to Alicante city and Airport. Walking distance to the beaches and just a few kilometers from Alicante, Elche and Santa Pola. Close to the marina, train stations and approx. 5 minutes from the international airport. Nearby there is a wide range of services with access to hospitals,

shopping centres, entertainment and golf courses.



STYLE	VIEWS	DISTANCE TO :	ORIENTATION
<ul style="list-style-type: none"> Modern Contemporary 	<ul style="list-style-type: none"> Panoramic views Sea views 	Beach : 500 m Airport: 10 Km Town center : 500 m	South
FURNITURE	PARKING	FLOORING	KITCHEN
<ul style="list-style-type: none"> Not furnished 	Parking no Cars: 1	<ul style="list-style-type: none"> Tile floors Stone floors 	<ul style="list-style-type: none"> Open kitchen Equipped kitchen Granite countertop
GARDEN AND TERRACES	EXTRA	ENERGETIC CERTIFIED	
<ul style="list-style-type: none"> Covered terrace Open terrace Communal Garden 	<ul style="list-style-type: none"> Built in wardrobes Reinforced door Double glazed windows Laundry room 	 <p>The image shows a vertical energy efficiency scale with seven levels, A through G, represented by horizontal bars of increasing length and changing colors from green at the top to red at the bottom. Level A is the shortest (green), followed by B (light green), C (yellow-green), D (yellow), E (orange-yellow), F (orange), and G (red). To the right of this scale is a vertical green bar with the text 'IN PROGRESS' written vertically inside it, positioned between levels C and D.</p>	

"OUR EXPERIENCE IS YOUR GUARANTEE"