



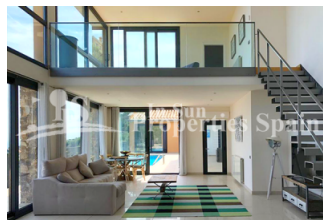
REF: # 4714

ORIHUELA COSTA (VILLAMARTIN-PAU26)



INFO

| | |
|-----------------|------------------------------------|
| PRICE: | 350.000 € |
| PROPERTY TYPE: | Villa |
| CITY: | Orihuela Costa (Villamartin-Pau26) |
| BEDROOMS: | 3 |
| Bathrooms: | 3 |
| Build (m2): | 186 |
| Plot (m2): | 329 |
| Terrace (m2): | 83 |
| Year: | 2018 |
| Floor: | - |
| Old price | - |



DESCRIPTION

This is an exclusive Residential IN PAU-26, VILLAMARTIN, ORIHUELA COSTA. Comprising of 6 Detached Villas of an impressive modern, contemporary design boasting large and luminous spaces with a sophisticated but cozy design. The Villas distribute on the ground floor, open concept lounge, dining area and kitchen, one bedroom, bathrooms and guest toilet. To the first floor you will find 2 further bedrooms, 2 bathrooms and access to the roof solarium. Externally you have a landscaped garden and space for a private 5*3 swimming pool. The Villas are only a short drive from Villamartin Plaza, Golf and close to three other 18-hole Golf Courses. 3km to the sandy beaches of Orihuela Costa and 2km to the NEW Shopping Centre Zenia Boulevard! Villamartin offers all year round services including bars, restaurants, outdoor eating and a selection of shops. One of the most popular commercial centres is Villamartin Plaza that offers a vast selection of cuisines. Along with medical centre and school it is an ideal place to own

a holiday home or permanent residence here in Spain. Nearest Airports are Alicante Airport (approx 45 minutes away) and Corvera Airport (approx 45 minutes away)



| STYLE | DISTANCE TO : | ORIENTATION | PARKING |
|---|--|--|---|
| <ul style="list-style-type: none"> Modern Contemporary | Beach : 3 Km Airport: 50 Km Town center : 200 m | South East West | Parking no Cars: 1 |
| FLOORING | KITCHEN | GARDEN AND TERRACES | ENERGETIC CERTIFIED |
| <ul style="list-style-type: none"> Tile floors Stone floors | <ul style="list-style-type: none"> Open kitchen Equipped kitchen Granite countertop | <ul style="list-style-type: none"> Covered terrace Open terrace Landscaped Stone walls Private garden | <div> <div> <div>A</div> <div>B</div> <div>C</div> <div>D</div> <div>E</div> <div>F</div> <div>G</div> </div> <div> In wardrobes Double glazed windows ... </div> <div>IN PROGRESS</div> </div> |

"OUR EXPERIENCE IS YOUR GUARANTEE"