



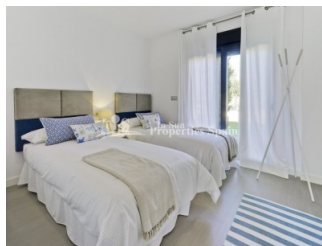
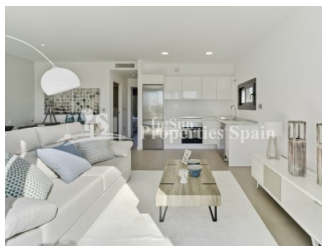
REF: # 4552

ORIHUELA COSTA (PILAR DE LA HORADADA)



#### INFO

PRICE:	219.900 €
PROPERTY TYPE:	Villa
CITY:	Orihuela Costa (Pilar de la Horadada)
BEDROOMS:	3
Bathrooms:	2
Build ( m2 ):	91
Plot ( m2 ):	215
Terrace ( m2 ):	81
Year:	2018
Floor:	-
Old price	-




#### DESCRIPTION

SUMMER 2018 delivery...Villa Sara on the Outer Island at LO ROMERO GOLF COURSE, PILAR DE LA HORADADA is a 3 bedroom 91m2 model with 2 bathrooms, open plan lounge / dining area, private garden and 81m2 rooftop solarium. Distributed on one level within a 215m2 plot. Large master bedroom with en-suite bathroom, full side wall wardrobes with patio door leading onto the private garden – exterior steps take you to the generous rooftop solarium. These stunning detached villas are available on different sized plots on an elevated position at Lo Romero Golf Resort – some enjoying stunning views to the sea and golf course. Lo Romero Golf is a complex of more than 1.25 million square meters, which includes a golf course of 18 holes par 72, with clubhouse and driving range, sports and leisure area, hotel and shops. Its magnificent sea views, prime location, just 5 km from the beautiful beaches of Torre de la Horadada, and its design of wide streets surrounded by lush pine

have made this golf resort one of the most popular in the area, since its opening in January 2008.



STYLE	VIEWS	DISTANCE TO :	ORIENTATION
<ul style="list-style-type: none"> <li>Modern</li> <li>Contemporary</li> </ul>	<ul style="list-style-type: none"> <li>Panoramic views</li> </ul>	Beach : 5 Km Airport: 20 Km Town center : 2 Km	South East West
FURNITURE	PARKING	FLOORING	KITCHEN
<ul style="list-style-type: none"> <li>Not furnished</li> </ul>	Parking no Cars: 1	<ul style="list-style-type: none"> <li>Tile floors</li> <li>Stone floors</li> </ul>	<ul style="list-style-type: none"> <li>Open kitchen</li> <li>Equipped kitchen</li> <li>Granite countertop</li> </ul>
GARDEN AND TERRACES	EXTRA	ENERGETIC CERTIFIED	
<ul style="list-style-type: none"> <li>Covered terrace</li> <li>Open terrace</li> <li>Landscaped</li> <li>Private garden</li> </ul>	<ul style="list-style-type: none"> <li>Built in wardrobes</li> <li>Reinforced door</li> <li>Double glazed windows</li> </ul>	 <p>The image shows a vertical energy efficiency scale with seven levels, A through G, represented by horizontal bars of increasing length and changing colors from green at the top to red at the bottom. Level A is dark green, B is medium green, C is light green, D is yellow, E is orange-yellow, F is orange, and G is red. To the right of this scale is a vertical green bar with the text 'IN PROGRESS' written vertically inside it, positioned between levels D and E.</p>	

**"OUR EXPERIENCE IS YOUR GUARANTEE"**