



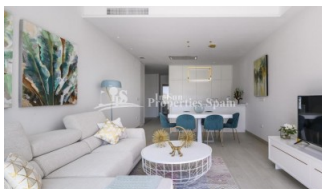
REF: # 4525

ORIHUELA COSTA (LAS COLINAS GOLF CLUB )



#### INFO

PRICE:	246.000 €
PROPERTY TYPE:	Apartment
CITY:	Orihuela Costa (Las Colinas Golf Club )
BEDROOMS:	2
Bathrooms:	2
Build ( m2 ):	76
Plot ( m2 ):	-
Terrace ( m2 ):	20
Year:	2020
Floor:	2
Old price	-

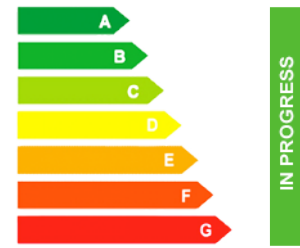


#### DESCRIPTION

The Hinojo Community sits at one of the highest points of LAS COLINAS GOLF & COUNTRY CLUB and enjoys views over the Mediterranean forest and the sea from the highest apartments. The first phase of this community is made up by two buildings with a total of 50 luxury apartments, all south facing and with spacious terraces. All the apartments have their own parking spaces and storerooms, with direct access by lift from the home. Each building includes 25 units in four heights, with a range of different models of apartments of 2 and 3 bedrooms with a built Area from 105 m2 and terraces from 86 m2, penthouses with large solariums and ground floors with ample terraces. The second phase of the Hinojo community comprises three buildings with a total of 51 luxury south-facing apartments with large terraces. All the apartments include a parking space and storage room, which can be accessed directly by lift from the apartments. Each building is distributed

across four floors, offering a range of 2 and 3-bedroom apartments, including penthouses with large sun terraces and ground-floor apartments with large individual terraces. The common areas at the Hinojo Community include gardens, a private pool and dedicated access in each phase and relaxation areas, surrounded by palm trees and native vegetation. Las Colinas Golf & Country Club is an exclusive residential complex with low housing density and built around an award winning 18-hole golf course. In a privileged enclave, Las Colinas is located in a valley surrounded by hills and a Nature reserve of protected land and woodland. Las Colinas Golf & Country Club is much appreciated due to its privacy, natural beauty, exceptional climate, extremely good connections by road, train and air and conservation of the natural surroundings. Its homes, amenities, infrastructures and the golf course itself all blend perfectly into the surrounding landscape. our life in Las Colinas Golf & Country Club includes some golf just a walk away, shopping in any of the convenient shopping centers, sunbathing on the beach or dining in any of the nearby charming villages. And all these services and leisure a short drive away; International schools, Shopping centers, Golf courses, Marinas, Natural reserve, International Hospital, Beach Club. The resort has been named "Europe's Leading Villa Resort" in the 2017 World Travel Awards as well as "Spain's Leading Villa Resort" in the 2015, 2016 and 2017 World Travel Awards and Spain's Best Golf Course in 2015, 2016 and 2017.

#### ENERGETIC CERTIFIED



<b>STYLE</b> <ul style="list-style-type: none"> <li>Modern</li> <li>Contemporary</li> </ul>	<b>VIEWS</b> <ul style="list-style-type: none"> <li>Panoramic views</li> <li>Mountain views</li> </ul>	<b>DISTANCE TO :</b> <div>Beach : 8 Km</div> <div>Airport: 40 Km</div> <div>Town center : 2 Km</div>	<b>ORIENTATION</b> <div>South East West</div>
<b>FURNITURE</b> <ul style="list-style-type: none"> <li>Not furnished</li> </ul>	<b>PARKING</b> <div>Parking no Cars: 1</div>	<b>FLOORING</b> <ul style="list-style-type: none"> <li>Tile floors</li> <li>Stone floors</li> </ul>	<b>KITCHEN</b> <ul style="list-style-type: none"> <li>Open kitchen</li> <li>Equipped kitchen</li> <li>Granite countertop</li> </ul>
<b>GARDEN AND TERRACES</b> <ul style="list-style-type: none"> <li>Covered terrace</li> <li>Open terrace</li> <li>Palm trees</li> <li>Landscaped</li> <li>Communal Garden</li> </ul>	<b>EXTRA</b> <ul style="list-style-type: none"> <li>Built in wardrobes</li> <li>Reinforced door</li> <li>Double glazed windows</li> </ul>	<b>ENERGETIC CERTIFIED</b> <div> <p>The image shows a vertical energy efficiency scale with seven levels, A through G, represented by horizontal bars of increasing length and changing colors from green at the top to red at the bottom. A vertical green bar on the right side of the scale is labeled 'IN PROGRESS' and extends up to the level of 'D'.</p> </div>	

**"OUR EXPERIENCE IS YOUR GUARANTEE"**