



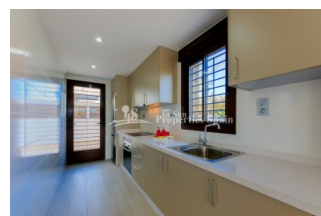
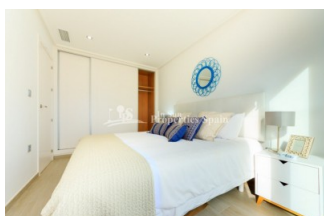
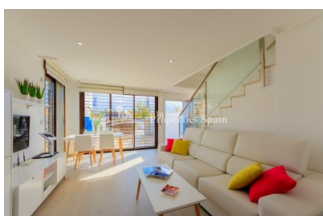
REF: # 4450

ORIHUELA COSTA (TORRE DE LA HORADADA)



INFO

PRICE:	181.900 €
PROPERTY TYPE:	Apartment
CITY:	Orihuela Costa (Torre de la Horadada)
BEDROOMS:	2
Bathrooms:	2
Build (m2):	67
Plot (m2):	-
Terrace (m2):	81
Year:	2018
Floor:	-
Old price	-




DESCRIPTION

NEW luxury development just 400m from the sea at Torre de la Horadada! From a builder with over 30years construction experience. 2 and 3 bedroom, 2 bathroom Ground floor and First floor Bunaglows, all set within 450m2 of communal area with salt water pool, children's pool and Jacuzzi. Kitchen equipped to include electrical devices and BBQ to the solarium. 3 Bedroom, 2 Bathroom of 80m2 with 37m2 terrace start from just €189,900. Situated close to both Alicante and Javier Airport, a short walk to the beach, a few minutes from the golf course, leisure areas, supermarkets, hospital and medical centre. Typically Spanish Torre de la Horadada is easily recognisable by its watchtower. It has a large village square, a church, a couple of lovely sandy beaches, a quaint marina and a long promenade which joins the beaches of El Mojón to the south and Mil Palmeras to the north. A perfect place to own a home in the sun!

ENERGETIC CERTIFIED



STYLE	VIEWS	DISTANCE TO :	ORIENTATION
<ul style="list-style-type: none"> Modern Contemporary 	<ul style="list-style-type: none"> Panoramic views 	Beach : 500 m Airport: 40 Km Town center : 1 Km	South East West
FURNITURE	FLOORING	KITCHEN	GARDEN AND TERRACES
<ul style="list-style-type: none"> Not furnished 	<ul style="list-style-type: none"> Tile floors Stone floors 	<ul style="list-style-type: none"> Open kitchen Equipped kitchen Granite countertop 	<ul style="list-style-type: none"> Covered terrace Open terrace Exterior lights Palm trees Landscaped Stone walls BBQ/grill Private garden Communal Garden
HEATING	EXTRA	ENERGETIC CERTIFIED	
<ul style="list-style-type: none"> Floor heating Floor heating bathrooms 	<ul style="list-style-type: none"> Outdoor jacuzzi Reinforced door Double glazed windows 	 <p>The image shows a vertical energy efficiency scale with seven horizontal bars labeled A through G. The bars are colored in a gradient from green at the top (A) to red at the bottom (G). To the right of these bars is a vertical green bar with the text 'IN PROGRESS' written vertically inside it.</p>	

"OUR EXPERIENCE IS YOUR GUARANTEE"