



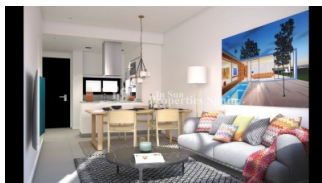
REF: # 4448

ORIHUELA COSTA (VILLAMARTIN GOLF)



INFO

PRICE:	177.000 €
PROPERTY TYPE:	Apartment
CITY:	Orihuela Costa (Villamartin Golf)
BEDROOMS:	2
Bathrooms:	2
Build (m2):	55
Plot (m2):	-
Terrace (m2):	11
Year:	
Floor:	-
Old price	-




DESCRIPTION

VALENTINO GOLF III in VILLAMARTIN - NEW modern apartments 2 bedrooms, 2 bathrooms with POOL VIEW, comfortable APARTMENTS with a spacious terrace to enjoy the 300 days of sunshine a year and the Mediterranean climate. Prices from 177,000 to 226,000 Euros. Penthouse with 55 m2 roof terrace. Handover march 2023. Underground parking included in the price! Located in a secure, gated complex with communal swimming pools, communal gardens, just a 5 minute walk to the famous VILLAMARTIN PLAZA and golf course with clubhouse, just 5 minutes by car to the ZENIA BOULEVARD shopping center and the white sandy beaches of Orihuela Costa. Villamartin Plaza offers year-round services such as bars, restaurants, banks and a selection of shops and medical center and school, making it an ideal place to own a

vacation rental or permanent residence in Spain. Airports: Alicante and Murcia Airport 45 minutes away.



STYLE	VIEWS	DISTANCE TO :	ORIENTATION
<ul style="list-style-type: none"> Modern Contemporary 	<ul style="list-style-type: none"> Panoramic views 	Beach : 3 Km Airport: 50 Km Town center : 500 m	South
FURNITURE	PARKING	FLOORING	KITCHEN
<ul style="list-style-type: none"> Not furnished 	Parking no Cars: 1	<ul style="list-style-type: none"> Tile floors Stone floors 	<ul style="list-style-type: none"> Open kitchen Equipped kitchen Granite countertop
GARDEN AND TERRACES	EXTRA	ENERGETIC CERTIFIED	
<ul style="list-style-type: none"> Open terrace Palm trees Landscaped Fenced Stone walls Padle tennis Communal Garden 	<ul style="list-style-type: none"> Reinforced door Double glazed windows Lift 	 <p>The image shows a vertical energy efficiency scale with seven levels, A through G, represented by horizontal bars of increasing length and changing colors from green at the top to red at the bottom. Level A is the shortest (green), B is slightly longer (light green), C is longer (yellow-green), D is longer (yellow), E is longer (orange-yellow), F is longer (orange), and G is the longest (red). To the right of this scale is a vertical green bar with the text 'IN PROGRESS' written vertically inside it, positioned between the D and E levels.</p>	

"OUR EXPERIENCE IS YOUR GUARANTEE"