



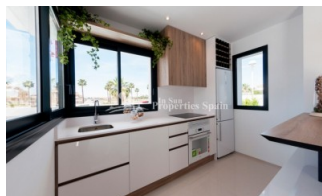
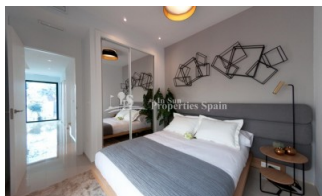
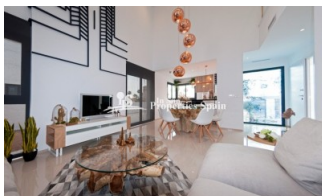
REF: # 4417

QUESADA-ROJALES (DONA PEPA)



INFO

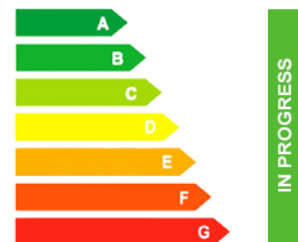
PRICE:	543.000 €
PROPERTY TYPE:	Villa
CITY:	Quesada-Rojales (Dona Pepa)
BEDROOMS:	5
Bathrooms:	4
Build (m2):	243
Plot (m2):	315
Terrace (m2):	55
Year:	2017
Floor:	-
Old price	-




DESCRIPTION

Direct from a Builder with over 40 years experience, the Villa Ivory Mediterráneo - El Parque. This is a 5 Bedroom, 4 Bathroom Villa of 243m2 on a 315m2 plot with 55m2 solarium and private pool. Located in Dona Pepa, Ciudad Quesada approximately 5Km inland from the Costa Blanca at Guardamar de la Segura. Alicante and Murcia airports are both approximately 50Km away and the nearest beach is within 10 minutes drive. The town centre of Ciudad Quesada is well provided with shops, bars, restaurants, a golf course and its own water park. There are many championship golf courses to choose from: Villamartin, Las Ramblas and Campoamor are the closest. There are many more within an hour's drive. All making this your perfect home in the sun!

ENERGETIC CERTIFIED



STYLE	VIEWS	DISTANCE TO :	ORIENTATION
<ul style="list-style-type: none"> Modern Mediterranean 	<ul style="list-style-type: none"> Panoramic views 	Beach : 5 Km Airport: 30 Km Town center : 1 Km	South west
PARKING	MAIN LIVING AREA	FLOORING	KITCHEN
Parking no Cars: 1	<ul style="list-style-type: none"> Storage 	<ul style="list-style-type: none"> Tile floors Stone floors 	<ul style="list-style-type: none"> Open kitchen Equipped kitchen Granite countertop
GARDEN AND TERRACES	EXTRA	ENERGETIC CERTIFIED	
<ul style="list-style-type: none"> Open terrace Landscaped Private garden 	<ul style="list-style-type: none"> Reinforced door Double glazed windows 	 <p>The image shows a vertical energy efficiency scale with seven levels, A through G, represented by horizontal bars of increasing length and changing colors from green at the top to red at the bottom. Level A is the highest (shortest bar), and level G is the lowest (longest bar). To the right of this scale is a vertical green bar with the text 'IN PROGRESS' written vertically inside it, indicating the current energy rating of the property.</p>	

"OUR EXPERIENCE IS YOUR GUARANTEE"