



REF: # 4411

ALICANTE



#### INFO

PRICE: 310.000 €

PROPERTY TYPE: Apartment

CITY: Alicante

BEDROOMS: 4

Bathrooms: 3

Build ( m2 ): 120

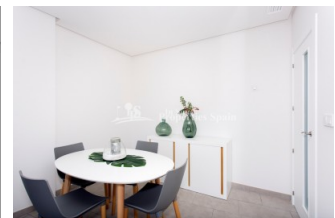
Plot ( m2 ): -

Terrace ( m2 ): -

Year: 2017

Floor: 1

Old price -




#### DESCRIPTION

KEY READY....Urbanization SAN ANTONIO is a residential complex located in a privileged position in ARENEALES DEL SOL, ALICANTE OVERLOOKING THE MEDITERRANEAN SEA! The complex is located in ARENALES DEL SOL, surrounded by nearly 3Km of GOLDEN SAND and crystal clear water. Top quality materials with wardrobes, solid doors, video intercom, storage room in basement and underground parking with direct access by LIFT. An ideal place to live with all amenities, surrounded by sun, sea and nature! The residential offer is completed with over 24,000m2 of recreational areas, where children can play in a secure environment. There are 4 swimming pools, one with swimming lane lines, two tennis courts and sports field, locker rooms and gardens. An ideal place to spend your free time playing sports or enjoying with the family. Only 15 minutes drive from Alicante Airport

#### ENERGETIC CERTIFIED



|   |   |  |   |
|---|---|--|---|
| <b>STYLE</b> <ul style="list-style-type: none"> <li>• Modern</li> <li>• Contemporary</li> </ul>   | <b>VIEWS</b> <ul style="list-style-type: none"> <li>• Panoramic views</li> <li>• Sea views</li> </ul>   | <b>AIRCONDITIONING</b> <ul style="list-style-type: none"> <li>• Central airconditioning</li> </ul>   | <b>DISTANCE TO :</b> <div>Beach : 200 m</div> <div>Airport: 10 Km</div> <div>Town center : 5 Km</div>                                     |
| <b>ORIENTATION</b> <div>South west</div>  | <b>PARKING</b> <div>Parking no Cars: 1</div>  | <b>FLOORING</b> <ul style="list-style-type: none"> <li>• Tile floors</li> <li>• Stone floors</li> </ul>  | <b>KITCHEN</b> <ul style="list-style-type: none"> <li>• Open kitchen</li> <li>• Equipped kitchen</li> <li>• Granite countertop</li> </ul> |
| <b>GARDEN AND TERRACES</b> <ul style="list-style-type: none"> <li>• Open terrace</li> <li>• Palm trees</li> <li>• Play Ground</li> <li>• Landscaped</li> <li>• Fenced</li> <li>• Stone walls</li> <li>• Electric gate</li> <li>• Padle tennis</li> <li>• Communal Garden</li> </ul> | <b>EXTRA</b> <ul style="list-style-type: none"> <li>• Reinforced door</li> <li>• Double glazed windows</li> <li>• Storage room</li> <li>• Lift</li> </ul> | <b>ENERGETIC CERTIFIED</b>  <p>The image shows a vertical energy efficiency scale with seven horizontal bars labeled A through G. The bars are colored in a gradient from green at the top to red at the bottom. A vertical green bar on the right side of the scale is labeled 'IN PROGRESS'.</p> |   |

**"OUR EXPERIENCE IS YOUR GUARANTEE"**