



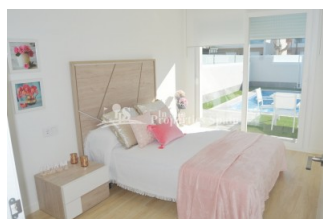
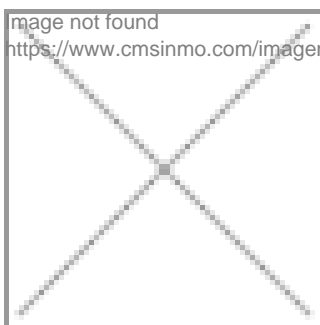
REF: # 4283

ORIHUELA COSTA (LO PAGAN-SAN PEDRO)



INFO

PRICE:	249.000 €
PROPERTY TYPE:	Villa (Semi detached)
CITY:	Orihuela Costa (Lo Pagan-San Pedro)
BEDROOMS:	3
Bathrooms:	2
Build (m2):	114
Plot (m2):	184
Terrace (m2):	19
Year:	-
Floor:	-
Old price	-

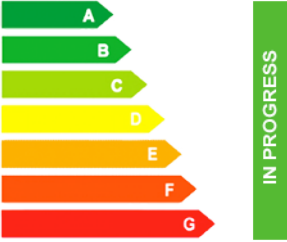


DESCRIPTION

This new development is located in SAN PEDRO DEL PINTAR, next to the Salinas Natural Park of San Pedro, a few meters from the beaches of the MAR MENOR and Mediterranean Sea, and only a few meters from the town center. Last remaining SEMI-DETACHED 111m2 villa on two floors, with three bedrooms and two bathrooms. Individual swimming pool with Jacuzzi within a 184m2 plot. Ground floor with open modern integrated kitchen, dining /living area, 1 double bedroom 1 bedrooms and sunny terraces with pool views, first floor with 2 bedrooms with fitted wardrobe, 1 bathrooms and 19m2 Terrace and 93m2 garden. Modern style finishes and built in the best quality materials. Walking distance to restaurants, bars, supermarket and all amenities. This area has a Thalassotherapy SPA Hotel and also offers a variety of sports activities,

including seasonal water sports, you can choose from 5 Championship golf courses all within 10 minutes drive — the Pinatar arena is 5 minutes walk away with football, gym, cricket and tennis courts. 15 minutes drive to San Javier Murcia-Airport and 45 minutes to Alicante-Airport



STYLE <ul style="list-style-type: none"> Modern Contemporary 	VIEWS <ul style="list-style-type: none"> Panoramic views 	AIRCONDITIONING <ul style="list-style-type: none"> Central airconditioning 	DISTANCE TO : <div>Beach : 1 Km</div> <div>Airport: 20 Km</div> <div>Town center : 1 Km</div>
ORIENTATION <div>South west</div>	FURNITURE <ul style="list-style-type: none"> Not furnished 	PARKING <div>Parking no Cars: 1</div>	FLOORING <ul style="list-style-type: none"> Tile floors Stone floors
KITCHEN <ul style="list-style-type: none"> Open kitchen Equipped kitchen Granite countertop 	GARDEN AND TERRACES <ul style="list-style-type: none"> Open terrace Exterior lights Palm trees Landscaped Fenced Stone walls Private garden 	EXTRA <ul style="list-style-type: none"> Built in wardrobes Double glazed windows 	ENERGETIC CERTIFIED <div>  </div>

"OUR EXPERIENCE IS YOUR GUARANTEE"