



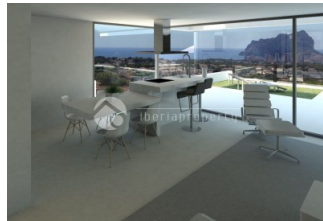
REF: # 3211

CALPE/MORAIRA (CALPE CENTRO)



#### INFO

PRICE:	795.000 €
PROPERTY TYPE:	Villa
CITY:	Calpe/Moraira (Calpe centro)
BEDROOMS:	3
Bathrooms:	2
Build ( m2 ):	200
Plot ( m2 ):	900
Terrace ( m2 ):	-
Year:	2015
Floor:	-
Old price	-




#### DESCRIPTION

SPECTACULAR VILLA in an elevated position situated just 2 km from the wonderful, sandy beaches of Calpe. With an open view to the sea and Benissa coastline this villa nestles against the hillside facing completely South. With its open plan kitchen design and many large glass windows, the property has a very bright and airy feel in its interior. Being a new build villa it will have all the modern touches you would expect from a villa built in 2015. The property is fitted with air conditioning and heating throughout. The garden is beautifully designed, partly tiled and the beautifully designed pool is surrounded by top quality decking. Outside the garden is low maintenance and landscaped with water irrigation and feeding system, a range of Mediterranean plants, trees and shrubs, fruit trees including. Barbecue and plenty of space for entertaining.

#### ENERGETIC CERTIFIED



STYLE	VIEWS	AIRCONDITIONING	ORIENTATION
<ul style="list-style-type: none"> <li>Modern</li> </ul>	<ul style="list-style-type: none"> <li>Sea views</li> <li>Mountain views</li> </ul>	<ul style="list-style-type: none"> <li>Central airconditioning</li> </ul>	South
KITCHEN	GARDEN AND TERRACES	ENERGETIC CERTIFIED	
<ul style="list-style-type: none"> <li>Open kitchen</li> <li>Equipped kitchen</li> <li>Granite countertop</li> </ul>	<ul style="list-style-type: none"> <li>Covered terrace</li> <li>Open terrace</li> <li>Exterior lights</li> <li>Automatic watering system</li> <li>Fruit trees</li> <li>Palm trees</li> <li>Landscaped</li> <li>Stone walls</li> <li>Electric gate</li> <li>BBQ/grill</li> <li>Private garden</li> </ul>	 <p>The image shows a vertical energy efficiency scale with seven horizontal bars labeled A through G. The bars are colored in a gradient from dark green at the top (A) to red at the bottom (G). To the right of these bars is a vertical green bar with the text 'IN PROGRESS' written vertically inside it.</p>	

**"OUR EXPERIENCE IS YOUR GUARANTEE"**