



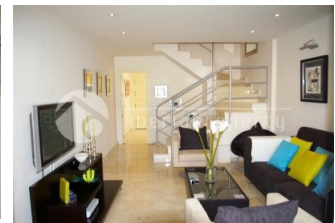
REF: # 2279

MARBELLA (NUEVA ANDALUCIA)



#### INFO

PRICE:	270.000 €
PROPERTY TYPE:	Townhouse
CITY:	Marbella (Nueva Andalucia)
BEDROOMS:	4
Bathrooms:	2
Build ( m2 ):	146
Plot ( m2 ):	305
Terrace ( m2 ):	59
Year:	-
Floor:	-
Old price	-

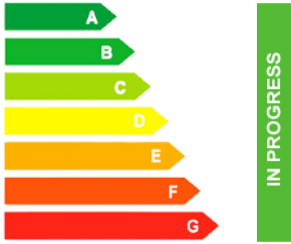


#### DESCRIPTION

Nice townhouse consisting of 4 double bedrooms and 2 bathrooms (totally renovated), totally refurbished, living room, new fully fitted kitchen with dining area, air conditioning hot and cold, private parking space and beautiful views over the communal swimming pool and garden. Sold fully furnished. Superb high quality townhouse in a quiet private urbanization just 5 minutes from Puerto Banus. The property is an excellent size and with 4 Bedrooms this has to be the best property deal in Nueva Andalucia. Why not check it out for yourself? For the LATEST properties, [CLICK HERE](#)

#### ENERGETIC CERTIFIED



<b>STYLE</b> <ul style="list-style-type: none"> <li>Mediterranean</li> </ul>	<b>AIRCONDITIONING</b> <ul style="list-style-type: none"> <li>Central airconditioning</li> </ul>	<b>DISTANCE TO :</b> <div>Beach : 1 Km</div> <div>Airport: 70 Km</div> <div>Town center : 500 m</div>	<b>ORIENTATION</b> <div>West</div>
<b>FURNITURE</b> <ul style="list-style-type: none"> <li>Furnished</li> </ul>	<b>PARKING</b> <div>Garage no Cars : 1</div>	<b>FLOORING</b> <ul style="list-style-type: none"> <li>Tile floors</li> </ul>	<b>KITCHEN</b> <ul style="list-style-type: none"> <li>Open kitchen</li> <li>Equipped kitchen</li> </ul>
<b>GARDEN AND TERRACES</b> <ul style="list-style-type: none"> <li>Covered terrace</li> <li>Landscaped</li> <li>Private garden</li> <li>Communal Garden</li> </ul>	<b>EXTRA</b> <ul style="list-style-type: none"> <li>Reinforced door</li> <li>Double glazed windows</li> </ul>	<b>ENERGETIC CERTIFIED</b>  <p>The image shows a vertical energy efficiency scale with seven horizontal bars labeled A through G. The bars are colored in a gradient from green at the top to red at the bottom. A green vertical bar on the right side of the scale is labeled 'IN PROGRESS'.</p>	

**"OUR EXPERIENCE IS YOUR GUARANTEE"**