

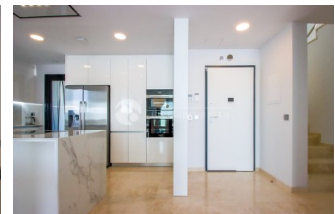
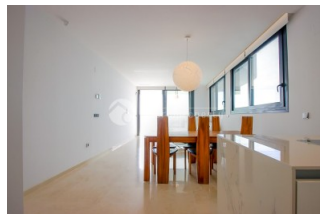
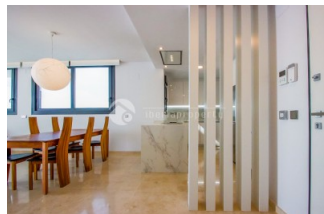
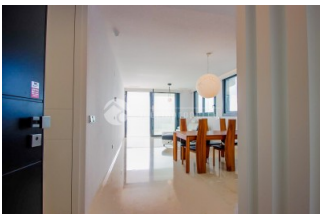


REF: # 13337

BENIDORM (PLAYA PONIENTE)



INFO	
PRICE:	1.439.000 €
PROPERTY TYPE:	Apartment (Penthouse)
CITY:	Benidorm (Playa Poniente)
BEDROOMS:	3
Bathrooms:	2
Build (m2):	137
Plot (m2):	-
Terrace (m2):	135
Year:	
Floor:	100
Old price	-



DESCRIPTION

Exclusive high-end property in the Poniente area of Benidorm, with only one apartment per floor, ideal for those seeking privacy, spaciousness and spectacular views. The property is distributed as follows: a spacious living-dining room with open-plan kitchen, 3 bedrooms and 2 bathrooms, one of them en suite in the master bedroom. Two of the bedrooms have access to a large balcony on the main floor of the property. An internal staircase leads to a large private solarium terrace, equipped with a jacuzzi and an area prepared to install a summer kitchen, perfect for enjoying the climate and the stunning views. As this is a penthouse, the property enjoys incredible views over the entire beach and the surrounding area. The property also includes two parking spaces and three storage rooms: one on the same floor as the apartment, one next to the parking space and another on the garage level. Its features and fittings include underfloor heating throughout the apartment, electric shutters, alarm system, video surveillance, marble floors and hot/cold air conditioning. Located in Poniente, Benidorm, it is very close to the beach

and all amenities, with the beach only a 5-minute walk away. The residential complex offers excellent communal facilities, including a heated indoor pool, outdoor pool and gym.

ENERGETIC CERTIFIED

energy house

Image type unknown

<https://www.iberiaproperty.com/assets/images/viass/>

STYLE	VIEWS	AIRCONDITIONING	DISTANCE TO :
<ul style="list-style-type: none"> • Modern 	<ul style="list-style-type: none"> • Panoramic views • Sea views • Mountain views 	<ul style="list-style-type: none"> • Central airconditioning • Livingroom • Kitchen • Bedrooms 	Beach : 200 m <hr/> Airport: 30 Km <hr/> Town center : 50 m <hr/>
ORIENTATION	PARKING	FLOORING	KITCHEN
South east <hr/>	Garage no Cars : 2 <hr/>	<ul style="list-style-type: none"> • Marble floors • Stone floors 	<ul style="list-style-type: none"> • Open kitchen • Equipped kitchen
GARDEN AND TERRACES	HEATING	EXTRA	ENERGETIC CERTIFIED
<ul style="list-style-type: none"> • Covered terrace • Open terrace • Exterior lights • Tennis court • Automatic watering system • Fruit trees • Palm trees • Play Ground • Stone walls • Electric gate • Outdoor kitchen • BBQ/grill • Padle tennis • Private garden • Communal Garden 	<ul style="list-style-type: none"> • Central electric heating • Floor heating • Floor heating bathrooms 	<ul style="list-style-type: none"> • Outdoor jacuzzi • Built in wardrobes • Alarm • Reinforced door • Double glazed windows • Satellite TV • Security guard • Storage room • Laundry room • Lift • Internet • Concierge 	energy house Image type unknown https://www.iberiaproperty.com/assets/imag

"OUR EXPERIENCE IS YOUR GUARANTEE"