



REF: # 13289

ALICANTE (CAMPELLO)



INFO

PRICE: 229.000 €

PROPERTY TYPE: Apartment

CITY: Alicante (Campello)

BEDROOMS: 2

Bathrooms: 1

Build (m2): 65

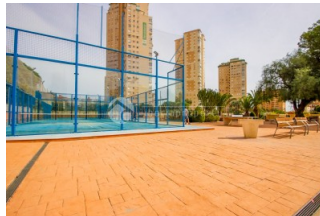
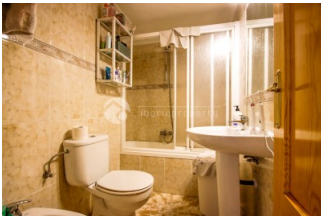
Plot (m2): -

Terrace (m2): 10

Year: 1985

Floor: 1

Old price -



DESCRIPTION

Enjoy life by the sea in this bright apartment located in a well-established residential complex in El Campello, just 50 meters from the beach. The complex offers year-round amenities for the whole family. Highlights Unbeatable location: second line, 50 m from the beach. Onsite parking: several parking areas within the complex — you'll always find a spot. Two large communal pools. Restaurant open all year within the complex. Pádel and tennis courts, children's playground, and spacious green areas for relaxing. Close to all services: supermarkets, transport, shops, and restaurants. Layout Entrance hall Separate kitchen Living-dining room with covered terrace (perfect as an extra year-round living area) 2 bedrooms 1 bathroom Ideal for Those seeking a second home steps from the sand. Investors looking for strong holiday rental demand thanks to the location and amenities. Families who value sports and leisure facilities without leaving the complex. Notes: The complex operates year-round and offers excellent accessibility with parking inside the premises. If you'd like, I can add floor area, floor level, orientation, community fees, or highlight photos you share to tailor the ad even more.

ENERGETIC CERTIFIED



STYLE <ul style="list-style-type: none"> Mediterranean 	DISTANCE TO : <div>Beach : 50 m</div> <div>Airport: 10 Km</div> <div>Town center : 100 m</div>	ORIENTATION <div>East</div>	FURNITURE <ul style="list-style-type: none"> Furnished
PARKING <div>Garage no Cars : 1</div>	FLOORING <ul style="list-style-type: none"> Stone floors 	KITCHEN <ul style="list-style-type: none"> Closed kitchen Equipped kitchen 	GARDEN AND TERRACES <ul style="list-style-type: none"> Covered terrace Open terrace Exterior lights Tennis court Automatic watering system Fruit trees Palm trees Play Ground Landscaped Fenced Stone walls Outdoor kitchen BBQ/grill Padle tennis Communal Garden
HEATING <ul style="list-style-type: none"> Central electric heating 	EXTRA <ul style="list-style-type: none"> Built in wardrobes Reinforced door Satellite TV Lift Internet 	ENERGETIC CERTIFIED <div> <p>The image shows a vertical energy efficiency scale with seven horizontal bars labeled A through G. The bars are colored in a gradient from green at the top to red at the bottom. A vertical green bar on the right side of the scale is labeled 'IN PROGRESS'.</p> </div>	

"OUR EXPERIENCE IS YOUR GUARANTEE"