



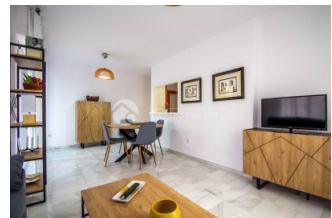
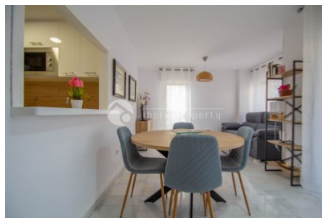
REF: # 12063

ALBIR (ALBIR CENTRO)



INFO

:	Check
PROPERTY TYPE:	Apartment
CITY:	Albir (Albir centro)
BEDROOMS:	2
Bathrooms:	2
Build (m2):	-
Plot (m2):	-
Terrace (m2):	-
Year:	-
Floor:	2
Beds	3




DESCRIPTION

This apartment has been renovated during the first months of 2024. It is 80m2 and has a 15m2 terrace which overlooks the big pool, community gardens and has views of the Sierra Helada. The apartment consists of 2 bedrooms, one with a double bed (150cm) and built-in wardrobe, and the other with a trundle bed (two 90cm beds) and double wardrobe, both with windows and natural light. There is a modern bathroom with a corner shower and another larger bathroom with a bathtub. The living-dining room is all one, it consists of a sofa bed, dining table and chairs, a TV cabinet that matches the living room table and shelving. Tastefully decorated and very comfortable. The kitchen, which is open to the dining room, is small but very practical. It consists of an oven, microwave, ceramic hob, refrigerator and freezer, toaster, coffee maker, and everything necessary for regular use; utensils, pots and pans, glasses, etc. The washing machine and the water boiler (electric) are located in a separate laundry room. It does not have air conditioning or WIFI at the moment, but there will be one in the near future. An underground parking

space is available in the same building. It is located in an ideal location to be close to everything without noise. It has the beach just a stone's throw away with the 'Paseo de las Estrellas' famous promenade, a shady park across the street, and plenty of bars and restaurants to choose from.



STYLE	VIEWS	DISTANCE TO :	FURNITURE
<ul style="list-style-type: none"> Modern Contemporary 	<ul style="list-style-type: none"> Panoramic views Mountain views 	Airport: 40 Km	<ul style="list-style-type: none"> Furnished
PARKING	KITCHEN	GARDEN AND TERRACES	ENERGETIC CERTIFIED
Garage no Cars : 1	<ul style="list-style-type: none"> Open kitchen Equipped kitchen 	<ul style="list-style-type: none"> Covered terrace Communal Garden 	 <p>The image shows a vertical energy efficiency scale with seven horizontal bars labeled A through G. The bars are colored in a gradient from dark green at the top to red at the bottom. A vertical green bar on the right side of the scale is labeled 'IN PROGRESS' vertically.</p>

"OUR EXPERIENCE IS YOUR GUARANTEE"