



REF: # 11382

TORREVIEJA



INFO

PRICE: 370.000 €

PROPERTY TYPE: Apartment

CITY: Torrevieja

BEDROOMS: 3

Bathrooms: 2

Build (m2): 82

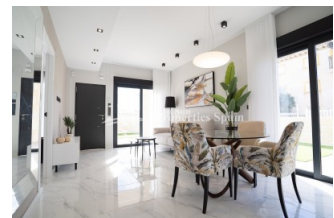
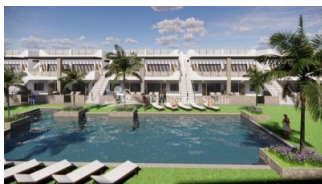
Plot (m2): 170

Terrace (m2): 18

Year: -

Floor: -

Old price -




DESCRIPTION

WONDERFUL NEW BUILD RESIDENTIAL COMPLEX OF APARTMENTS, GROUND FLOOR, IN PUNTA PRIMA, ORIHUELA COSTA only a few meters from the centre. This new ground floor 82m2 apartment consists of 3 bedrooms, 2 bathrooms a 18m2 terrace, parking and a large 170m2 private garden. The complex will offer nice green areas with a playground for children, a gym and two communal pools. It is located just a few meters from the centre of Punta Prima where you will find all the amenities you may need; nice restaurants, cafes, supermarkets, pharmacies and more. Punta Prima is located just 5 km from Torrevieja and has a good health infrastructure and a plenty of services available throughout the year. Just 10 km away we can find the golf courses of Villamartín, Campoamor, Las Ramblas, Las Colinas and Lo Romero, as well as the commercial centres of La Zenia and Habaneras. Nearest Airports: Alicante Airport 45mins drive (70km) and Murcia (Corvera) 42 mins (58km).

ENERGETIC CERTIFIED



STYLE	VIEWS	AIRCONDITIONING	DISTANCE TO :
<ul style="list-style-type: none"> Modern 	<ul style="list-style-type: none"> Panoramic views 	<ul style="list-style-type: none"> Central airconditioning 	Beach : 3 Km Airport: 60 Km
FURNITURE	PARKING	MAIN LIVING AREA	KITCHEN
<ul style="list-style-type: none"> Not furnished 	Parking no Cars: 1	<ul style="list-style-type: none"> Bathroom en-suite Gym 	<ul style="list-style-type: none"> Open kitchen
GARDEN AND TERRACES	EXTRA	ENERGETIC CERTIFIED	
<ul style="list-style-type: none"> Open terrace Play Ground Landscaped Fenced Private garden Communal Garden 	<ul style="list-style-type: none"> Built in wardrobes Reinforced door Double glazed windows Lift 	 <p>The image shows a vertical energy efficiency scale with seven horizontal bars labeled A through G. Bar A is dark green, B is green, C is light green, D is yellow, E is orange-yellow, F is orange, and G is red. To the right of these bars is a vertical green bar with the text 'IN PROGRESS' written vertically inside it.</p>	

"OUR EXPERIENCE IS YOUR GUARANTEE"