



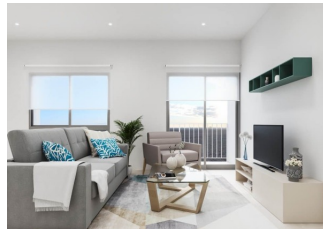
REF: # 11055

TORRE PACHECO (CENTRO)



INFO

PRICE:	174.000 €
PROPERTY TYPE:	Apartment
CITY:	Torre Pacheco (Centro)
BEDROOMS:	3
Bathrooms:	2
Build (m2):	106
Plot (m2):	-
Terrace (m2):	-
Year:	-
Floor:	-
Old price	-




DESCRIPTION

FANTASTIC NEW BUILD APARTMENT IN TORRE-PACHECO, MURCIA - with communal pool. This 106m2 ground floor apartment consists of 3 bedrooms, 2 bathrooms, open kitchen / dining area, private solarium, storage room and underground parking. The complex is built over 3 floors and has a lovely communal pool, located only minutes away are supermarkets, pharmacies, banks, schools, bars, restaurants and the beach. Torre Pacheco is a large town set just off the AP7 heading south and is an inland setting. It is only 5 minutes from San Javier Airport (Murcia) and about 70 minutes from Alicante Airport. The train station connects the town to Cartagena and Murcia where you can spend the day exploring and enjoying the lovely roman architecture and the influence of the Moors who governed these cities many years ago. The trains go to Madrid daily from here. The golf courses of La Serena, Roda, Mar Menor and La Torre are nearby and are in top condition. The street market is held on Saturday mornings and is a large market selling

everything from vegetables and fruit, to shoes and clothing to toys and gizmos and gadgets. The AP-7 highway also gives you easy access to other regions nearby such as Pilar de la Horadada, San Pedro del Pinatar, Orihuela Costa, Torrevieja, Alicante, etc.



STYLE	VIEWS	AIRCONDITIONING	DISTANCE TO :
<ul style="list-style-type: none"> Modern 	<ul style="list-style-type: none"> Panoramic views 	<ul style="list-style-type: none"> Central airconditioning 	Beach : 9 Km Airport: 20 Km
FURNITURE	PARKING	FLOORING	KITCHEN
<ul style="list-style-type: none"> Not furnished 	Garage no Cars : 1	<ul style="list-style-type: none"> Tile floors Stone floors 	<ul style="list-style-type: none"> Open kitchen
GARDEN AND TERRACES	EXTRA	ENERGETIC CERTIFIED	
<ul style="list-style-type: none"> Open terrace 	<ul style="list-style-type: none"> Built in wardrobes Reinforced door Double glazed windows Storage room 	 <p>The image shows a vertical energy efficiency scale with seven horizontal bars labeled A through G. The bars are colored in a gradient from green at the top to red at the bottom. A vertical green bar on the right side of the scale is labeled 'IN PROGRESS' and extends up to the level of bar C.</p>	

"OUR EXPERIENCE IS YOUR GUARANTEE"