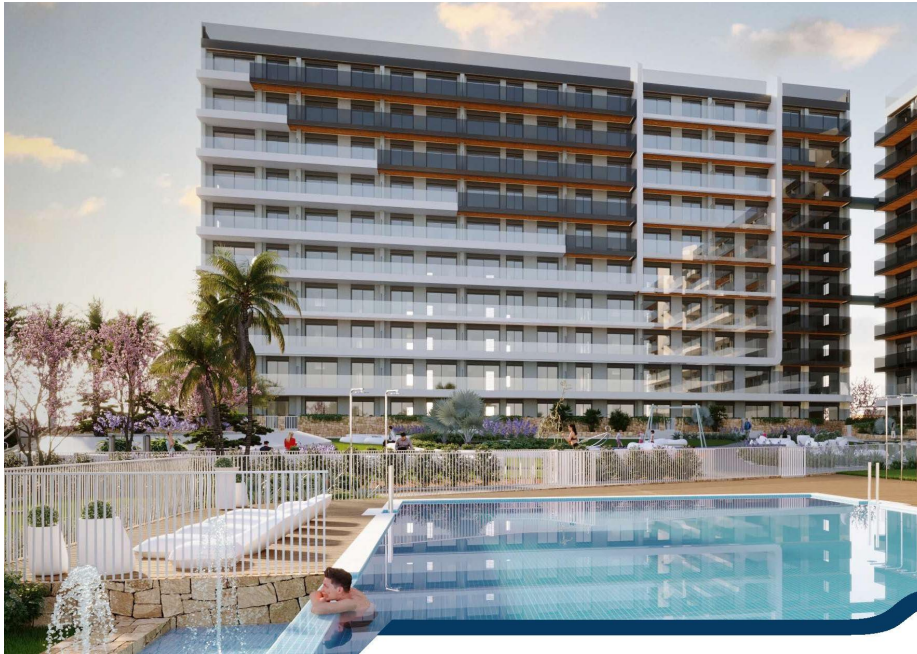




REF: # 10983

TORREVIEJA (PUNTA PRIMA)



INFO

PRICE:	364.000 €
PROPERTY TYPE:	Apartment
CITY:	Torrevieja (Punta Prima)
BEDROOMS:	2
Bathrooms:	2
Build (m2):	64
Plot (m2):	-
Terrace (m2):	17
Year:	
Floor:	1
Old price	-

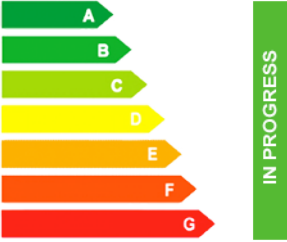


DESCRIPTION

NEW BUILD RESIDENTIAL COMPLEX IN PUNTA PRIMA New Build residential complex of 220 apartments in Punta Prima, Torrevieja. Apartments with 2 and 3 bedrooms and 2 bathrooms, open plan kitchen with living room, fitted wardrobes, all of them with large terraces. Ground floor apartments with garden and penthouses with solarium. All homes are delivered with an underground parking space. The residential has garden areas with swimming pools and paddle tennis court. Children can enjoy their own children's pool, as well as a children's play area. Punta Prima, located just 5 km from Torrevieja, is characterized by good communication and health infrastructures, the proximity to Alicante airport, and the number of services open throughout the year. Just 10 km away we can find the golf courses of Villamartín, Campoamor, Las Ramblas, Las Colinas and Lo Romero, as well as the commercial centres of La Zenia and Habaneras.

ENERGETIC CERTIFIED



STYLE	VIEWS	AIRCONDITIONING	DISTANCE TO :
<ul style="list-style-type: none"> Modern 	<ul style="list-style-type: none"> Panoramic views 	<ul style="list-style-type: none"> Central airconditioning 	Beach : 50 m Airport: 60 Km Town center : 6 Km
FURNITURE	PARKING	MAIN LIVING AREA	FLOORING
<ul style="list-style-type: none"> Not furnished 	Parking no Cars: 1	<ul style="list-style-type: none"> Gym 	<ul style="list-style-type: none"> Tile floors Stone floors
KITCHEN	GARDEN AND TERRACES	EXTRA	ENERGETIC CERTIFIED
<ul style="list-style-type: none"> Open kitchen 	<ul style="list-style-type: none"> Open terrace Fenced Communal Garden 	<ul style="list-style-type: none"> Reinforced door Double glazed windows Lift 	 <p>The image shows a vertical energy efficiency scale with seven horizontal bars labeled A through G. Bar A is dark green, B is green, C is light green, D is yellow, E is orange-yellow, F is orange, and G is red. To the right of these bars is a vertical green bar with the text 'IN PROGRESS' written vertically inside it.</p>

"OUR EXPERIENCE IS YOUR GUARANTEE"