



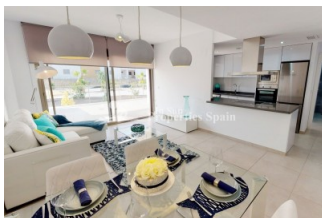
REF: # 10482

ORIHUELA COSTA (VILLAMARTIN AREA)



INFO

PRICE:	226.000 €
PROPERTY TYPE:	Apartment
CITY:	Orihuela Costa (Villamartin Area)
BEDROOMS:	2
Bathrooms:	2
Build (m2):	92
Plot (m2):	-
Terrace (m2):	20
Year:	
Floor:	-
Old price	-

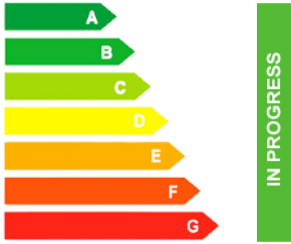


DESCRIPTION

NEW BUILD MODERN APARTMENTS IN VILLAMARTIN "RESIDENCIAL CILANTRO" with lovely communal gardens and pool, only 3km from the beach. This 71m2 2 bed, 2 bath apartment has an open plan kitchen lounge area and a 20m2 terrace. The apartment comes with; kitchen appliances, complete installation of ducted air conditioning, bathrooms with vanity units/shower screens/ LEDs, parking space and storage room included!!! There is a beautiful communal central garden with swimming pool. This new Residencial Cilantro is being built in a privileged place. All necessary facilities are available in the vicinity: 4 championship golf courses (Villamartin, Las Ramblas, Las Colinas & Campoamor) beautiful sandy beaches, La Zenia Boulevard and more including the Airports of Alicante 71km drive away and Murcia (Corvera) 55km.

ENERGETIC CERTIFIED



STYLE <ul style="list-style-type: none"> Modern Contemporary 	VIEWS <ul style="list-style-type: none"> Panoramic views 	AIRCONDITIONING <ul style="list-style-type: none"> Central airconditioning 	DISTANCE TO : <div>Beach : 3 Km</div> <div>Airport: 50 Km</div> <div>Town center : 1 Km</div>
FURNITURE <ul style="list-style-type: none"> Not furnished 	PARKING <div>Garage no Cars : 1</div>	FLOORING <ul style="list-style-type: none"> Tile floors Stone floors 	KITCHEN <ul style="list-style-type: none"> Open kitchen Equipped kitchen
GARDEN AND TERRACES <ul style="list-style-type: none"> Covered terrace Open terrace Play Ground Landscaped Fenced 	EXTRA <ul style="list-style-type: none"> Built in wardrobes Reinforced door Double glazed windows Laundry room Lift 	ENERGETIC CERTIFIED  <p>The image shows a vertical energy efficiency scale with seven horizontal bars labeled A through G. The bars are colored in a gradient from dark green at the top to red at the bottom. A vertical green bar on the right side of the scale is labeled 'IN PROGRESS'.</p>	

"OUR EXPERIENCE IS YOUR GUARANTEE"